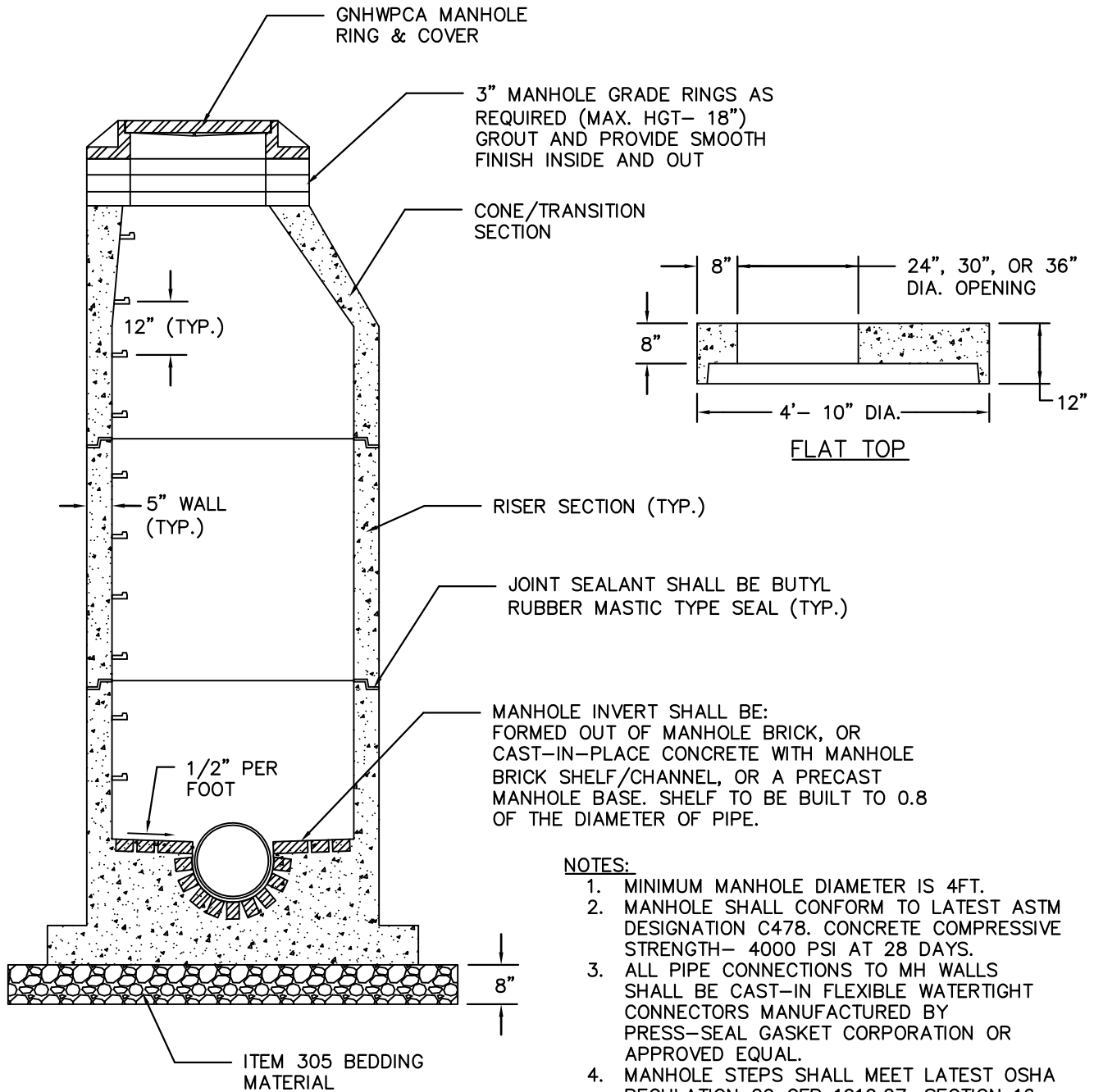


# GREATER NEW HAVEN WATER POLLUTION CONTROL AUTHORITY CONSTRUCTION DETAILS



**NOTES:**

1. MINIMUM MANHOLE DIAMETER IS 4FT.
2. MANHOLE SHALL CONFORM TO LATEST ASTM DESIGNATION C478. CONCRETE COMPRESSIVE STRENGTH- 4000 PSI AT 28 DAYS.
3. ALL PIPE CONNECTIONS TO MH WALLS SHALL BE CAST-IN FLEXIBLE WATERTIGHT CONNECTORS MANUFACTURED BY PRESS-SEAL GASKET CORPORATION OR APPROVED EQUAL.
4. MANHOLE STEPS SHALL MEET LATEST OSHA REGULATION 29 CFR 1910.27, SECTION 16 OF ASTM SPECIFICATION C478 AND SECTION 10 ASTM SPECIFICATION C497.
5. WHEN SPECIFIED MANHOLES SHALL BE COATED WITH BAY OIL, "EBONY".
6. MH BRICK (ASTM C32) SHALL BE GRADE MS OR MM.

REVISIONS	
NO.	DATE
1	JUNE 2008
2	DEC. 1, 2008
3	JAN. 7, 2010

PRECAST SANITARY SEWER MANHOLE  
NTS