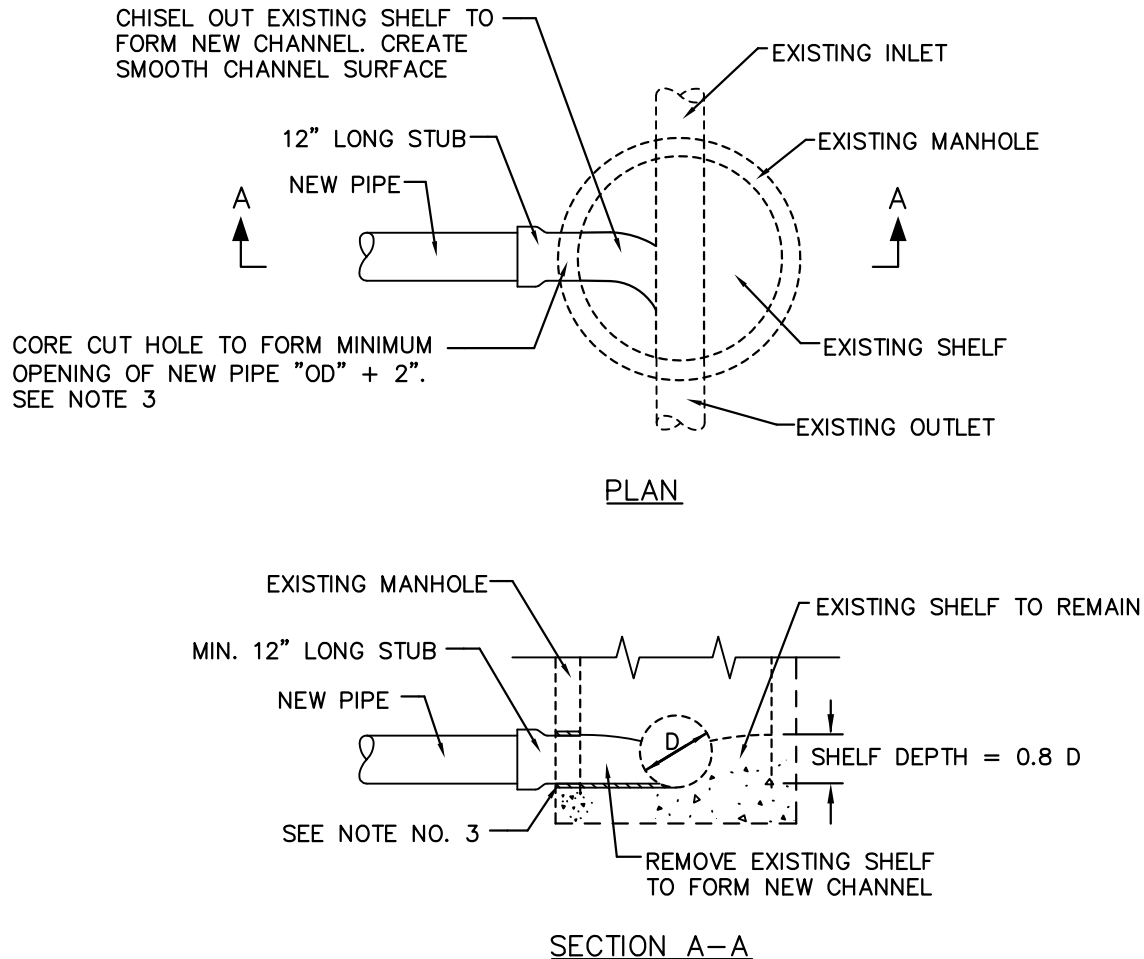


GREATER NEW HAVEN WATER POLLUTION CONTROL AUTHORITY CONSTRUCTION DETAILS



NOTES:

1. INVERT ELEVATION OF 12" LONG STUB AT THE INSIDE FACE OF MANHOLE TO BE 1 1/4" (MIN.) HIGHER THAN EXISTING OUTLET INVERT ELEVATION.
2. THE CORE CUT HOLE SHALL BE MADE WITH EQUIPMENT SPECIALLY DESIGNED TO CUT A SMOOTH HOLE WITHOUT SPALLING OR DAMAGE TO THE SHELL OR STRUCTURE.
3. PIPE CONNECTIONS THROUGH MH WALLS SHALL BE MADE W/ GROUTING RING (WS WATERSTOP) AS MANUFACTURED BY PRESS-SEAL GASKET CORPORATION OR APPROVED EQUAL AND NON-SHRINK GROUT.
4. MH INVERT SHALL BE FORMED OUT OF MH BRICK. SHELF TO BE BUILT TO 0.8 OF THE DIAMETER OF PIPE EXITING THE MH.

CONNECTION TO EXISTING MANHOLE NTS

REVISIONS	
NO.	DATE
1	JUNE 2008
2	DEC. 1, 2008
3	JAN. 7, 2010