

ARCH STREET PUMP STATION REHABILITATION PROJECT

#151 ARCH STREET, HAMDEN, CONNECTICUT
PROJECT No. SSF 2015-04

GNHWPCA BOARD OF DIRECTORS

STEPHEN A. MONGILLO	CHAIRMAN - NEW HAVEN
ALPHONSE E. PAOLILLO, JR.	VICE CHAIRMAN - HAMDEN
JOYCE ALTON	DIRECTOR - NEW HAVEN
MICHAEL FIMIANI	DIRECTOR - NEW HAVEN
CLAYTON WILLIAMS	DIRECTOR - NEW HAVEN
RUSSEL N. CYR	DIRECTOR - HAMDEN
JEFFREY D. GINZBERG, ESQ.	DIRECTOR - WOODBRIDGE
ANTHONY CRISCUOLO	DIRECTOR - EAST HAVEN
ROBERT NASTRI	DIRECTOR - EAST HAVEN

EXECUTIVE DIRECTOR
SIDNEY J. HOLBROOK

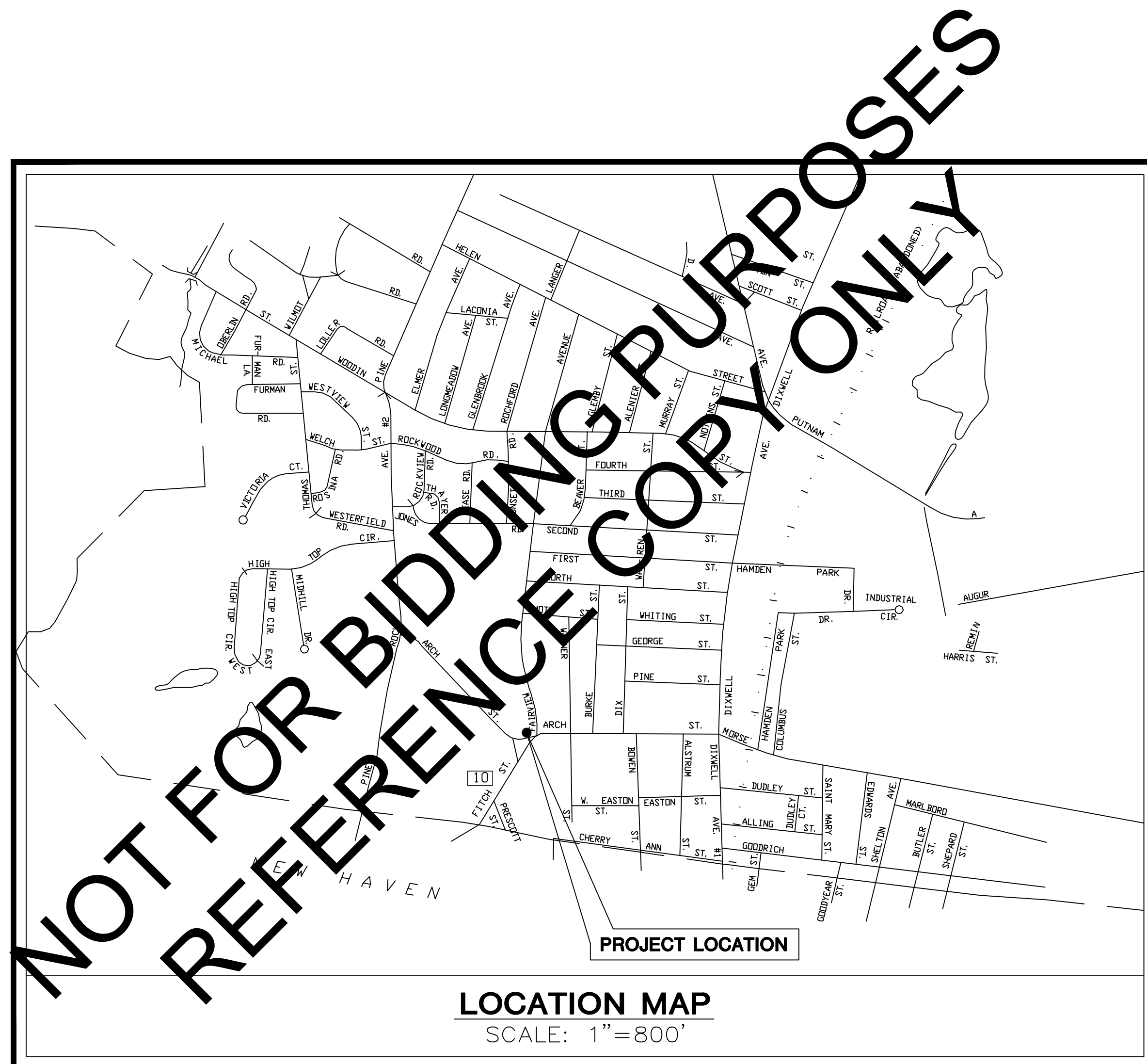
DIRECTOR OF FINANCE AND ADMINISTRATION
GABRIEL VARCA

DIRECTOR OF ENGINEERING
THOMAS V. SGROI, P.E.

DIRECTOR OF OPERATIONS
GARY ZRELAK

SHEET INDEX

SHEET NO.	TITLE
A101	EXISTING SITE PLAN w/PROPOSED IMPROVEMENTS & DETAILS
A102	EXISTING CONTROL ROOM LEVEL FLOOR PLAN
A103	EXISTING MOTOR ROOM LEVEL FLOOR PLAN
A104	EXISTING PUMP ROOM LEVEL FLOOR PLAN
A105	EXISTING PUMP STATION SECTION
A106	PROPOSED CONTROL ROOM LEVEL FLOOR PLAN
A107	PROPOSED MOTOR ROOM LEVEL FLOOR PLAN
A108	PROPOSED PUMP ROOM LEVEL FLOOR PLAN
A109	PROPOSED PUMP STATION SECTION
A110	PROPOSED PUMP STATION ELEVATIONS
A111	ELECTRICAL DEMO ELEVATIONS
A112	ELECTRICAL ONE-LINE DIAGRAM
A113	ELECTRICAL PLANS & DETAILS



FEBRUARY 2016

DRAWING PACKAGE

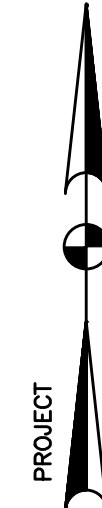
DATED: 2/16/16

CRISCUOLO
ENGINEERING LLC

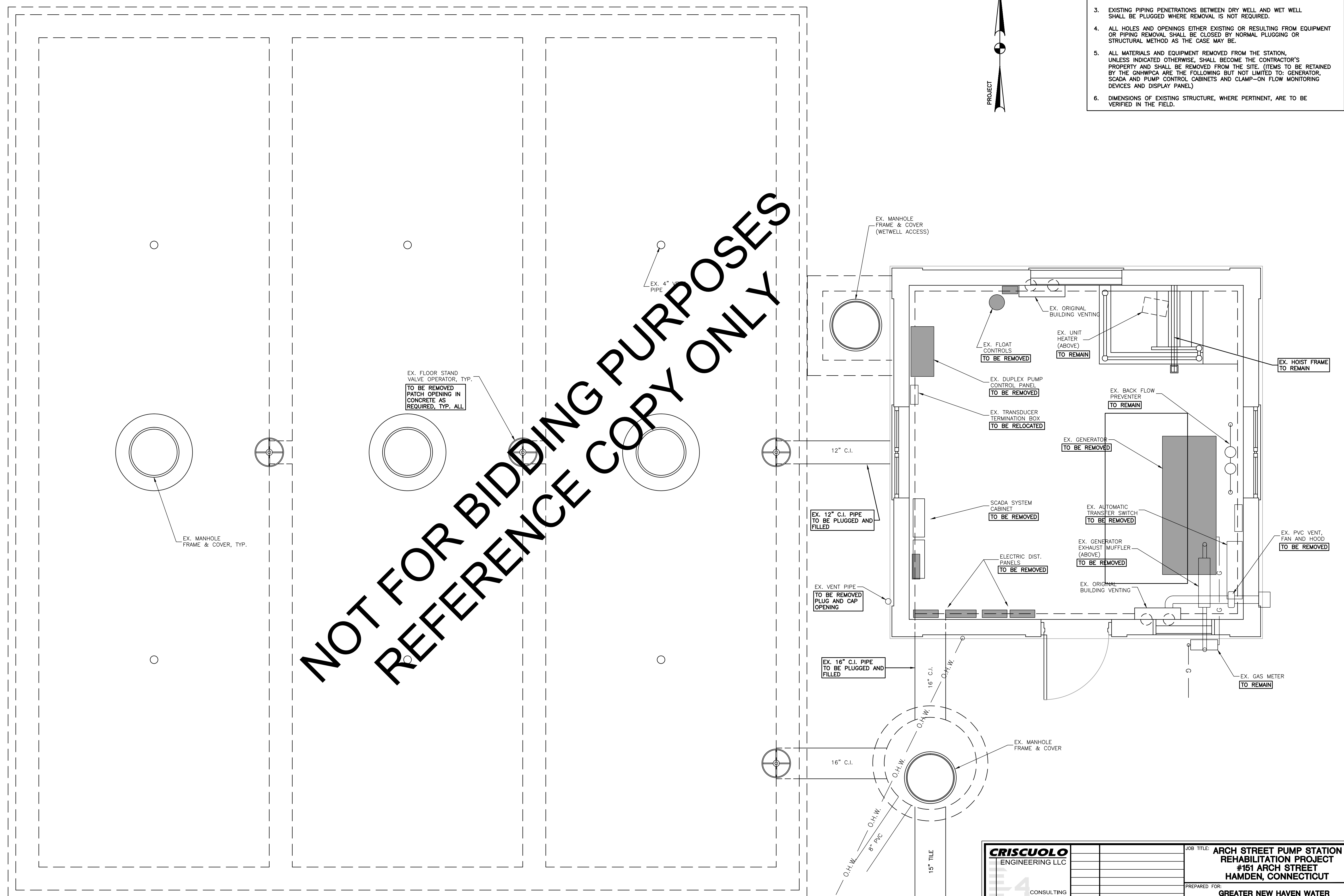
CONSULTING
ENGINEERS
LAND SURVEYORS

420 East Main Street
Building 1 - Suite 9
Branford, CT 06405
TEL: 203/481-0807
FAX: 203/488-5729

- NOTES:
1. SHADING NOTATION DESIGNATES EXISTING EQUIPMENT, ETC WHICH IS TO BE REMOVED.
 2. ALL EXISTING PIPING IS CAST IRON.
 3. EXISTING PIPING PENETRATIONS BETWEEN DRY WELL AND WET WELL SHALL BE PLUGGED WHERE REMOVAL IS NOT REQUIRED.
 4. ALL HOLES AND OPENINGS EITHER EXISTING OR RESULTING FROM EQUIPMENT OR PIPING REMOVAL SHALL BE CLOSED BY NORMAL PLUGGING OR STRUCTURAL METHOD AS THE CASE MAY BE.
 5. ALL MATERIALS AND EQUIPMENT REMOVED FROM THE STATION, UNLESS INDICATED OTHERWISE, SHALL BECOME THE CONTRACTOR'S PROPERTY AND SHALL BE REMOVED FROM THE SITE. (ITEMS TO BE RETAINED BY THE GNHPCA ARE THE FOLLOWING BUT NOT LIMITED TO: GENERATOR, SCADA AND PUMP CONTROL CABINETS AND CLAMP-ON FLOW MONITORING DEVICES AND DISPLAY PANEL)
 6. DIMENSIONS OF EXISTING STRUCTURE, WHERE PERTINENT, ARE TO BE VERIFIED IN THE FIELD.



NOT FOR BIDDING PURPOSES
REFERENCE COPY ONLY



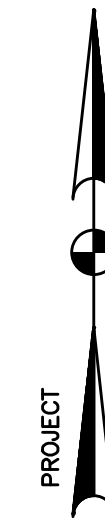
CONTROL ROOM LEVEL
SCALE: 1/2"=1'-0"
FINISHED FLOOR EL=37.10

CRISCUOLO ENGINEERING LLC CONSULTING ENGINEERS LAND SURVEYORS 420 East Main Street Building 1 - Suite 9 Branford, CT 06405 TEL: 203/481-0607 FAX: 203/488-5729	JOB TITLE: ARCH STREET PUMP STATION REHABILITATION PROJECT #151 ARCH STREET HAMDEN, CONNECTICUT		DRAWING NO.:	
	PREPARED FOR: GREATER NEW HAVEN WATER POLLUTION CONTROL AUTHORITY		EXISTING CONTROL ROOM LEVEL FLOOR PLAN A102	
	REV. DATE:	DESCRIPTION:		DATE:
	DATE:	2/16/16		SCALE:
SCALE:	1/2"=1'-0"	DRAWN:	J.M.P.	
CHECKED:	R.A.C.	CHECKED:	R.A.C.	
JOB:	2014.017			

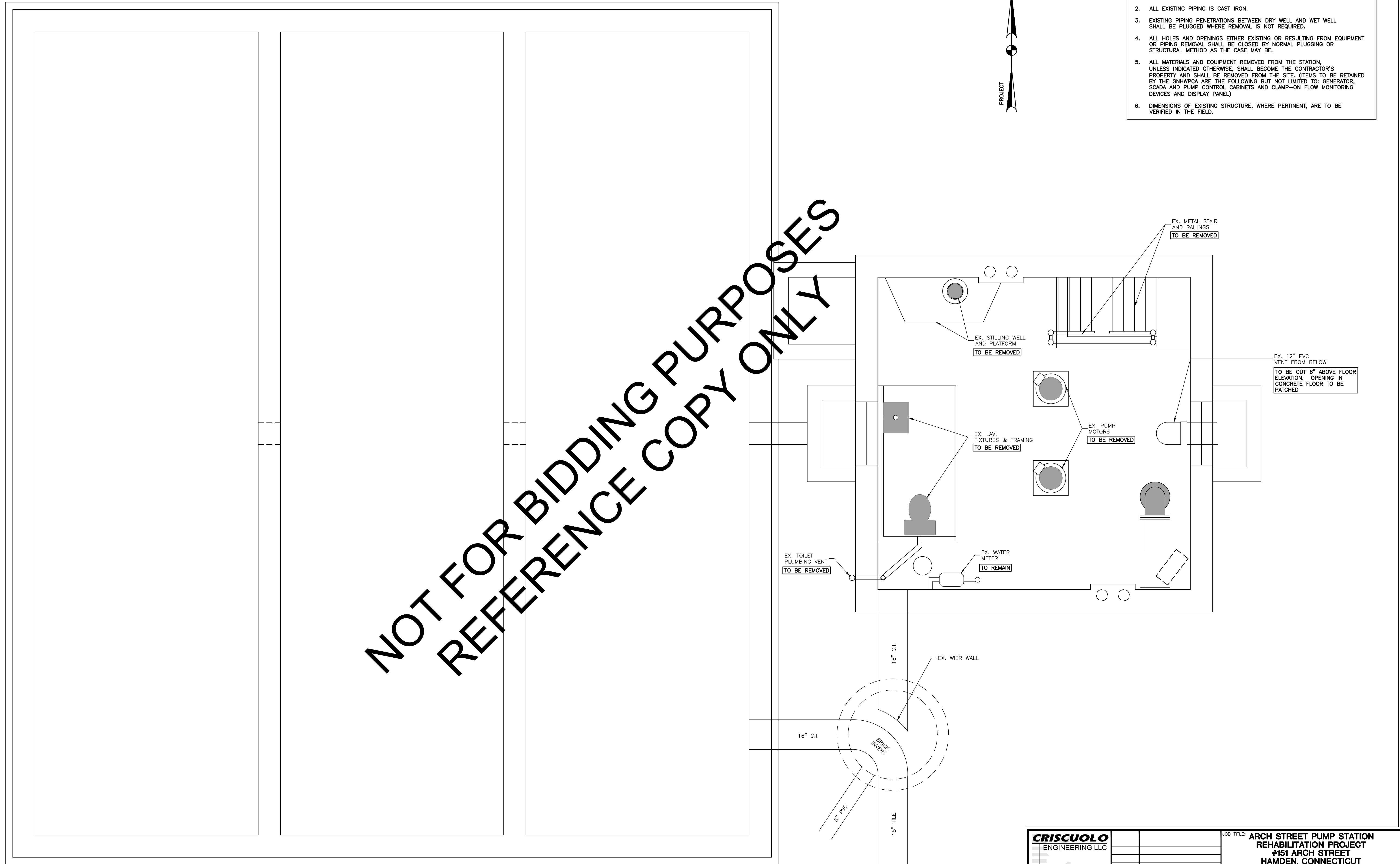
2:00:40:01:4:017:mpg:2014-017PLANS.dwg, 2/16/2016 12:07:31 PM

2/20/16 10:01:40:17:img2014-017PLANS.dwg, 2/18/2016 12:57:46 PM

NOT FOR BIDDING PURPOSES
REFERENCE COPY ONLY



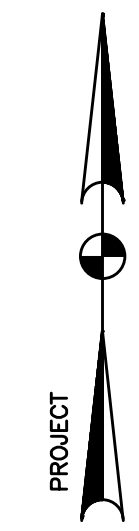
- NOTES:
1. SHADING NOTATION DESIGNATES EXISTING EQUIPMENT, ETC WHICH IS TO BE REMOVED.
 2. ALL EXISTING PIPING IS CAST IRON.
 3. EXISTING PIPING PENETRATIONS BETWEEN DRY WELL AND WET WELL SHALL BE PLUGGED WHERE REMOVAL IS NOT REQUIRED.
 4. ALL HOLES AND OPENINGS EITHER EXISTING OR RESULTING FROM EQUIPMENT OR PIPING REMOVAL SHALL BE CLOSED BY NORMAL PLUGGING OR STRUCTURAL METHOD AS THE CASE MAY BE.
 5. ALL MATERIALS AND EQUIPMENT REMOVED FROM THE STATION, UNLESS INDICATED OTHERWISE, SHALL BECOME THE CONTRACTOR'S PROPERTY AND SHALL BE REMOVED FROM THE SITE. (ITEMS TO BE RETAINED BY THE GNHWPCHA ARE THE FOLLOWING BUT NOT LIMITED TO: GENERATOR, SCADA AND PUMP CONTROL CABINETS AND CLAMP-ON FLOW MONITORING DEVICES AND DISPLAY PANEL.)
 6. DIMENSIONS OF EXISTING STRUCTURE, WHERE PERTINENT, ARE TO BE VERIFIED IN THE FIELD.



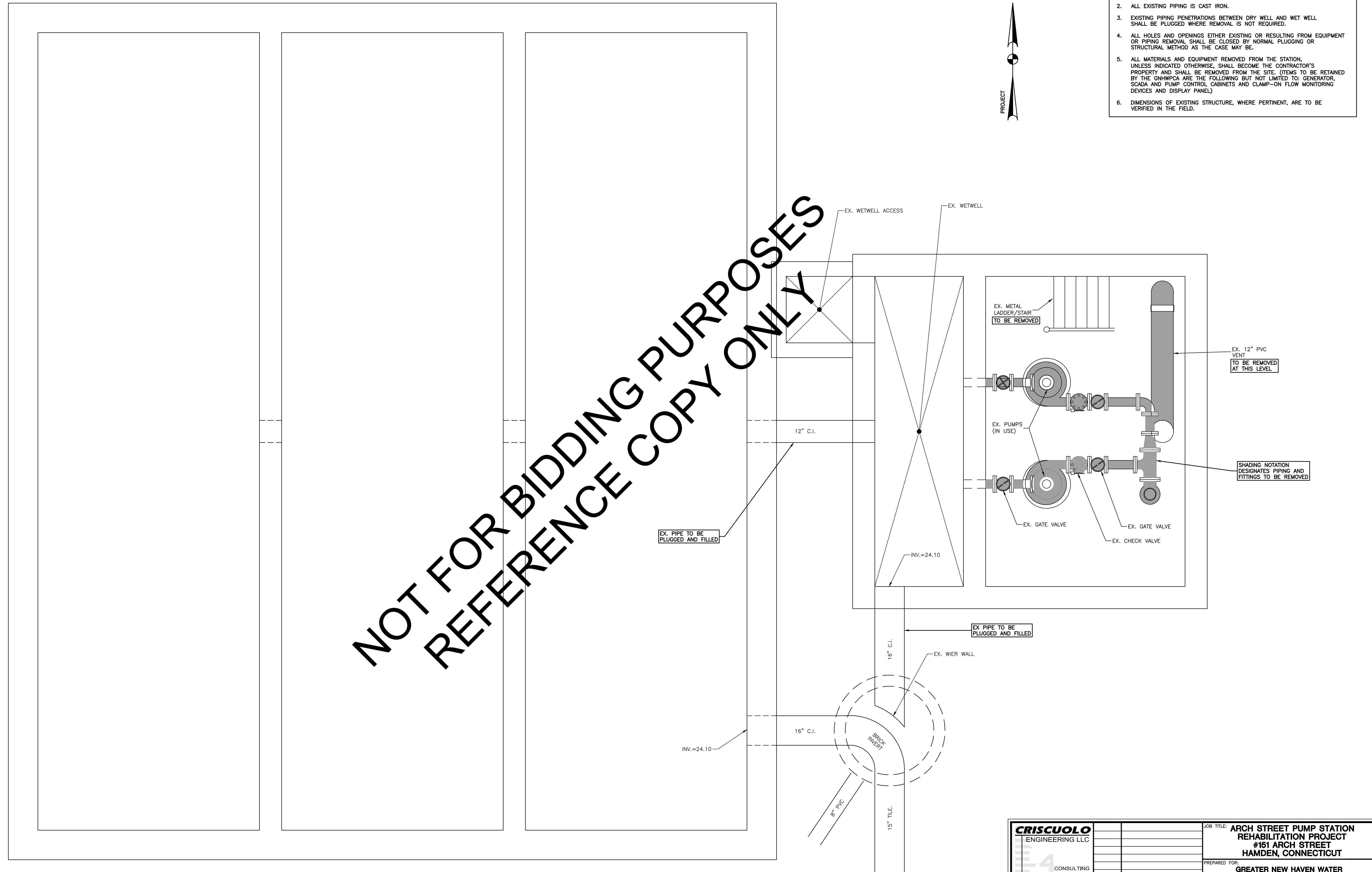
MOTOR ROOM LEVEL
SCALE: 1/2"=1'-0"
FINISHED FLOOR EL=28.10

CRISCUOLO ENGINEERING LLC CONSULTING ENGINEERS LAND SURVEYORS 420 East Main Street Building 1 - Suite 9 Branford, CT 06405 TEL: 203/481-0607 FAX: 203/488-5729	JOB TITLE: ARCH STREET PUMP STATION REHABILITATION PROJECT #151 ARCH STREET HAMDEN, CONNECTICUT	DRAWING NO.: A103
	PREPARED FOR: GREATER NEW HAVEN WATER POLLUTION CONTROL AUTHORITY	DRAWING TITLE: EXISTING MOTOR ROOM LEVEL FLOOR PLAN
	REV. DATE: DESCRIPTION: DATE: 2/16/16 SCALE: 1/2"=1'-0" DRAWN: J.M.P. CHECKED: R.A.C. JOB: 2014.017	CADD FILE: 2014-017PLANS
	CADD FILE: 2014-017PLANS	

- NOTES:
1. SHADING NOTATION DESIGNATES EXISTING EQUIPMENT, ETC WHICH IS TO BE REMOVED.
 2. ALL EXISTING PIPING IS CAST IRON.
 3. EXISTING PIPING PENETRATIONS BETWEEN DRY WELL AND WET WELL SHALL BE PLUGGED WHERE REMOVAL IS NOT REQUIRED.
 4. ALL HOLES AND OPENINGS EITHER EXISTING OR RESULTING FROM EQUIPMENT OR PIPING REMOVAL SHALL BE CLOSED BY NORMAL PLUGGING OR STRUCTURAL METHOD AS THE CASE MAY BE.
 5. ALL MATERIALS AND EQUIPMENT REMOVED FROM THE STATION, UNLESS INDICATED OTHERWISE, SHALL BECOME THE CONTRACTOR'S PROPERTY AND SHALL BE REMOVED FROM THE SITE. (ITEMS TO BE RETAINED BY THE GNHWPCHA ARE THE FOLLOWING BUT NOT LIMITED TO: GENERATOR, SCADA AND PUMP CONTROL CABINETS AND CLAMP-ON FLOW MONITORING DEVICES AND DISPLAY PANEL.)
 6. DIMENSIONS OF EXISTING STRUCTURE, WHERE PERTINENT, ARE TO BE VERIFIED IN THE FIELD.



NOT FOR BIDDING PURPOSES
REFERENCE COPY ONLY

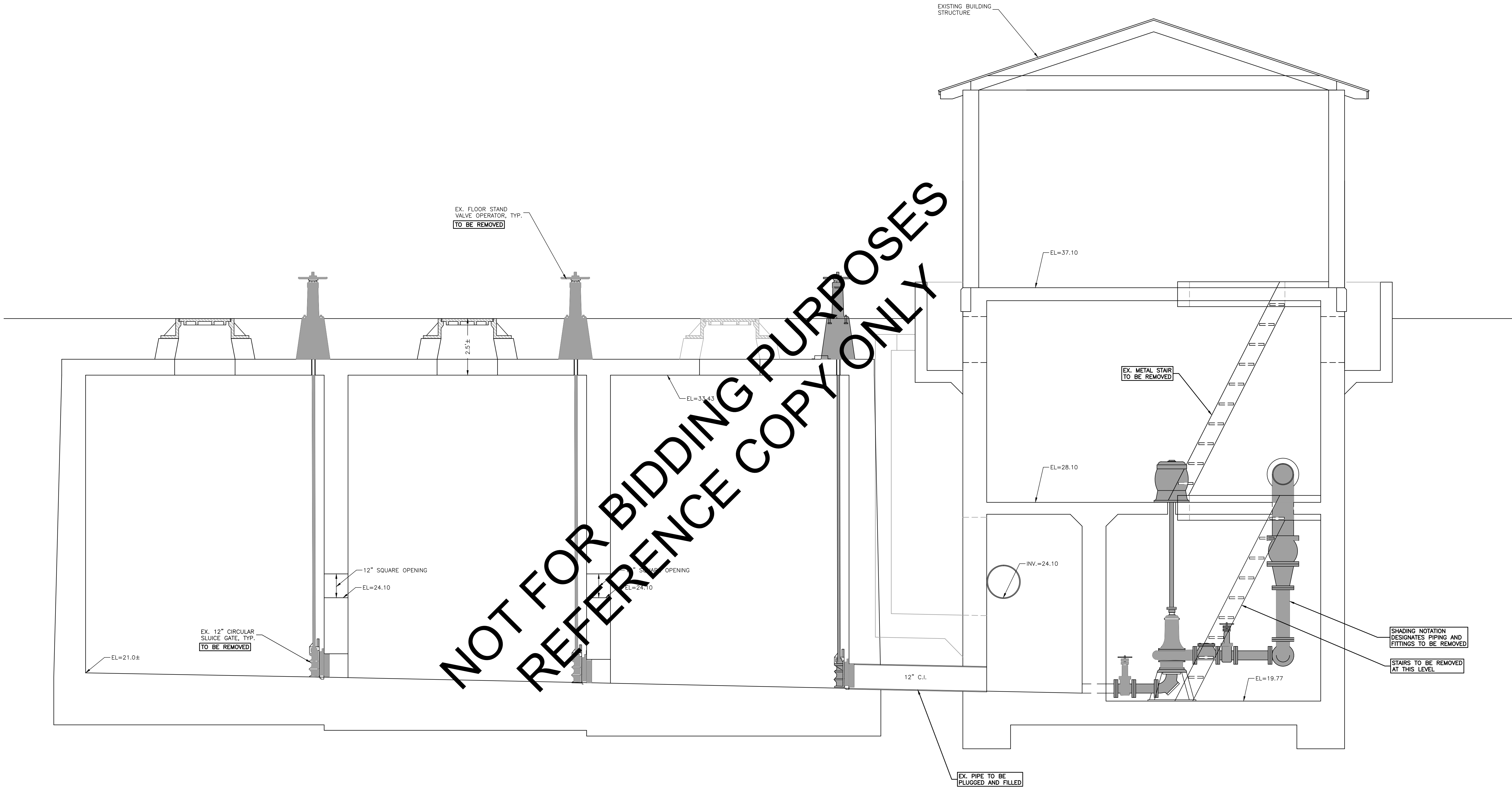


PUMP ROOM LEVEL
SCALE: 1/2"=1'-0"
FINISHED FLOOR EL=19.77

CRISCUOLO ENGINEERING LLC CONSULTING ENGINEERS LAND SURVEYORS 420 East Main Street Building 1 - Suite 9 Branford, CT 06405 TEL: 203/481-0607 FAX: 203/488-5729	REV. DATE:	DESCRIPTION:	DATE:	2/16/16	DRAWING TITLE:	DRAWING NO.:
	SCALE:	1/2"=1'-0"	DRAWN:	J.M.P.	EXISTING PUMP ROOM LEVEL FLOOR PLAN	A104
	CHECKED:	R.A.C.	JOB:	2014.017		
	JOB TITLE:				ARCH STREET PUMP STATION REHABILITATION PROJECT #151 ARCH STREET HAMDEN, CONNECTICUT	
PREPARED FOR:				GREATER NEW HAVEN WATER POLLUTION CONTROL AUTHORITY		

Z:\2014\2014-017\pmp2014-017\PLANS.dwg, 2/16/2016 12:08:15 PM

NOT FOR BIDDING PURPOSES
 REFERENCE COPY ONLY

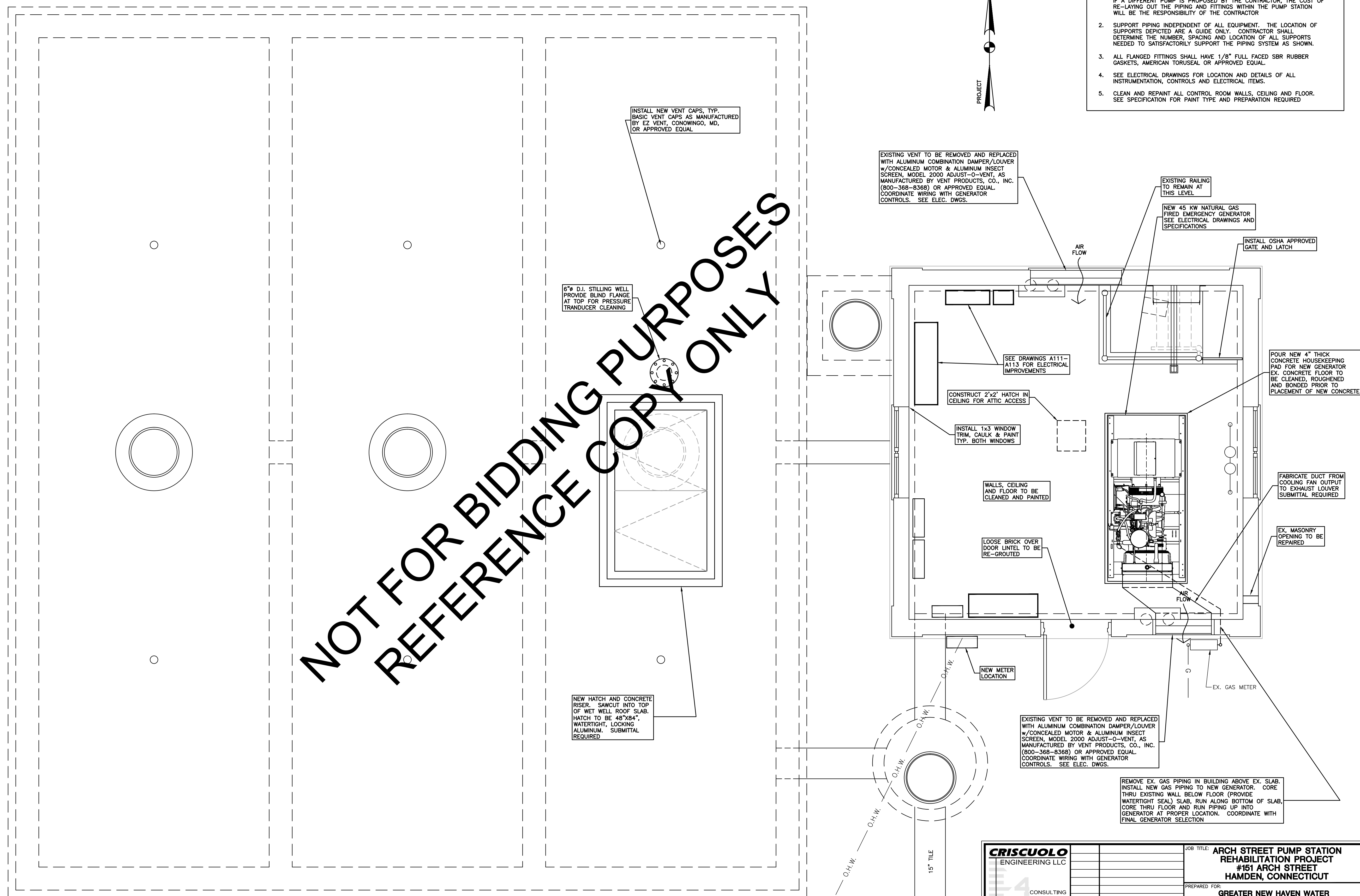
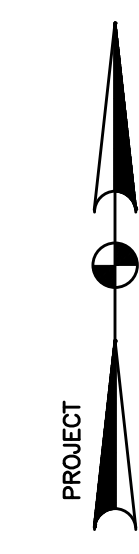


SECTION LOOKING NORTHWEST
 SCALE: 1/2"=1'-0"

2:00:14:001:4:07:7:mp2014:017:PLANS.dwg, 2/16/2016 12:28:35 PM

CRISCUOLO ENGINEERING LLC CONSULTING ENGINEERS LAND SURVEYORS 420 East Main Street Building 1 - Suite 9 Branford, CT 06405 TEL: 203/481-0607 FAX: 203/488-5729	DATE: 2/16/16 SCALE: 1/2"=1'-0" DRAWN: J.M.P. CHECKED: R.A.C. JOB: 2014.017	JOB TITLE: ARCH STREET PUMP STATION REHABILITATION PROJECT #151 ARCH STREET HAMDEN, CONNECTICUT PREPARED FOR: GREATER NEW HAVEN WATER POLLUTION CONTROL AUTHORITY DRAWING TITLE: EXISTING PUMP STATION SECTION DRAWING NO.: A105
	REV. DATE: DESCRIPTION: DATE: DRAWING TITLE:	SHADING NOTATION DESIGNATES PIPING AND FITTINGS TO BE REMOVED STAIRS TO BE REMOVED AT THIS LEVEL
	EX. PIPE TO BE PLUGGED AND FILLED	EX. METAL STAIR TO BE REMOVED
	EX. 12" C.I.	EX. 12" CIRCULAR SLUICE GATE, TYP. TO BE REMOVED

- GENERAL NOTES:**
- DIMENSIONS AND PIPING LAYOUT ARE BASED ON A VERTICAL, DRY-PIT, SUBMERSIBLE, NON-CLOG, NON-OVERLOADING PUMP AS MANUFACTURED BY HOMA PUMP TECHNOLOGY INC. WITH CUTTER SYSTEM. IF A DIFFERENT PUMP IS PROPOSED BY THE CONTRACTOR, THE COST OF RE-LAYING OUT THE PIPING AND FITTINGS WITHIN THE PUMP STATION WILL BE THE RESPONSIBILITY OF THE CONTRACTOR.
 - SUPPORT PIPING INDEPENDENT OF ALL EQUIPMENT. THE LOCATION OF SUPPORTS DEPICTED ARE A GUIDE ONLY. CONTRACTOR SHALL DETERMINE THE NUMBER, SPACING AND LOCATION OF ALL SUPPORTS NEEDED TO SATISFACTORILY SUPPORT THE PIPING SYSTEM AS SHOWN.
 - ALL FLANGED FITTINGS SHALL HAVE 1/8" FULL FACED SBR RUBBER GASKETS, AMERICAN TORUSEAL OR APPROVED EQUAL.
 - SEE ELECTRICAL DRAWINGS FOR LOCATION AND DETAILS OF ALL INSTRUMENTATION, CONTROLS AND ELECTRICAL ITEMS.
 - CLEAN AND REPAINT ALL CONTROL ROOM WALLS, CEILING AND FLOOR. SEE SPECIFICATION FOR PAINT TYPE AND PREPARATION REQUIRED.



NOT FOR BIDDING PURPOSES
REFERENCE COPY ONLY

INSTALL NEW VENT CAPS, TYP. BASIC VENT CAPS AS MANUFACTURED BY EZ VENT, CONOWINGO, MD, OR APPROVED EQUAL.

6" D.I. STILLING WELL PROVIDE BLIND FLANGE AT TOP FOR PRESSURE TRANSDUCER CLEANING

NEW HATCH AND CONCRETE RISER. SAWCUT INTO TOP OF WET WELL ROOF SLAB. HATCH TO BE 48"x84", WATERTIGHT, LOCKING ALUMINUM. SUBMITTAL REQUIRED.

EXISTING VENT TO BE REMOVED AND REPLACED WITH ALUMINUM COMBINATION DAMPER/LOUVER w/ CONCEALED MOTOR & ALUMINUM INSECT SCREEN, MODEL 2000 ADJUST-O-VENT, AS MANUFACTURED BY VENT PRODUCTS, CO., INC. (800-368-8368) OR APPROVED EQUAL. COORDINATE WIRING WITH GENERATOR CONTROLS. SEE ELEC. DWGS.

EXISTING RAILING TO REMAIN AT THIS LEVEL

NEW 45 KW NATURAL GAS FIRED EMERGENCY GENERATOR SEE ELECTRICAL DRAWINGS AND SPECIFICATIONS

INSTALL OSHA APPROVED GATE AND LATCH

POUR NEW 4" THICK CONCRETE HOUSEKEEPING PAD FOR NEW GENERATOR. EX. CONCRETE FLOOR TO BE CLEANED, ROUGHENED AND BONDED PRIOR TO PLACEMENT OF NEW CONCRETE.

FABRICATE DUCT FROM COOLING FAN OUTPUT TO EXHAUST LOUVER. SUBMITTAL REQUIRED.

EX. MASONRY OPENING TO BE REPAIRED

EXISTING VENT TO BE REMOVED AND REPLACED WITH ALUMINUM COMBINATION DAMPER/LOUVER w/ CONCEALED MOTOR & ALUMINUM INSECT SCREEN, MODEL 2000 ADJUST-O-VENT, AS MANUFACTURED BY VENT PRODUCTS, CO., INC. (800-368-8368) OR APPROVED EQUAL. COORDINATE WIRING WITH GENERATOR CONTROLS. SEE ELEC. DWGS.

REMOVE EX. GAS PIPING IN BUILDING ABOVE EX. SLAB. INSTALL NEW GAS PIPING TO NEW GENERATOR. CORE THRU EXISTING WALL BELOW FLOOR (PROVIDE WATERTIGHT SEAL) SLAB, RUN ALONG BOTTOM OF SLAB, CORE THRU FLOOR AND RUN PIPING UP INTO GENERATOR AT PROPER LOCATION. COORDINATE WITH FINAL GENERATOR SELECTION.

CONTROL ROOM LEVEL
SCALE: 1/2"=1'-0"
FINISHED FLOOR EL=37.10

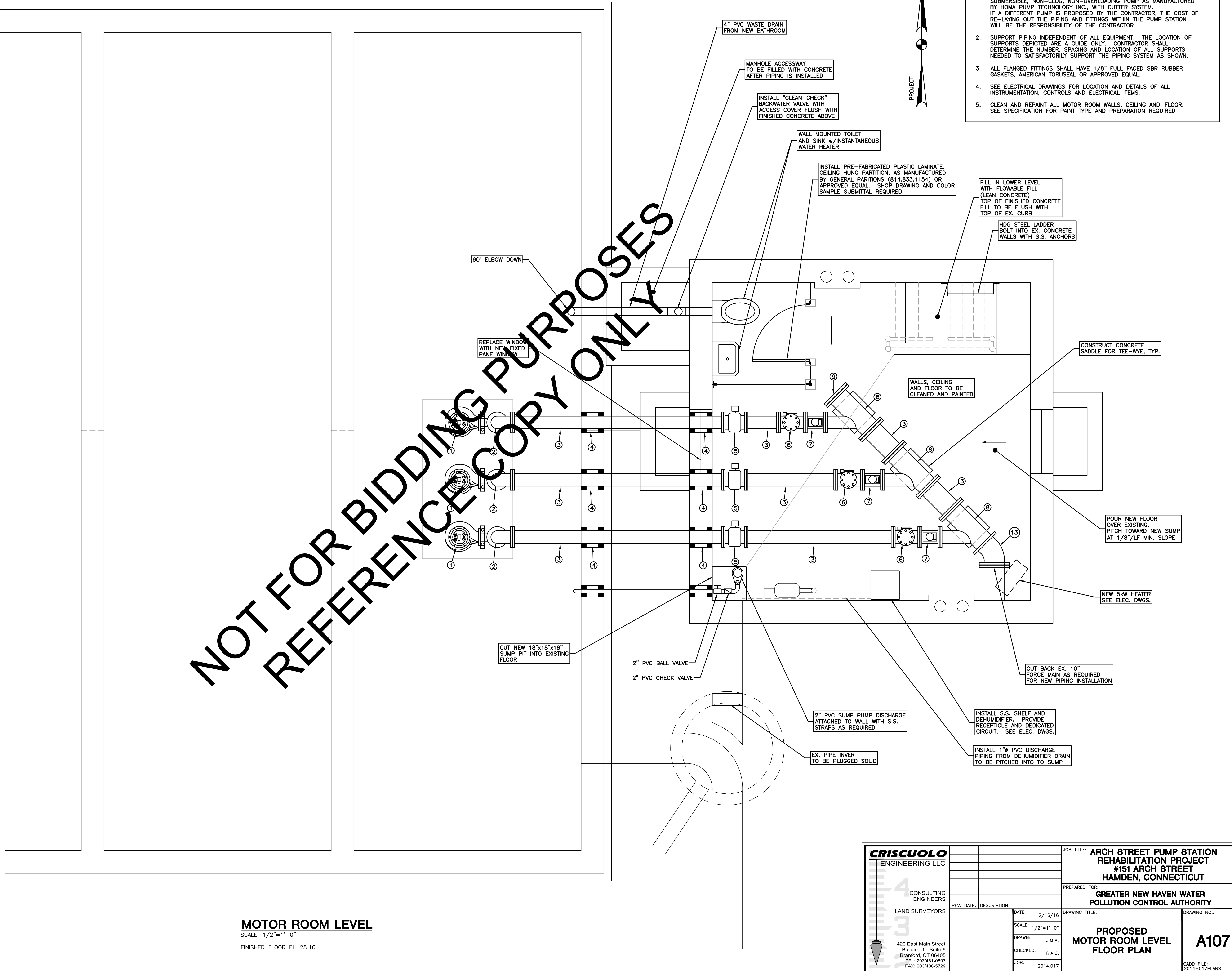
CRISCUOLO ENGINEERING LLC CONSULTING ENGINEERS LAND SURVEYORS 420 East Main Street Building 1 - Suite 9 Branford, CT 06405 TEL: 203/481-0907 FAX: 203/488-5729	JOB TITLE: ARCH STREET PUMP STATION REHABILITATION PROJECT #151 ARCH STREET HAMDEN, CONNECTICUT	DRAWING NO.: A106
	PREPARED FOR: GREATER NEW HAVEN WATER POLLUTION CONTROL AUTHORITY	DRAWING TITLE: PROPOSED CONTROL ROOM LEVEL FLOOR PLAN
REV. DATE: DESCRIPTION:	DATE: 2/16/16 SCALE: 1/2"=1'-0" DRAWN: J.M.P. CHECKED: R.A.C. JOB: 2014.017	CAD FILE: 2014-017PLANS

SANITARY SEWER PIPE & FITTINGS SCHEDULE

MARK	ITEM
①	NON-CLOG SUBMERSIBLE PUMP SEE SPECIFICATIONS
②	6" 90° BEND (FLG. x FLG.)
③	6" SPOOL PIECE (FLG. x FLG.)
④	CORE NEW WALL PENETRATION FOR NEW 6" PIPE AND PROVIDE 2-"LINK-SEAL" MODULAR SEALS w/STAINLESS STEEL HARDWARE & 6" SPOOL PIECE (FLG. x PLAIN END w/FLANGE ADAPTOR)
⑤	6" MAGNETIC FLOW METER
⑥	6" CHECK VALVE, KENNEDY VALVE 1106LW, OR APPROVED EQUAL (FLG. x FLG.)
⑦	6" PEF 100% PORT ECCENTRIC PLUG VALVE, DeZURIK MODEL PEF,4,FLCI, NBR,CR*GS-6A-H08 OR APPROVED EQUAL (FLG. x FLG.)
⑧	10"x10"x6" TEE-wye (FLG. x FLG.)
⑨	10" BLIND FLANGE
⑩	4" AUTOCOUPLING 90° BASE BEND
⑪	4"x6" INCREASER (FLG. x FLG.)
⑫	PRESSURE GAUGE, 0-30 PSI, 3" FACE, LIQUID FILLED, WITH GAUGE GUARD, BLOW OFF PORT AND ISOLATION VALVE
⑬	10" 45° BEND (FLG. x FLG.)

- GENERAL NOTES:**
- DIMENSIONS AND PIPING LAYOUT ARE BASED ON A VERTICAL, DRY-PIT, SUBMERSIBLE, NON-CLOG, NON-OVERLOADING PUMP AS MANUFACTURED BY HOMA PUMP TECHNOLOGY INC. WITH CUTTER SYSTEM. IF A DIFFERENT PUMP IS PROPOSED BY THE CONTRACTOR, THE COST OF RE-LAYING OUT THE PIPING AND FITTINGS WITHIN THE PUMP STATION WILL BE THE RESPONSIBILITY OF THE CONTRACTOR.
 - SUPPORT PIPING INDEPENDENT OF ALL EQUIPMENT. THE LOCATION OF SUPPORTS DEPICTED ARE A GUIDE ONLY. CONTRACTOR SHALL DETERMINE THE NUMBER, SPACING AND LOCATION OF ALL SUPPORTS NEEDED TO SATISFACTORILY SUPPORT THE PIPING SYSTEM AS SHOWN.
 - ALL FLANGED FITTINGS SHALL HAVE 1/8" FULL FACED SBR RUBBER GASKETS, AMERICAN TORUSEAL OR APPROVED EQUAL.
 - SEE ELECTRICAL DRAWINGS FOR LOCATION AND DETAILS OF ALL INSTRUMENTATION, CONTROLS AND ELECTRICAL ITEMS.
 - CLEAN AND REPAINT ALL MOTOR ROOM WALLS, CEILING AND FLOOR. SEE SPECIFICATION FOR PAINT TYPE AND PREPARATION REQUIRED.

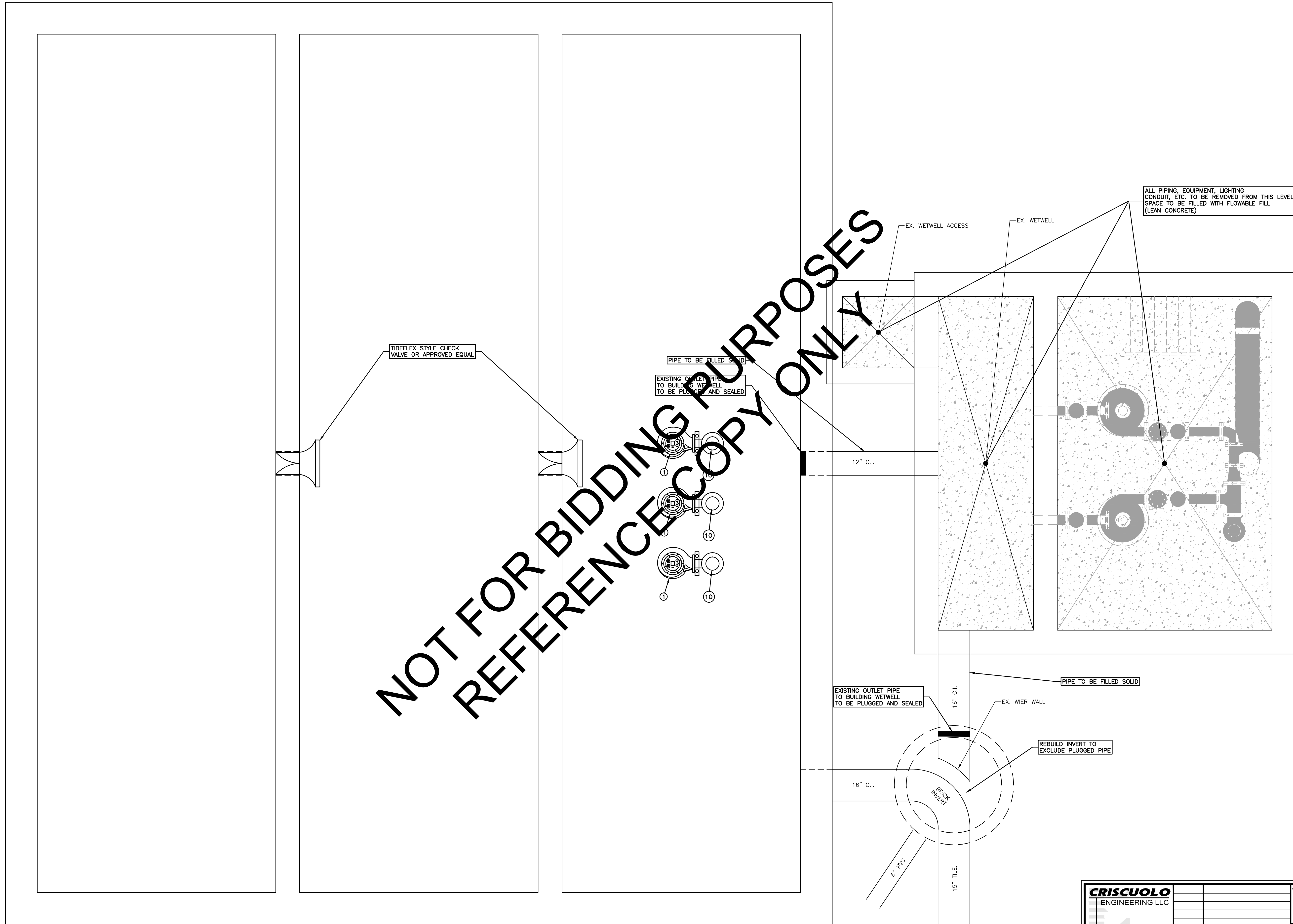
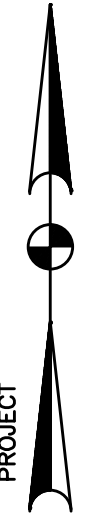
NOT FOR BIDDING PURPOSES
REFERENCE COPY ONLY



MOTOR ROOM LEVEL
SCALE: 1/2"=1'-0"
FINISHED FLOOR EL=28.10

CRISCUOLO ENGINEERING LLC CONSULTING ENGINEERS LAND SURVEYORS 420 East Main Street Building 1 - Suite 9 Branford, CT 06405 TEL: 203/481-0907 FAX: 203/488-5729	JOB TITLE: ARCH STREET PUMP STATION REHABILITATION PROJECT #151 ARCH STREET HAMDEN, CONNECTICUT	DRAWING NO.: A107
	PREPARED FOR: GREATER NEW HAVEN WATER POLLUTION CONTROL AUTHORITY	DRAWING TITLE: PROPOSED MOTOR ROOM LEVEL FLOOR PLAN
REV. DATE: DESCRIPTION:	DATE: 2/16/16 SCALE: 1/2"=1'-0" DRAWN: J.M.P. CHECKED: R.A.C. JOB: 2014.017	

Z:\2014\2014-017\mwp\2014-017PLANS.dwg, 2/16/2016 12:29:06 PM



NOT FOR BIDDING PURPOSES
REFERENCE COPY ONLY

PUMP ROOM LEVEL
SCALE: 1/2"=1'-0"
FINISHED FLOOR EL=19.77

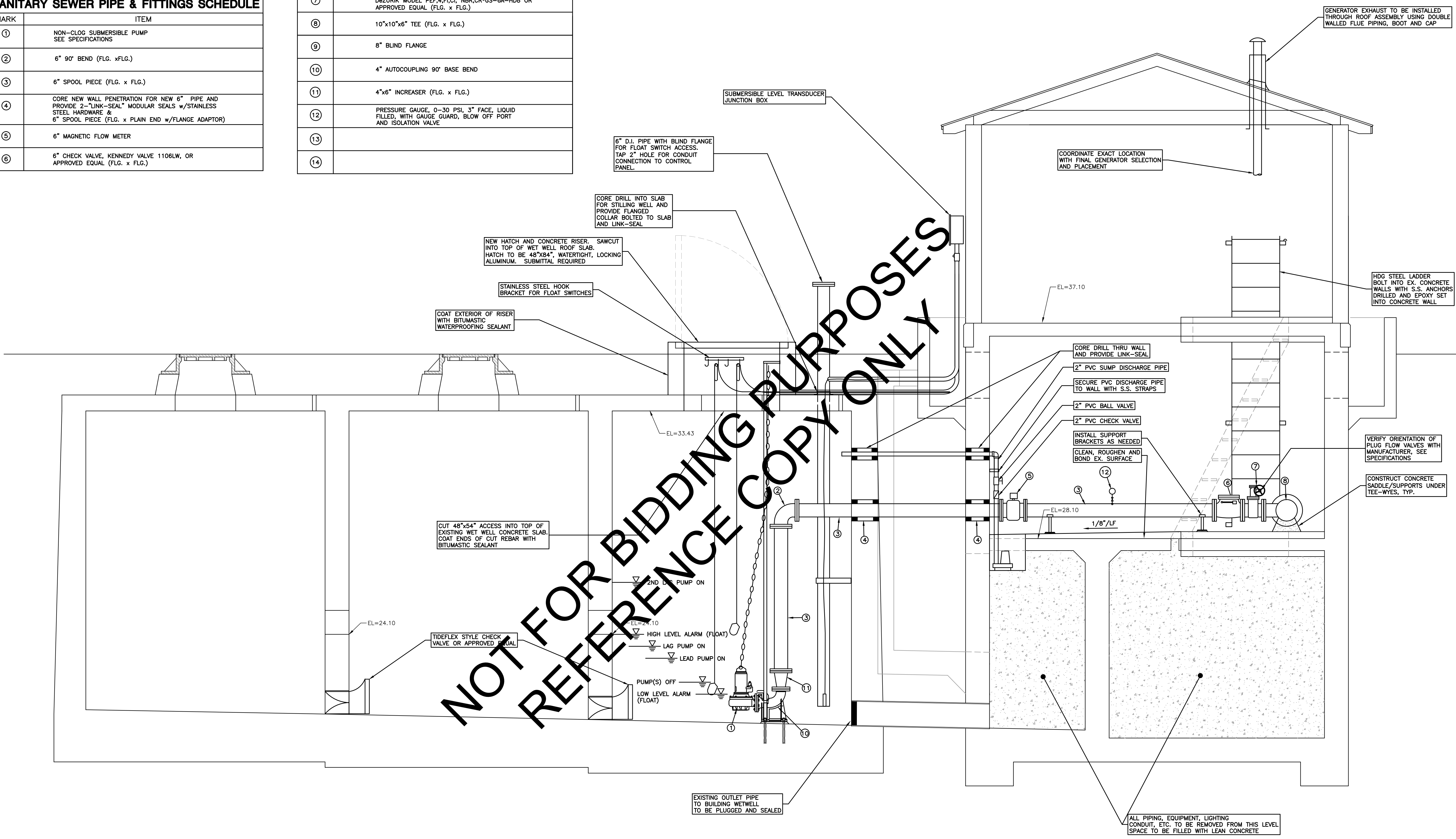
CRISCUOLO ENGINEERING LLC CONSULTING ENGINEERS LAND SURVEYORS 420 East Main Street Building 1 - Suite 9 Branford, CT 06405 TEL: 203/481-0607 FAX: 203/488-5729	REV. DATE:	DESCRIPTION:	DATE: 2/16/16	DRAWING TITLE:	JOB TITLE: ARCH STREET PUMP STATION REHABILITATION PROJECT #151 ARCH STREET HAMDEN, CONNECTICUT	
			SCALE: 1/2"=1'-0"		PREPARED FOR: GREATER NEW HAVEN WATER POLLUTION CONTROL AUTHORITY	
			DRAWN: J.M.P.			DRAWING NO.: A108
			CHECKED: R.A.C.			CADD FILE: 2014-017PLANS
			JOB: 2014.017			

2/20/16 01:40:17:mpj2014-017PLANS.dwg, 2/16/2016 12:59:20 PM

SANITARY SEWER PIPE & FITTINGS SCHEDULE

MARK	ITEM
①	NON-CLOG SUBMERSIBLE PUMP SEE SPECIFICATIONS
②	6" 90° BEND (FLG. x FLG.)
③	6" SPOOL PIECE (FLG. x FLG.)
④	CORE NEW WALL PENETRATION FOR NEW 6" PIPE AND PROVIDE 2-"LINK-SEAL" MODULAR SEALS w/STAINLESS STEEL HARDWARE & 6" SPOOL PIECE (FLG. x PLAIN END w/FLANGE ADAPTOR)
⑤	6" MAGNETIC FLOW METER
⑥	6" CHECK VALVE, KENNEDY VALVE 1106LW, OR APPROVED EQUAL (FLG. x FLG.)

⑦	6" PEF 100% PORT ECCENTRIC PLUG VALVE, DeZURIK MODEL PEF,4,FI,CI, NBR,CR*GS-6A-HD8 OR APPROVED EQUAL (FLG. x FLG.)
⑧	10"x10"x6" TEE (FLG. x FLG.)
⑨	8" BLIND FLANGE
⑩	4" AUTOCOUPLING 90° BASE BEND
⑪	4"x6" INCREASER (FLG. x FLG.)
⑫	PRESSURE GAUGE, 0-30 PSI, 3" FACE, LIQUID FILLED, WITH GAUGE GUARD, BLOW OFF PORT AND ISOLATION VALVE
⑬	
⑭	

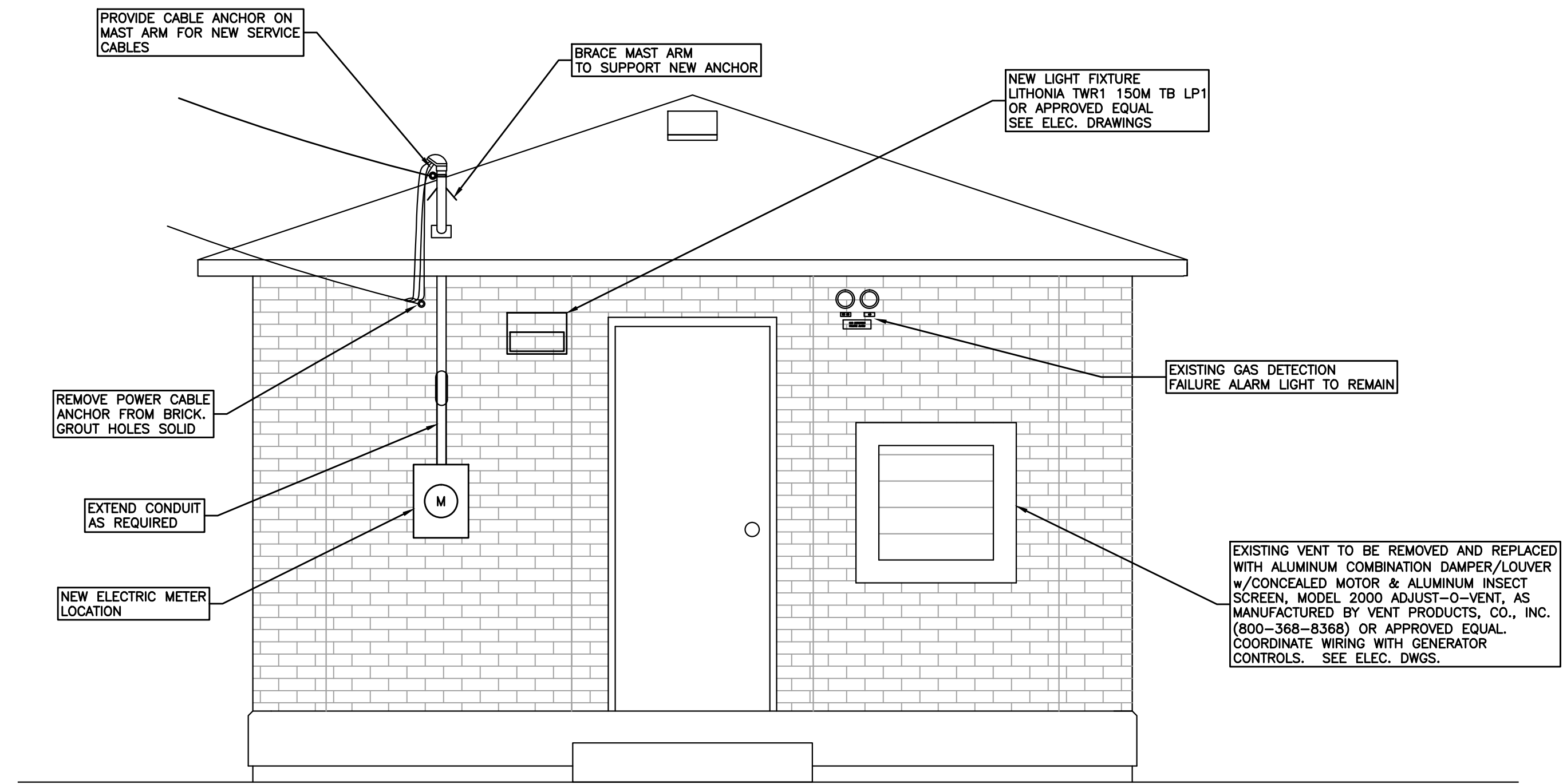


NOT FOR BIDDING PURPOSES
REFERENCE COPY ONLY

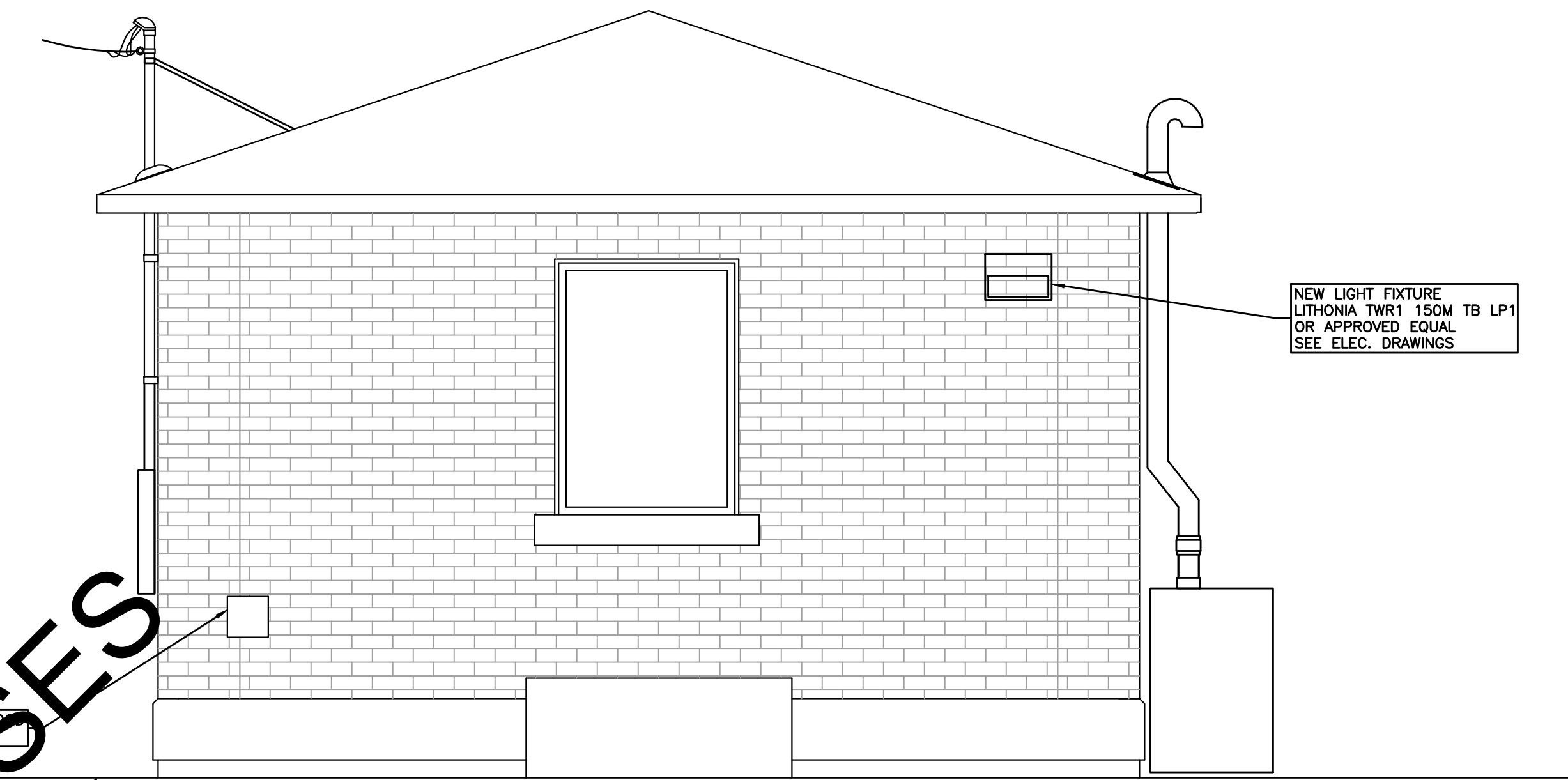
SECTION LOOKING NORTHWEST
SCALE: 1/2"=1'-0"

CRISCUOLO ENGINEERING LLC CONSULTING ENGINEERS LAND SURVEYORS 420 East Main Street Building 1 - Suite 9 Branford, CT 06405 TEL: 203/481-0607 FAX: 203/488-5729	JOB TITLE: ARCH STREET PUMP STATION REHABILITATION PROJECT #151 ARCH STREET HAMDEN, CONNECTICUT PREPARED FOR: GREATER NEW HAVEN WATER POLLUTION CONTROL AUTHORITY	
	REV. DATE: DESCRIPTION: DATE: 2/16/16 SCALE: 1/2"=1'-0" DRAWN: J.M.P. CHECKED: R.A.C. JOB: 2014.017	DRAWING TITLE: PROPOSED PUMP STATION SECTION DRAWING NO.: A109 CADD FILE: 2014-017PLANS

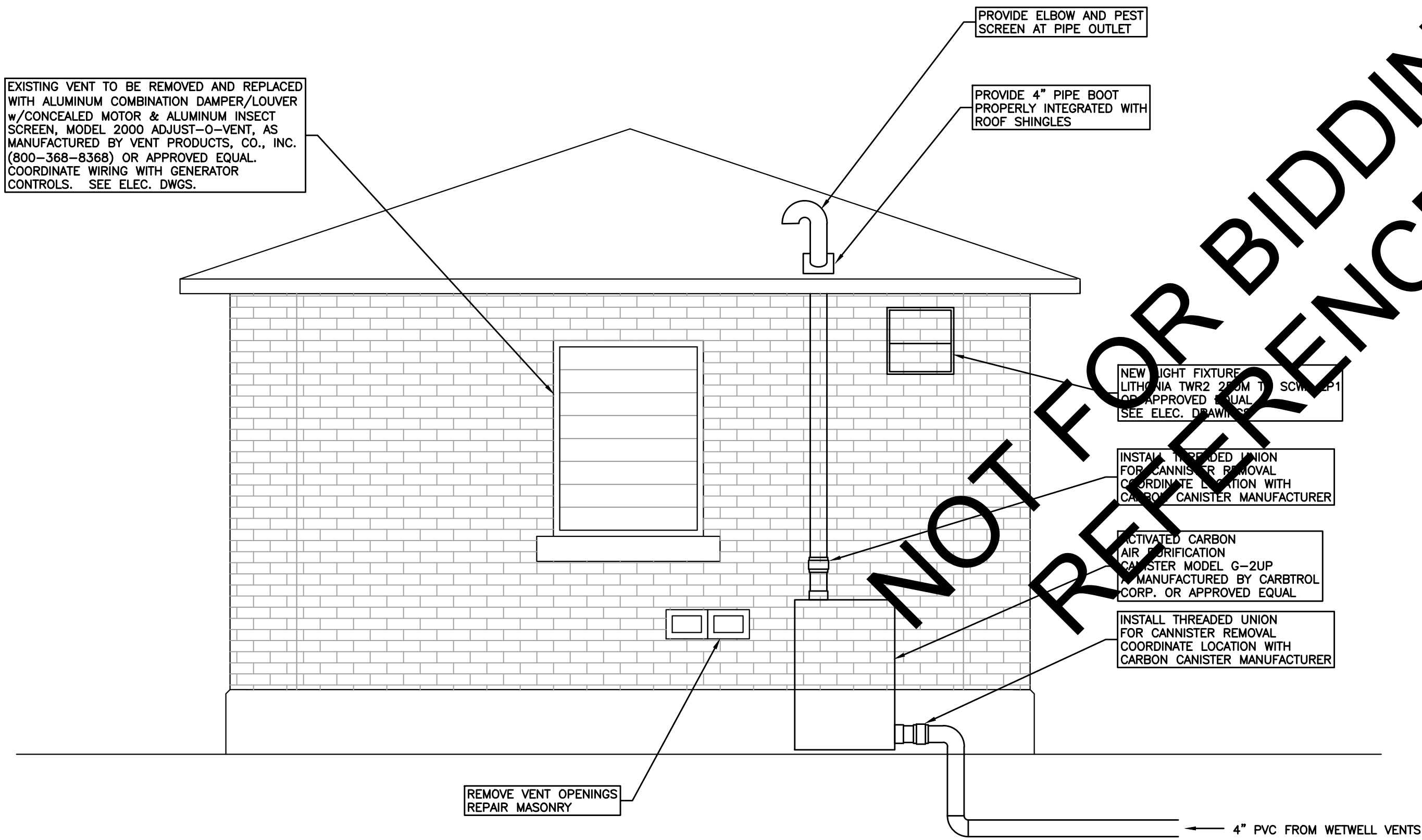
2:00:40:01:40:01:7:img2014-017PLANS.dwg, 2/16/2016 12:29:37 PM



ELEVATION LOOKING NORTH
SCALE: 1/2"=1'-0"



ELEVATION LOOKING WEST
SCALE: 1/2"=1'-0"



ELEVATION LOOKING SOUTH
SCALE: 1/2"=1'-0"

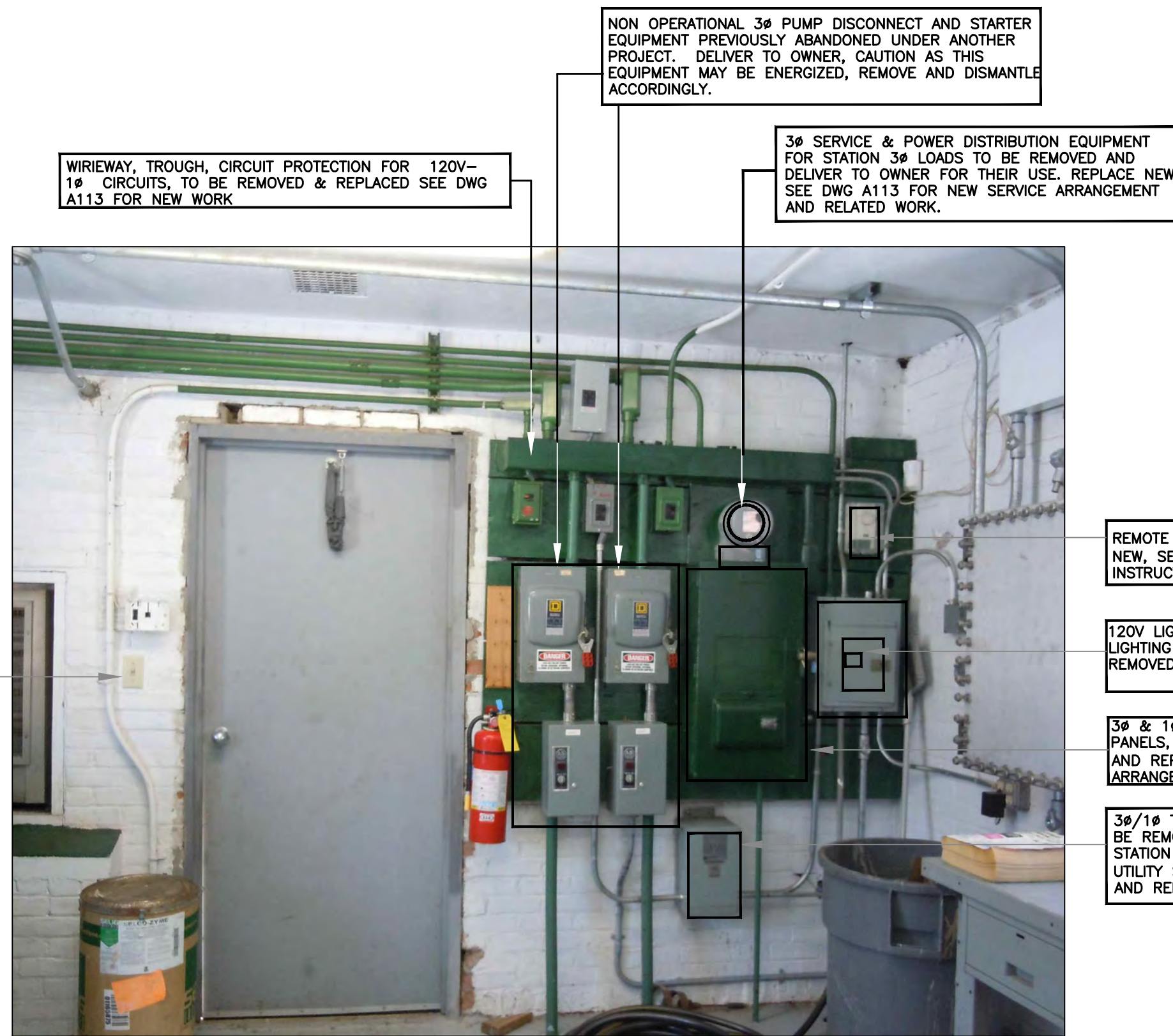


ELEVATION LOOKING EAST
SCALE: 1/2"=1'-0"

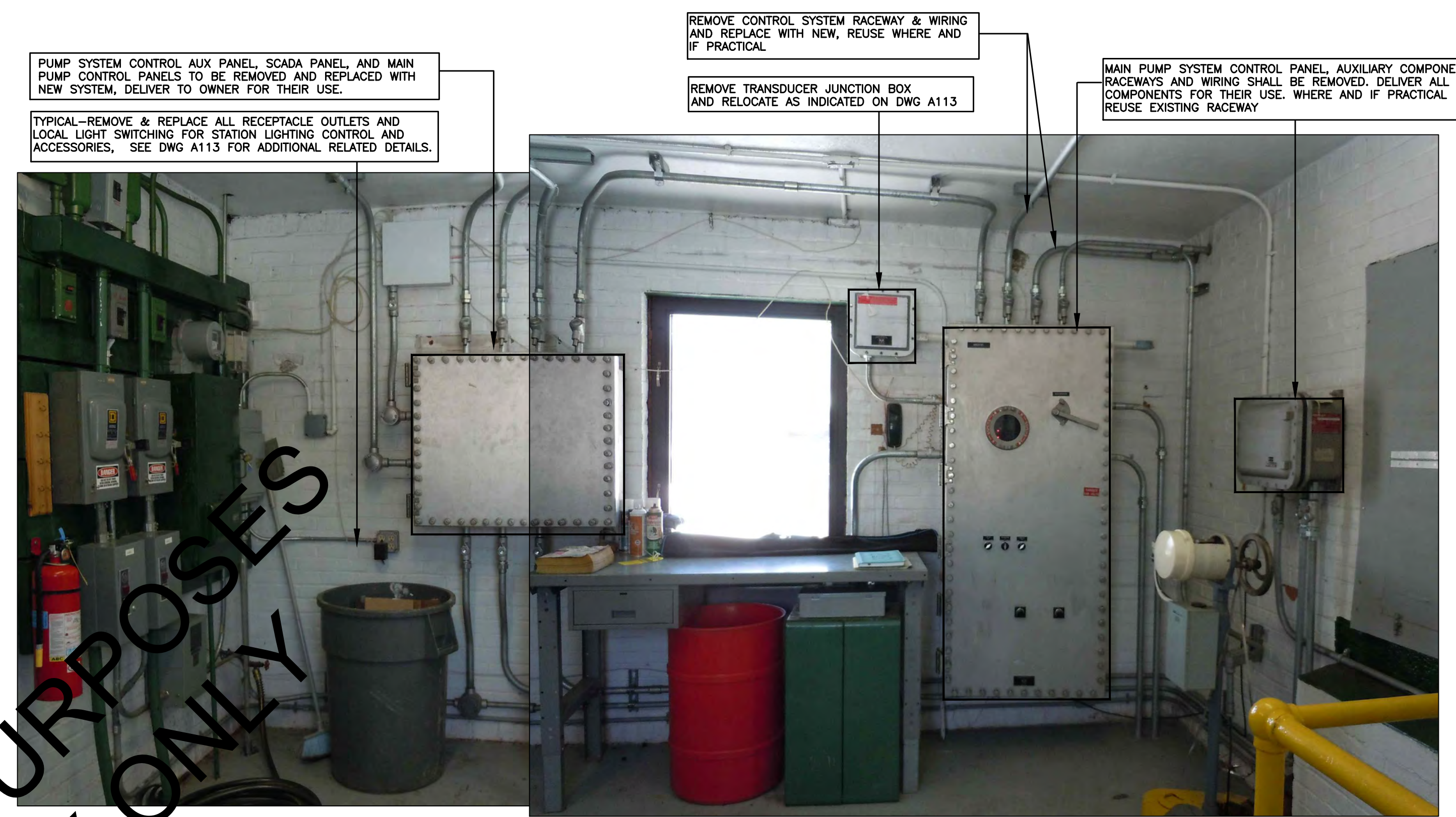
NOT FOR BIDDING PURPOSES
REFERENCE COPY ONLY

Z:\01402014\017\mwp\2014-017\PLANS.dwg, 2/16/2016 12:59:57 PM

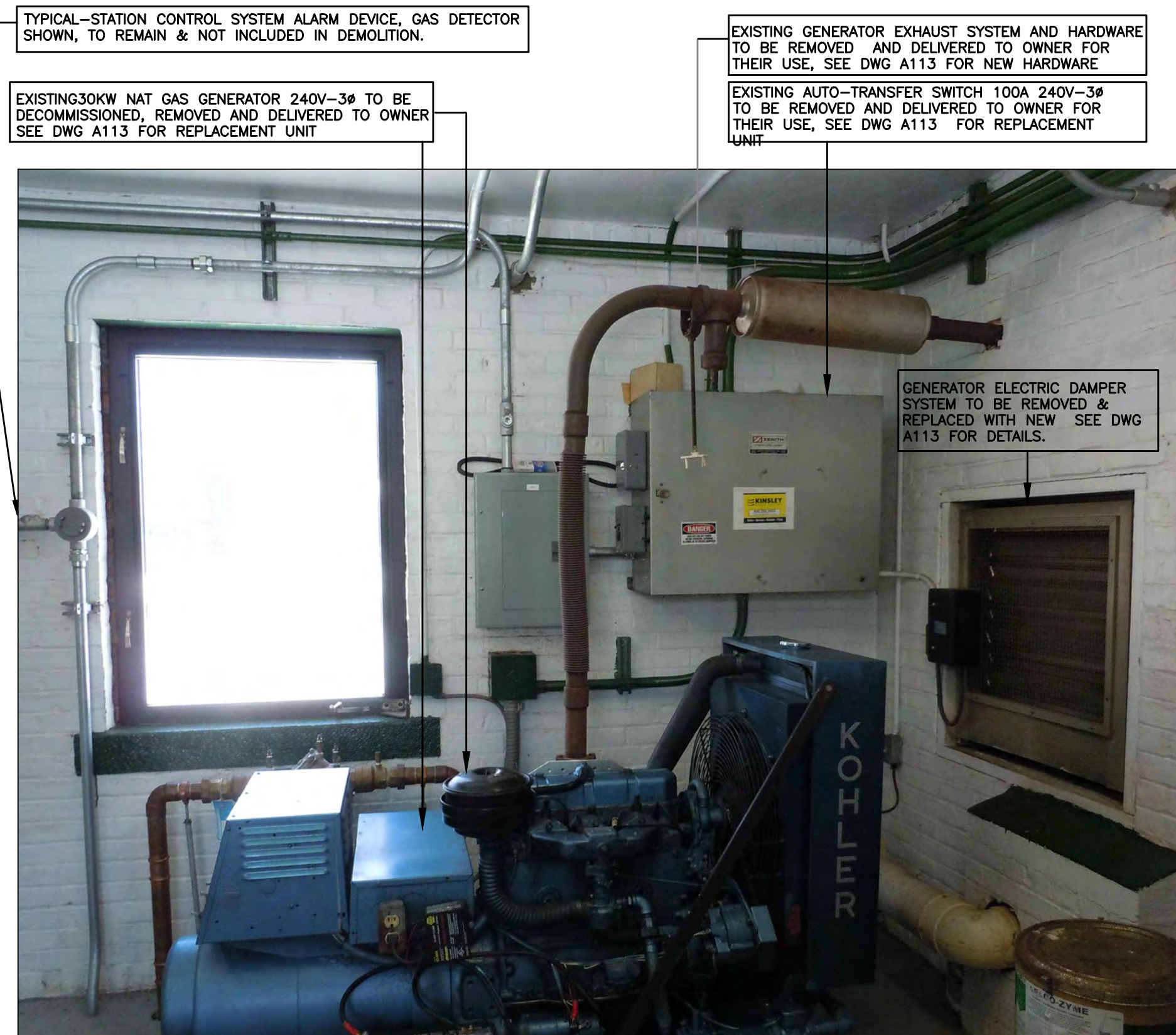
CRISCUOLO ENGINEERING LLC CONSULTING ENGINEERS LAND SURVEYORS 420 East Main Street Building 1 - Suite 9 Branford, CT 06405 TEL: 203/481-0607 FAX: 203/488-5729	JOB TITLE: ARCH STREET PUMP STATION REHABILITATION PROJECT #151 ARCH STREET HAMDEN, CONNECTICUT		PREPARED FOR: GREATER NEW HAVEN WATER POLLUTION CONTROL AUTHORITY	DRAWING NO.: A110
	REV. DATE:	DESCRIPTION:	DATE: 2/16/16	DRAWING TITLE: PUMP STATION ELEVATIONS
			SCALE: 1/2"=1'-0"	DRAWN: J.M.P.
			CHECKED: R.A.C.	JOB: 2014.017



ELECTRICAL DEMO - SOUTH ELEVATION



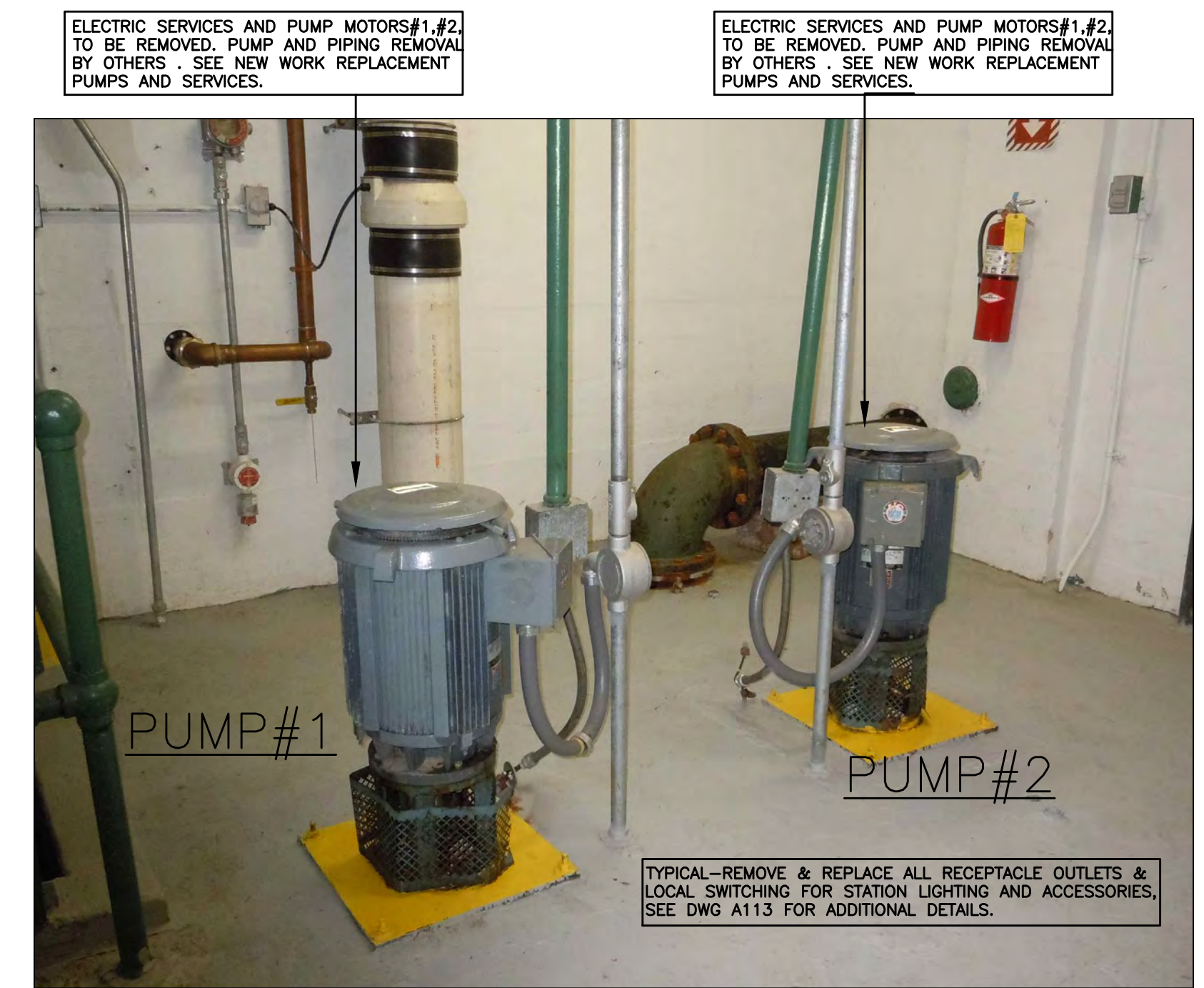
ELECTRICAL DEMO - WEST ELEVATION



ELECTRICAL DEMO - EAST ELEVATION



ELECTRICAL DEMO - NORTH ELEVATION



ELECTRICAL DEMO - MOTOR ROOM LEVEL

WIRIWAY, TROUGH, CIRCUIT PROTECTION FOR 120V-1Ø CIRCUITS, TO BE REMOVED & REPLACED SEE DWG A113 FOR NEW WORK.

NON OPERATIONAL 3Ø PUMP DISCONNECT AND STARTER EQUIPMENT PREVIOUSLY ABANDONED UNDER ANOTHER PROJECT. DELIVER TO OWNER, CAUTION AS THIS EQUIPMENT MAY BE ENERGIZED, REMOVE AND DISMANTLE ACCORDINGLY.

3Ø SERVICE & POWER DISTRIBUTION EQUIPMENT FOR STATION 3Ø LOADS TO BE REMOVED AND DELIVER TO OWNER FOR THEIR USE. REPLACE NEW SEE DWG A113 FOR NEW SERVICE ARRANGEMENT AND RELATED WORK.

REMOTE T'STAT FOR 5KW HTR REPLACE WITH NEW, SEE NEW WORK DWG'S FOR DETAILED INSTRUCTION.

120V LIGHTING PANEL SERVING STATION LIGHTING AND RECEPTACLE OUTLETS TO BE REMOVED AND REPLACED, SEE NEWWORK DWG.

3Ø & 1Ø SERVICE DISTRIBUTION HARDWARE PANELS, RACEWAYS, AND WIRING TO BE REMOVED AND REPLACED WITH NEW SEE DWG# FOR NEW ARRANGEMENT & WORK

3Ø/1Ø TRANSFORMER FOR 1Ø STATION LOADS TO BE REMOVED AND DELIVERED TO OWNER. FUTURE STATION LOADS WILL BE SERVED FROM NEW UTILITY SERVICE. SEE DWG'S FOR NEW SERVICE AND RELATED WORK.

PUMP SYSTEM CONTROL AUX PANEL, SCADA PANEL, AND MAIN PUMP CONTROL PANELS TO BE REMOVED AND REPLACED WITH NEW SYSTEM, DELIVER TO OWNER FOR THEIR USE.

TYPICAL-REMOVE & REPLACE ALL RECEPTACLE OUTLETS AND LOCAL LIGHT SWITCHING FOR STATION LIGHTING CONTROL AND ACCESSORIES, SEE DWG A113 FOR ADDITIONAL RELATED DETAILS.

REMOVE CONTROL SYSTEM RACEWAY & WIRING AND REPLACE WITH NEW, REUSE WHERE AND IF PRACTICAL.

REMOVE TRANSDUCER JUNCTION BOX AND RELOCATE AS INDICATED ON DWG A113

MAIN PUMP SYSTEM CONTROL PANEL, AUXILIARY COMPONENTS, RACEWAYS AND WIRING SHALL BE REMOVED. DELIVER ALL COMPONENTS FOR THEIR USE. WHERE AND IF PRACTICAL REUSE EXISTING RACEWAY

TYPICAL-STATION CONTROL SYSTEM ALARM DEVICE, GAS DETECTOR SHOWN, TO REMAIN & NOT INCLUDED IN DEMOLITION.

EXISTING 30KW NAT GAS GENERATOR 240V-3Ø TO BE DECOMMISSIONED, REMOVED AND DELIVERED TO OWNER SEE DWG A113 FOR REPLACEMENT UNIT

EXISTING GENERATOR EXHAUST SYSTEM AND HARDWARE TO BE REMOVED AND DELIVERED TO OWNER FOR THEIR USE, SEE DWG A113 FOR NEW HARDWARE

EXISTING AUTO-TRANSFER SWITCH 100A 240V-3Ø TO BE REMOVED AND DELIVERED TO OWNER FOR THEIR USE, SEE DWG A113 FOR REPLACEMENT UNIT

DISABLED TANK LEVEL SENSOR, PUMP CONTROLS, DEVICES, ABANDONED FROM OTHER PROJECT, TO BE REMOVED ALONG WITH CONDUIT & CIRCUITS REMOVE ALL NON-FUNCTIONAL COMPONENTS

PUMP SYSTEM AUX CONTROL PANEL W/DIGITAL CONTROL INTERFACE RACEWAYS WIRING TO BE REMOVE

5 KW UNIT HEATER WITH REMOTE T'STAT REMOVE AND REPLACE WITH NEW, SEE DWG# A113 FOR NEW WORK

ELECTRIC SERVICES AND PUMP MOTORS#1,#2 TO BE REMOVED. PUMP AND PIPING REMOVAL BY OTHERS. SEE NEW WORK REPLACEMENT PUMPS AND SERVICES.

ELECTRIC SERVICES AND PUMP MOTORS#1,#2 TO BE REMOVED. PUMP AND PIPING REMOVAL BY OTHERS. SEE NEW WORK REPLACEMENT PUMPS AND SERVICES.

GENERATOR ELECTRIC DAMPER SYSTEM TO BE REMOVED & REPLACED WITH NEW SEE DWG A113 FOR DETAILS.

GENERATOR ELECTRIC DAMPER SYSTEM TO BE REMOVED & REPLACED SEE NEW WORK A113 FOR DETAILS.

TYPICAL-REMOVE & REPLACE ALL RECEPTACLE OUTLETS & LOCAL SWITCHING FOR STATION LIGHTING AND ACCESSORIES, SEE DWG A113 FOR ADDITIONAL DETAILS.

TYPICAL-REMOVE & REPLACE ALL RECEPTACLE OUTLETS & LOCAL SWITCHING FOR STATION LIGHTING AND ACCESSORIES, SEE DWG A113 FOR ADDITIONAL DETAILS.

2/20/16 10:01:40:17:mpa111.dwg, 2/16/2016 12:10:54 PM

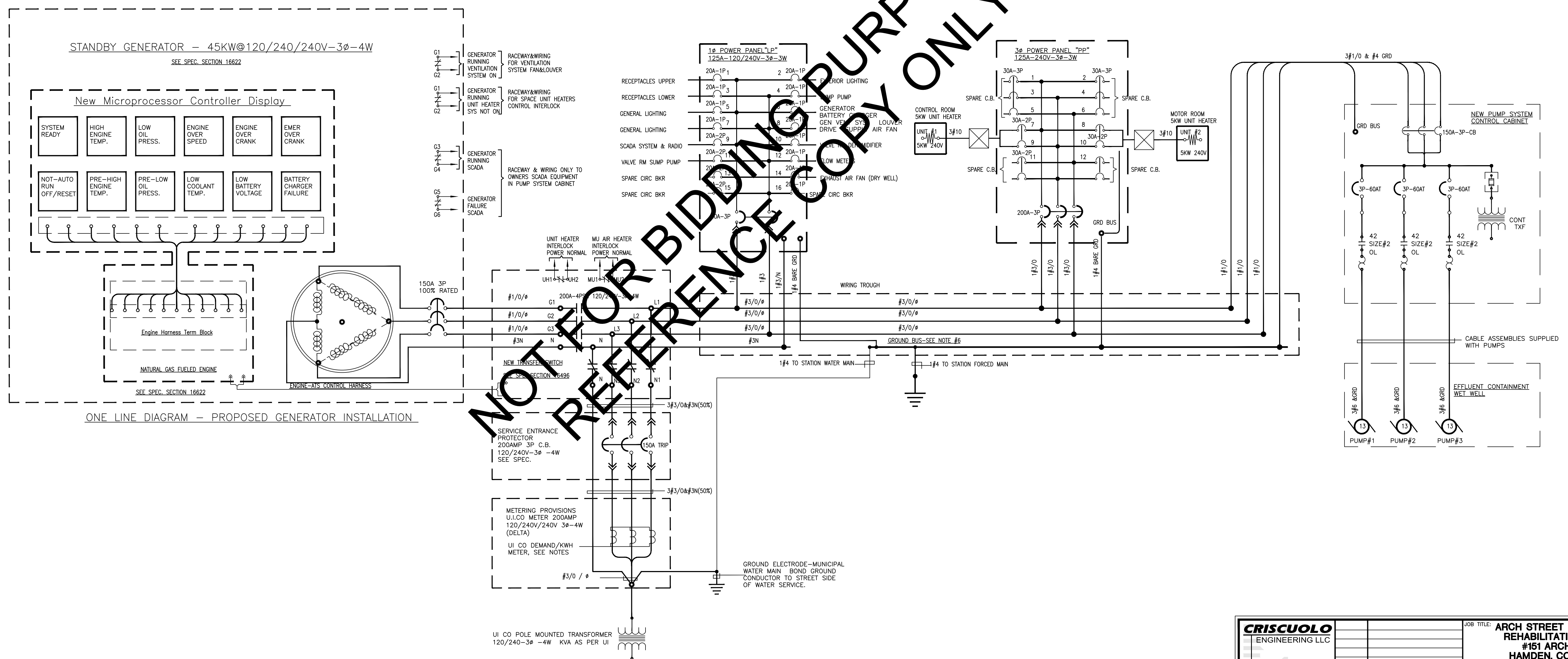
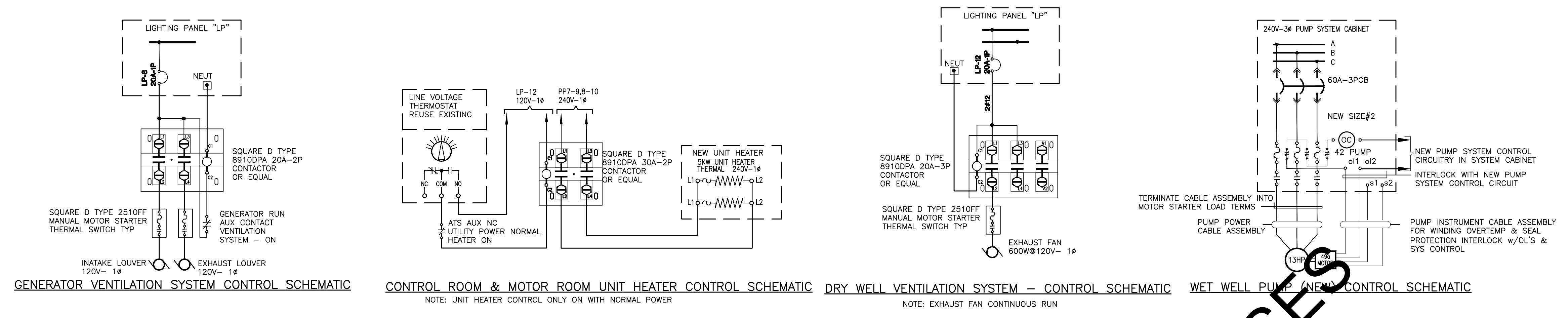
CRISCUOLO ENGINEERING LLC CONSULTING ENGINEERS LAND SURVEYORS 420 East Main Street Building 1 - Suite 9 Branford, CT 06405 TEL: 203/481-0607 FAX: 203/488-5729	REV. DATE:	DESCRIPTION:	DATE: 2/16/16	DRAWING TITLE:	DRAWING NO.:
	SCALE: N.T.S.			ELECTRICAL DEMOLITION ELEVATIONS	A111
	DRAWN: J.M.P.				
	CHECKED: A.A.D.				
JOB: 2014.017					CADD FILE: A111

JOB TITLE: ARCH STREET PUMP STATION REHABILITATION PROJECT #161 ARCH STREET HAMDEN, CONNECTICUT

PREPARED FOR: GREATER NEW HAVEN WATER POLLUTION CONTROL AUTHORITY

ELECTRICAL SERVICE INSTALLATION NOTES

- DO NOT SCALE DRAWINGS. ALL LOCATIONS SHALL BE FIELD VERIFIED PRIOR TO THE EXECUTION OF WORK. THE LOCATION OF ALL DUCTBANKS, RACEWAYS, EQUIPMENT ARE SHOWN DIAGRAMMATICALLY. THE EXISTING UTILITIES ARE SHOWN IN THEIR ASSUMED AND APPROXIMATE LOCATIONS. FINAL LOCATIONS WILL BE DETERMINED PRIOR TO INSTALLATION.
- EXISTING ELECTRIC SERVICE EQUIPMENT TO BE REMOVED AS DETAILED IN ELECTRICAL DEMOLITION DRAWING. REPLACE EXISTING ELECTRIC SERVICE WITH NEW COMPONENTS AS DETAILED IN THESE DRAWINGS AND AS OUTLINED IN SPECIFICATIONS.
- UNSCHEDULED ELECTRIC POWER INTERRUPTIONS WILL NOT BE ALLOWED. WORK REQUIRING POWER INTERRUPTION SHALL BE JOINTLY SCHEDULED WITH MANAGEMENT AND THE PROJECT ENGINEER.
- REMOVE AND REPLACE EXISTING GENERATOR SYSTEM & TRANSFER SWITCH. THE NEW GENERATOR SYSTEM AND TRANSFER SWITCH SHALL BE FURNISHED AND INSTALLED BY THE ELECTRICAL CONTRACTOR. PROVIDE COMPLETE INSTALLATION AND FIELD TERMINATIONS TO GENERATOR AUXILIARY EQUIPMENT INCLUDING REMOTE ALARM PANEL, BATTERY CHARGER, MAINTENANCE RECEPTACLE, ALL POWER, CONTROL AND INSTRUMENT WIRING.
- BOND GENERATOR OUTPUT AND FRAME, DISTRIBUTION PANELS, AND ALL NON CURRENT METALLIC DISTRIBUTION COMPONENTS TO THE STATION GRID WITH A BARE CU CONDUCTOR. TEST END POINT, GENERATOR EQUIPMENT FRAME TO ASSURE A UNIFORM CONTINUOUS GROUND CONNECTION.
- FURNISH 1/4"x2"x18" COPPER GROUND BUS BAR WITHIN WIRE WAY NOTED ON THE ONE LINE DIAGRAM. GROUND BUS BAR SHALL ACCOMMODATE, DRILLED&TAPPED FIXTURES FOR (12) #3 LUG CONNECTIONS.
- EXTERIOR AND UNDERGROUND RACEWAY SHALL BE GALVANIZED RIGID STEEL TYPE AS DETAILED IN ELECTRICAL SPECIFICATION. INTERIOR RACEWAYS SHALL BE AS DETAILED IN ELECTRICAL SPECIFICATION. FLEXIBLE METAL AND SEALTIGHT RACEWAY MAY NOT BE UTILIZED FOR DISTRIBUTION SYSTEM EXCEPT AS SPECIFICALLY NOTED AND DETAILED FOR MOTOR ASSEMBLIES. REFER TO SPECIFICATIONS FOR RELATED INSTRUCTION.
- ACTIVE RACEWAYS SHALL CONTAIN A SYSTEM GROUND CONDUCTOR, 4AWG MIN OR AS NOTED, BARE COPPER CONDUCTOR, BOND CONDUIT BUSHINGS TO STATION GROUND GRID.
- METER PROVISIONS SHALL BE INSTALLED EXTERIOR AT SOUTH WEST WALL. REFER TO UI CO. METER AND SERVICE REQUIREMENTS REGARDING APPROVED EQUIPMENT, VOLTAGE & AMP RATING, PLUGS, WEATHER TIGHT ENCLOSURE AND APPROVED MANUFACTURE(S).



NOT FOR BIDDING PURPOSES ONLY

CRISCUOLO ENGINEERING LLC CONSULTING ENGINEERS LAND SURVEYORS 420 East Main Street Building 1 - Suite 9 Branford, CT 06405 TEL: 203/481-0607 FAX: 203/488-5729	JOB TITLE: ARCH STREET PUMP STATION REHABILITATION PROJECT #151 ARCH STREET HAMDEN, CONNECTICUT
	PREPARED FOR: GREATER NEW HAVEN WATER POLLUTION CONTROL AUTHORITY
REV. DATE: DESCRIPTION:	DATE: 2/16/16 SCALE: N.T.S. DRAWN: J.M.P. CHECKED: A.A.D. JOB: 2014.017
DRAWING TITLE:	DRAWING NO.:
ELECTRICAL ONE-LINE DIAGRAMS	A112
CADD FILE: A112	CADD FILE: A112

