

NEW HAVEN, CONNECTICUT

GREATER NEW HAVEN WPCA

EAST ST. PUMP STATION

FUEL STORAGE TANK REPLACEMENT

PROJECT NO. SSF 2015-05

ISSUE FOR BID

BID SET NO. _____

JUNE 2016

- GNHWPCA BOARD OF DIRECTORS
- | | |
|----------------------------|---------------|
| ALPHONSE E. PASCHILLO, JR. | CHAIRMAN |
| STEPHEN A. MONGILLO | VICE CHAIRMAN |
| JOYCE ALTON | DIRECTOR |
| MICHAEL NIMAN | DIRECTOR |
| CLAYTON WILLIAMS | DIRECTOR |
| RUSSELL CYR | DIRECTOR |
| JENNIFER D. GINZBERG, ESQ. | DIRECTOR |
| TOM CRISCHOLLO | DIRECTOR |
| VINCENT ANTONIO | DIRECTOR |

EXECUTIVE DIRECTOR
SIDNEY HOLBROOK

DIRECTOR OF FINANCE AND ADMINISTRATION
CABRIEL VARCA

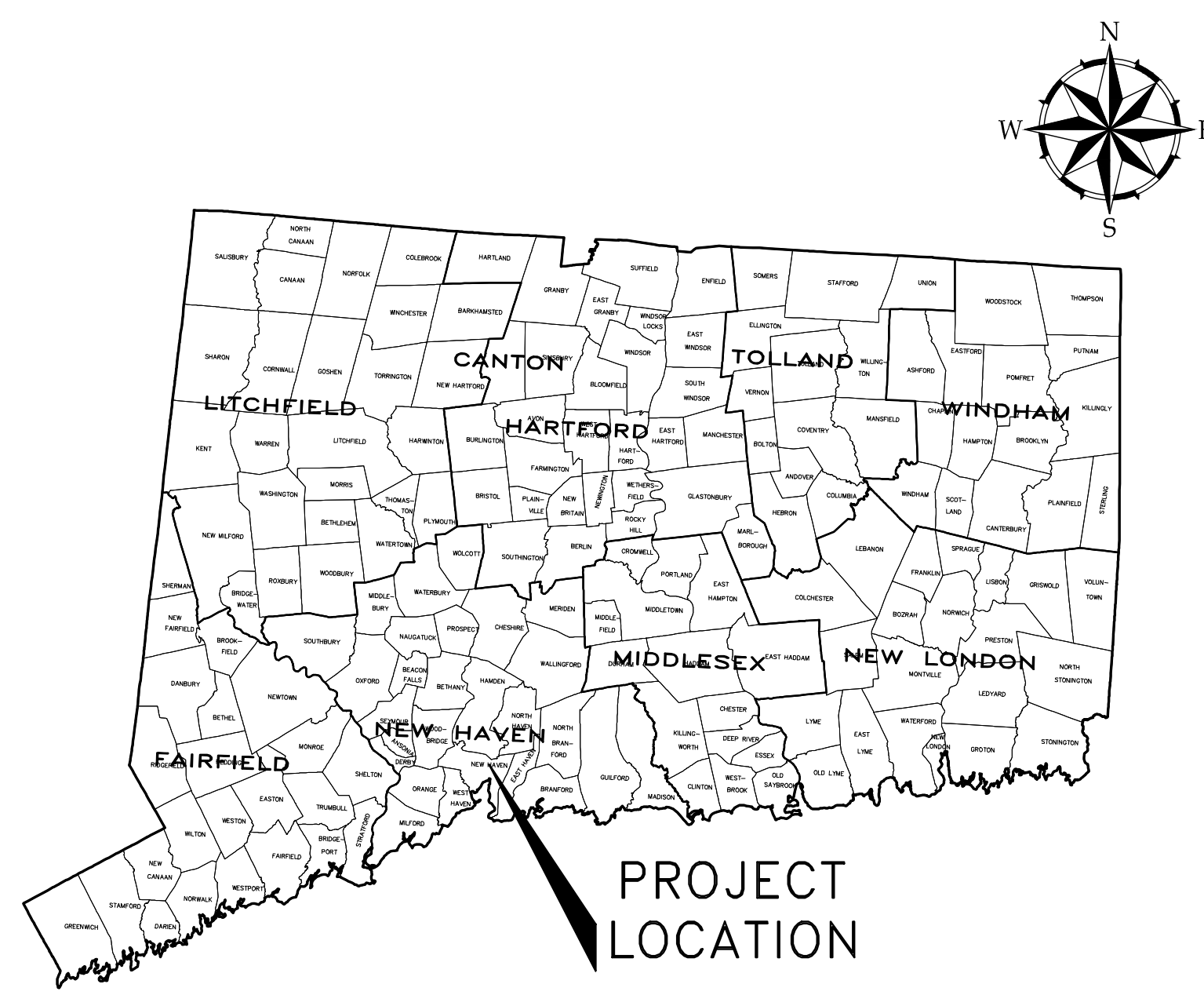
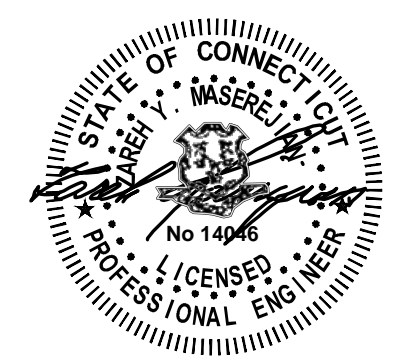
DIRECTOR OF ENGINEERING
THOMAS V. SGROI, P.E.

DIRECTOR OF OPERATIONS
GARY ZRELAK

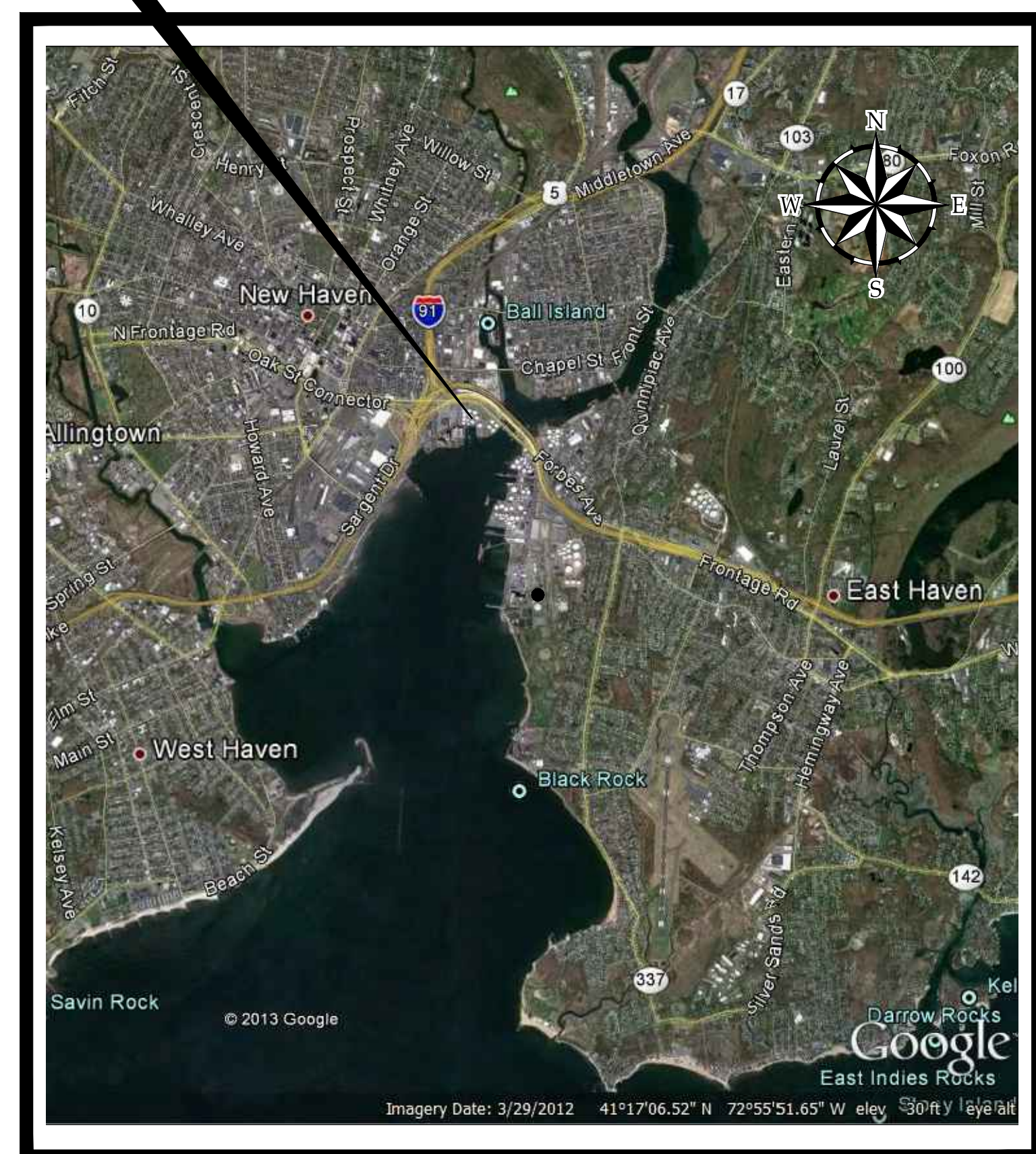
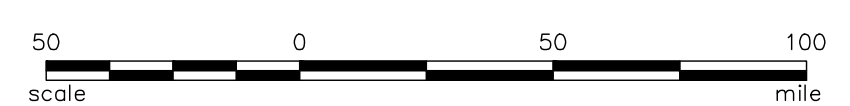
DEPUTY DIRECTOR OF OPERATIONS
JOSEPH MEGALE, P.E.

980 Washington Street, Suite 325 | Dedham, Massachusetts 02026
860.446.5518 | www.woodardcurran.com

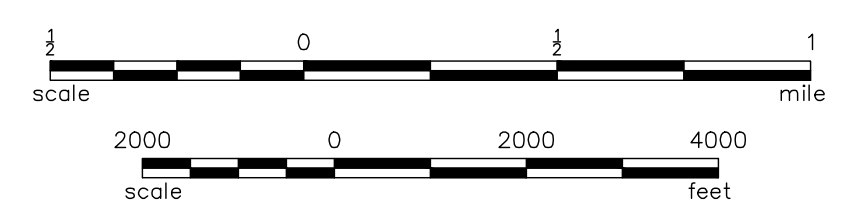
COMMITMENT & INTEGRITY DRIVE RESULTS



PROJECT LOCATION MAP



SITE LOCATION MAP



Sheet List Table

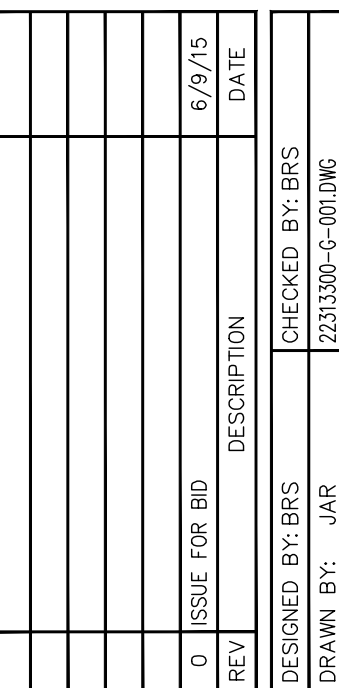
THESE ARE GENERAL ABBREVIATIONS.
NOT ALL APPEAR ON THESE DRAWINGS

CL2	CHLORINATION	MCC	MOTOR CONTROL CENTER	VFD	VARIABLE
CMU	CORRUGATED METAL PIPE	MECH	MECHANICAL		
CO	CONCRETE MASONRY UNIT	MFG	MANUFACTURER	W/	WITH
CAOG	COAGULANT	MH	MANHOLE	WAS	WASTE
COL	COLUMN	MIN	MINIMUM	WAT	WATER
CON	CONCRETE	MJ	MECHANICAL JOINT	WD	WOOD
CONC	CONCRETE	MTL	METAL	WH	WATER H
CONN	CONNECTION	ML	MIXED LIQUOR	WIS	WATER S
CONST	CONSTRUCTION			WST	WEATHER
CONT	CONTINUOUS	NO	NUMBER	WYM	WEED
CRW	CONCRETE REINFORCED WALL	NS	NEAR SIDE		
COUNTERSINK	COUNTERSINK	NTS	NOT TO SCALE		
CU	COPPER				
CW	WATER-POTABLE				
		OC	ON CENTER		
D	DRAIN	OD	OUTSIDE DIAMETER		
DBC	DIRECT BURIAL CABLE	OH	OVERHEAD		
DI	DUCTILE IRON	OPER	OPERATOR		
DIA;Ø	DIAMETER				
DISCH	DISCHARGE	PCCP	PRESTRESSED CONCRETE CURB AND GUTTER PIPE		
DN	DOWN	PD	PROCESS DRAIN		
DR	DRAIN	PEN	PENETRATION		
DW	DOMESTIC WATER	PESD	PLANT EFFLUENT SAMPLE DISCHARGE		
		PESS	PLANT EFFLUENT SAMPLE SUCTION		
		PL	PLATE		
E	MODULES OF ELASTICITY	PLYWD	PLYWOOD		
EA	EACH	PRW	PROCESS WATER		
EF	EACH FACE	PS	PRIMARY SEDGE		
EJEC	EJECTOR	PSF	POUNDS PER SQUARE FOOT		
EL/ELEV	ELEVATION	PSI	POUNDS PER SQUARE INCH		
ELEC COND	ELECTRICAL CONDUIT	PT	PRESSURE TREATED		
EOP	END OF PIPE	PTD	PLAIN END		
EQUIP	EQUIPMENT	PVC	POLY VINYL CHLORIDE		
EW	EACH WAY	PW	PLAIN WATER		
EX	EXCEPT	PWR	PROCESS WASTE RETURN		
EXIST	EXISTING				
EXP	EXPANSION	R	RADIUS		
EXT	EXTERIOR	RCE	REINFORCED CONCRETE ELLIPTICAL PIPE		
EXTEN	EXTENSION	RCP	REINFORCED CONCRETE PIPE		
		ROD	ROOD DRAINS		
Fb	BENDING STRESS	REIN	REINFORCED		
Fc	COMPRESSIVE STRESS	REQD	REQUIRED		
FL	TENSILE STRESS	RESIL	RESILIENT		
FC	FIRE CODE	R.O.	ROUGH OPENING		
FD	FLOOR DRAIN	RS	RECYCULATED SLUDGE		
FDN	FOUNDATION	R/W	RIGID OF WAY		
FE	FIRE EXTINGUISHER				
FES	FLARED END SECTION				
FF;FIN FLR	FINISH FLOOR				
FI	FIRE HYDRANT				
FIN	FINISHED				
FIN GR	FINISH GRADE				
FLR	FLOOR				
FLR'G	FLOORING				
FM	FORCE MAIN				
FOS	FACE OF STRUCTURE				
FRP	FIBERGLASS REINFORCED PLASTIC				

1. THE GREATER NEW HAVEN WATER POLLUTION CONTROL AUTHORITY PUMP STATIONS ARE OPERATIONAL FACILITIES AND SHALL REMAIN FULLY OPERATIONAL DURING THE CONSTRUCTION PERIOD. THE CONTRACTOR SHALL COORDINATE THE SEQUENCE OF CONSTRUCTION WITH THE OWNER AND THE ENGINEER TO MINIMIZE OPERATIONAL IMPACTS THROUGHOUT THE CONSTRUCTION PERIOD. THE COST OF ANY ADDITIONAL WORK REQUIRED TO MINIMIZE OPERATIONAL IMPACTS THROUGHOUT THE CONSTRUCTION PERIOD WILL BE CONSIDERED AS AN ADD-TO TO THE PROJECT. ALSO, THE NECESSITY TO COORDINATE CONSTRUCTION ACTIVITIES WITH THE OWNER AND ENGINEER WILL NOT BE CONSIDERED A VALID OR MERITORIOUS REASON FOR A DELAY CLAIM OR TIME EXTENSION ON THIS PROJECT.
2. THE LOCATIONS OF EXISTING PIPE, STRUCTURES, ELECTRICAL, AND ALL OTHER FACILITIES SHOWN ON THE PLANS ARE APPROXIMATE AND REQUIRE FIELD VERIFICATION BY THE CONTRACTOR.
3. CONTRACTOR SHALL REMOVE FROM THE PROJECT SITE AND LEGALLY DISPOSE OF ALL MATERIALS SUBJECT TO DEMOLITION WORK UNLESS OTHERWISE NOTED.
4. THE CONTRACTOR SHALL RESTORE ALL AREAS DISTURBED BY CONSTRUCTION TO ORIGINAL FINISH (GRAVEL, PAVEMENT, GRASS, ETC.) INCLUDING THE CONSTRUCTION STAGING AND PARKING AREAS UNLESS OTHERWISE NOTED ON THE PLANS OR AS DIRECTED OTHERWISE BY THE ENGINEER.
5. PROTECT AND DO NOT DISTURB PROPERTY IRONS AND MONUMENTS. IF DISTURBED, RESET AT THE CONTRACTOR'S EXPENSE, BY A LICENSED PROFESSIONAL LAND SURVEYOR REGISTERED IN THE STATE OF CONNECTICUT.
6. THE CONTRACTOR SHALL OBTAIN ALL STATE, LOCAL, AND UTILITY PERMITS REQUIRED FOR THE COMPLETION OF WORK UNDER THIS CONTRACT AND NOT INCLUDED IN THE COST OF THE PROJECT. AS WELL AS ANY ADDITIONAL PERMITS REQUIRED FOR COMPLETION OF THE WORK, AND ALL FEES ASSOCIATED WITH THIS WORK ARE THE RESPONSIBILITY OF THE CONTRACTOR.
7. THE CONTRACTOR SHALL TAKE ALL NECESSARY PRECAUTIONS TO PREVENT EQUIPMENT FLUIDS FROM REACHING ANY WATER COURSE. ANY INADVERTENT FLUID DISCHARGES SHALL BE IMMEDIATELY CLEANED FROM THE WATERS USING WHATEVER MEANS NECESSARY, AS DETERMINED BY THE ENGINEER.
8. EXISTING FACILITIES SHALL BE PROTECTED AS REQUIRED DURING CONSTRUCTION. THE ASSOCIATED COSTS ARE INCIDENTAL TO THE PROJECT. ANY DAMAGE TO EXISTING FACILITIES CAUSED BY THE CONTRACTOR SHALL BE REPAIRED AS DIRECTED BY THE ENGINEER AT NO ADDITIONAL COST TO THE OWNER.
9. ALL DIMENSIONS AND ELEVATIONS ARE APPROXIMATE. CONTRACTOR IS RESPONSIBLE FOR FIELD VERIFICATION OF THE LOCATION AND ELEVATIONS SHOWN ON DRAWINGS PRIOR TO THE START OF DEMOLITION WORK AND CONSTRUCTION OF NEW WORK.
10. ANY UTILITY LOCATIONS SHOWN ARE APPROXIMATE. CONTRACTOR SHALL FIELD LOCATE ALL UTILITIES UNDER THE PROJECT. CONTRACTOR SHALL BE RESPONSIBLE TO START WORK, ANY UTILITIES DAMAGED WHILE PERFORMING THE WORK OF THIS CONTRACT SHALL BE REPAIRED OR REPLACED AS DIRECTED BY ENGINEER AT NO ADDITIONAL COST TO THE OWNER. CONTRACTOR SHALL ALSO CONFIRM THE LOCATION OF ANY OTHER UTILITIES WITHIN THE LIMITS OF WORK NOT SHOWN ON DRAWINGS AS REQUIRED TO COMPLETE THE WORK OF THIS CONTRACT.
11. ANY UTILITIES REQUIRING RELOCATION TO ALLOW PERFORMANCE OF THE WORK OF THIS CONTRACT SHALL BE RELOCATED AS DIRECTED BY THE ENGINEER AT NO ADDITIONAL COST TO THE OWNER, WHETHER SHOWN ON DRAWINGS OR NOT.
12. ALL ACTION ITEMS FROM THE BASE PLANS SHOWN IN GRAY SCALE, GENERALLY DO NOT APPLY TO THE WORK OF THIS PROJECT.



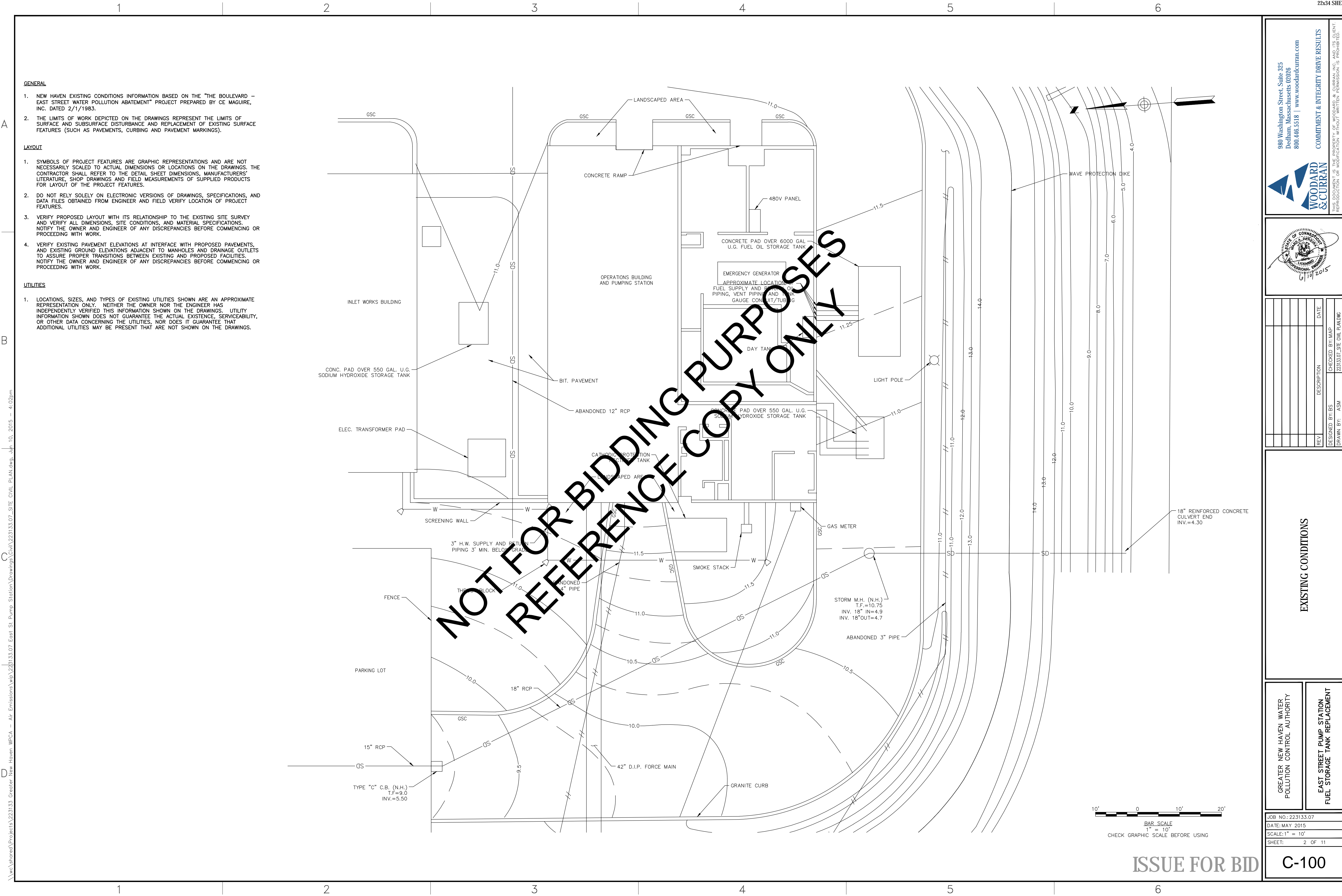
WOODWARD



GREATER NEW HAVEN WATER
POLLUTION CONTROL AUTHORITY

EAST STREET PUMP STATION
FUEL STORAGE TANK REPLACEMENT

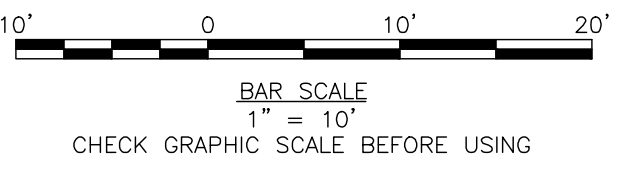
G-001



- GENERAL**
1. NEW HAVEN EXISTING CONDITIONS INFORMATION BASED ON THE "THE BOULEVARD - EAST STREET WATER POLLUTION ABATEMENT" PROJECT PREPARED BY CE MAGUIRE, INC. DATED 2/1/1983.
 2. THE LIMITS OF WORK DEPICTED ON THE DRAWINGS REPRESENT THE LIMITS OF SURFACE AND SUBSURFACE DISTURBANCE AND REPLACEMENT OF EXISTING SURFACE FEATURES (SUCH AS PAVEMENTS, CURBING AND PAVEMENT MARKINGS).

- LAYOUT**
1. SYMBOLS OF PROJECT FEATURES ARE GRAPHIC REPRESENTATIONS AND ARE NOT NECESSARILY SCALED TO ACTUAL DIMENSIONS OR LOCATIONS ON THE DRAWINGS. THE CONTRACTOR SHALL REFER TO THE DETAIL SHEET DIMENSIONS, MANUFACTURERS' LITERATURE, SHOP DRAWINGS AND FIELD MEASUREMENTS OF SUPPLIED PRODUCTS FOR LAYOUT OF THE PROJECT FEATURES.
 2. DO NOT RELY SOLELY ON ELECTRONIC VERSIONS OF DRAWINGS, SPECIFICATIONS, AND DATA FILES OBTAINED FROM ENGINEER AND FIELD VERIFY LOCATION OF PROJECT FEATURES.
 3. VERIFY PROPOSED LAYOUT WITH ITS RELATIONSHIP TO THE EXISTING SITE SURVEY AND VERIFY ALL DIMENSIONS, SITE CONDITIONS, AND MATERIAL SPECIFICATIONS. NOTIFY THE OWNER AND ENGINEER OF ANY DISCREPANCIES BEFORE COMMENCING OR PROCEEDING WITH WORK.
 4. VERIFY EXISTING PAVEMENT ELEVATIONS AT INTERFACE WITH PROPOSED PAVEMENTS, AND EXISTING GROUND ELEVATIONS ADJACENT TO MANHOLES AND DRAINAGE OUTLETS TO ASSURE PROPER TRANSITIONS BETWEEN EXISTING AND PROPOSED FACILITIES. NOTIFY THE OWNER AND ENGINEER OF ANY DISCREPANCIES BEFORE COMMENCING OR PROCEEDING WITH WORK.

- UTILITIES**
1. LOCATIONS, SIZES, AND TYPES OF EXISTING UTILITIES SHOWN ARE AN APPROXIMATE REPRESENTATION ONLY. NEITHER THE OWNER NOR THE ENGINEER HAS INDEPENDENTLY VERIFIED THIS INFORMATION SHOWN ON THE DRAWINGS. UTILITY INFORMATION SHOWN DOES NOT GUARANTEE THE ACTUAL EXISTENCE, SERVICEABILITY, OR OTHER DATA CONCERNING THE UTILITIES, NOR DOES IT GUARANTEE THAT ADDITIONAL UTILITIES MAY BE PRESENT THAT ARE NOT SHOWN ON THE DRAWINGS.



980 Washington Street, Suite 325
Dedham, Massachusetts 02196
800.446.5518 | www.woodardcurran.com

WOODARD & CURRAN

COMMITMENT & INTEGRITY DRIVE RESULTS

THIS DOCUMENT IS THE PROPERTY OF WOODARD & CURRAN, INC. AND ITS CLIENT. REPRODUCTION OR MODIFICATION WITHOUT WRITTEN PERMISSION IS PROHIBITED.

6/19/2015

REV	DESCRIPTION	DATE

DESIGNED BY: BS	CHECKED BY: MAP
DRAWN BY: ASM	223133.07 SITE CIVIL PLANDWG

EXISTING CONDITIONS

GREATER NEW HAVEN WATER POLLUTION CONTROL AUTHORITY	EAST STREET PUMP STATION FUEL STORAGE TANK REPLACEMENT
---	--

JOB NO.: 223133.07	DATE: MAY 2015
SCALE: 1" = 10'	SHEET: 2 OF 11

C-100

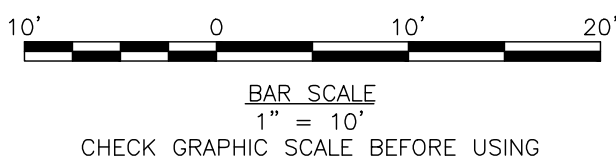
1. NEW HAVEN EXISTING CONDITIONS INFORMATION BASED ON THE "THE BOULEVARD - EAST STREET WATER POLLUTION ABATEMENT" PROJECT PREPARED BY CE MAGUIRE, INC. DATED 2/1/1983.
2. IMPLEMENT MEASURES FOR SAFETY, SECURITY AND PROTECTION OF THE WORK AT THE END OF EACH DAY PER THE GENERAL REQUIREMENTS.
3. THE LIMITS OF WORK DEPICTED ON THE DRAWINGS REPRESENT THE LIMITS OF SURFACE AND SUBSURFACE DISTURBANCE AND REPLACEMENT OF EXISTING SURFACE FEATURES (SUCH AS PAVEMENTS, CURBING AND PAVEMENT MARKINGS).

1. SYMBOLS OF PROJECT FEATURES ARE GRAPHIC REPRESENTATIONS AND ARE NOT NECESSARILY SCALED TO ACTUAL DIMENSIONS OR LOCATIONS ON THE DRAWINGS. THE CONTRACTOR SHALL REFER TO THE DETAIL SHEET DIMENSIONS, MANUFACTURERS' LITERATURE, SHOP DRAWINGS AND FIELD MEASUREMENTS OF SUPPLIED PRODUCTS FOR LAYOUT OF THE PROJECT FEATURES.
2. DO NOT RELY SOLELY ON ELECTRONIC VERSIONS OF DRAWINGS, SPECIFICATIONS, AND DATA FILES OBTAINED FROM ENGINEER AND FIELD VERIFY LOCATION OF PROJECT FEATURES.
3. VERIFY PROPOSED LAYOUT WITH ITS RELATIONSHIP TO THE EXISTING SITE SURVEY AND VERIFY ALL DIMENSIONS, SITE CONDITIONS, AND MATERIAL SPECIFICATIONS. NOTIFY THE OWNER AND ENGINEER OF ANY DISCREPANCIES BEFORE COMMENCING OR PROCEEDING WITH WORK.
4. VERIFY EXISTING PAVEMENT ELEVATIONS AT INTERFACE WITH PROPOSED PAVEMENTS, AND EXISTING GRAD ELEVATIONS. ADJUST TO MANHOLES AND DRAINAGE OUTLET TO ASSURE PROPER TRANSITIONS BETWEEN EXISTING AND PROPOSED FACILITIES. NOTIFY THE OWNER AND ENGINEER OF ANY DISCREPANCIES BEFORE COMMENCING OR PROCEEDING WITH WORK.

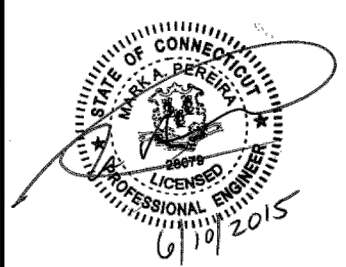
1. PRIOR TO THE COMMENCEMENT OF CONSTRUCTION ACTIVITIES, THE CONTRACTOR SHALL INSTALL ALL EROSION AND SEDIMENT CONTROL DEVICES AS SHOWN ON THE PLAN, OR AS DICTATED BY ENGINEER OR OWNER IN ACCORDANCE WITH RESPECTIVE LOCAL, STATE AND FEDERAL REGULATIONS.
2. ALL EROSION CONTROL DEVICES SHALL BE MAINTAINED IN EFFECTIVE CONDITION DURING CONSTRUCTION. THE CONTRACTOR IS RESPONSIBLE FOR THE TIMELY INSTALLATION, INSPECTION, MAINTENANCE, AND/OR REPLACEMENT OF ALL TEMPORARY AND PERMANENT EROSION CONTROL DEVICES TO ENSURE PROPER OPERATION THROUGHOUT THE LIFE OF THE PROJECT.
3. INSPECTION OF PERIMETER EROSION AND SEDIMENT BARRIERS SHALL BE MADE AT LEAST ONCE A WEEK AND WITHIN HOURS OF THE END OF A STORM WITH A RAINFALL AMOUNT OF 0.5 INCH OR GREATER. REPAIR OR REPLACE PROMPTLY WHERE DAMAGED. CLEAN OUT OF ACCUMULATED SEDIMENT BEHIND THE BARRIERS IS NECESSARY WHEN SEDIMENT DEPOSITS REACH ONE HALF THE HEIGHT OF THE BARRIER.
4. REMOVE AND DISPOSE OF ALL SEDIMENT BARRIERS AFTER CONTRIBUTING AREA IS PERMANENTLY STABILIZED.
5. TEMPORARY VEGETATIVE COVER SHALL BE APPLIED TO ANY DISTURBED AREAS THAT HAVE NOT YET REMOVED FINISHED GRADE AS SOON AS POSSIBLE. IF SEEDING CANNOT BE COMPLETED IMMEDIATELY, USE THE TEMPORARY MULCHING MEASURE TO PROTECT THE SITE. AREAS WHICH HAVE BEEN TEMPORARILY SEEDED SHOULD BE MULCHED IMMEDIATELY FOLLOWING SEEDING.
6. CONTROL DUST WITHIN DISTURBED AREAS AT ALL TIMES THROUGHOUT THE LIFE OF THE CONTRACT. ROADS ADJACENT TO THE SITE SHALL BE MUD FREE AND SWEEP FREQUENTLY TO MINIMIZE THE AMOUNT OF ACCUMULATED SEDIMENT FROM THE CONSTRUCTION AREA.
7. MATERIALS WHICH COULD BE A POTENTIAL SOURCE OF STORMWATER POLLUTION SUCH AS GASOLINE, DIESEL FUEL, HYDRAULIC OIL, ETC., SHALL BE STORED AT THE END OF EACH DAY IN A COVERED LOCATION OR TAKEN OFF-SITE IN A MANNER CONSISTENT WITH LOCAL, STATE AND FEDERAL LAW AND/OR REGULATIONS. LEGALLY DISPOSE OF IN A MANNER CONSISTENT WITH LAWS AND REGULATIONS.
8. CONSTRUCTION WASTE MUST BE PROPERLY DISPOSED OF IN ORDER TO AVOID EXPOSURE TO PRECIPITATION AT THE END OF EACH WORKING DAY. WASTE MUST BE DISPOSED OF IN A MANNER CONSISTENT WITH LOCAL, STATE AND FEDERAL LAW AND/OR REGULATIONS.
9. RESTORE ALL DISTURBED AREAS TO ORIGINAL FINISH (PAVEMENT, GRASS, ETC.) UNLESS OTHERWISE NOTED ON PLANS. RESTORATION OF ALL AREAS DAMAGED BY CONTRACTOR SHALL BE INCIDENTAL TO THE PROJECT.
10. ALL DRAINAGE INLETS WITHIN THE LIMIT OF WORK AND WITHIN 300 FEET DOWN GRADIENT SHALL RECEIVE SILT SACK INLET PROTECTION SEDIMENT CONTROL.

1. LOCATIONS, SIZES, AND TYPES OF EXISTING UTILITIES SHOWN ARE AN APPROXIMATE REPRESENTATION ONLY. NEITHER THE OWNER NOR THE ENGINEER HAS INDEPENDENTLY VERIFIED THIS INFORMATION SHOWN ON THE DRAWINGS. UTILITY INFORMATION SHOWN DOES NOT GUARANTEE THE ACTUAL EXISTENCE, SERVICEABILITY, OR OTHER DATA CONCERNING THE UTILITIES, NOR DOES IT GUARANTEE THAT ADDITIONAL UTILITIES MAY BE PRESENT THAT ARE NOT SHOWN ON THE DRAWINGS.
2. CALL BEFORE YOU DIG AT (203) 281-0444 24 HOURS BEFORE EXCAVATING. NOTIFY OWNERS OF UNDERGROUND UTILITY LINES IN THE AREA OF PROPOSED EXCAVATION AT LEAST TWO (2) WORKING DAYS, BUT NOT MORE THAN TEN (10) WORKING DAYS, PRIOR TO COMMENCEMENT OF EXCAVATION OR DEMOLITION, MAINTAIN WATER, GAS, SEWER, ELECTRIC AND OTHER UTILITIES AT ALL TIMES DURING CONSTRUCTION.
3. VERIFY AND DETERMINE THE EXACT LOCATIONS, SIZES, AND ELEVATIONS OF THE POINTS OF CONNECTIONS TO EXISTING UTILITIES AND CONFIRM THERE ARE NO INTERFERENCES WITH EXISTING UTILITIES AND THE PROPOSED UTILITY ROUTES, INCLUDING ROUTES WITHIN THE PUBLIC RIGHTS OF WAY.
4. WHERE AN EXISTING UTILITY IS FOUND TO CONFLICT WITH THE PROPOSED WORK OR EXISTING CONDITIONS OR DIFFER FROM THOSE SHOWN SUCH THAT THE WORK CANNOT BE COMPLETED AS INTENDED, DETERMINE THE LOCATION, ELEVATION, AND SIZE OF THE UTILITY AND FURNISH TO THE ENGINEER FOR THE RESOLUTION OF THE CONFLICT PER THE GENERAL AND SUPPLEMENTARY CONDITIONS.

1. REMOVE AND DISPOSE OF PIPE AND ALL DEBRIS AS SHOWN ON DRAWINGS UNLESS OTHERWISE INDICATED.
2. LEGALLY DISPOSE OF EXISTING DEBRIS PER LOCAL, STATE AND FEDERAL LAWS AND REGULATIONS.
3. IF SUSPECTED CONTAMINATED SOIL, GROUNDWATER, AND/OR OTHER MEDIA ARE ENCOUNTERED DURING EXCAVATION AND CONSTRUCTION BASED ON VISUAL, ODOR, OR OTHER EVIDENCE, STOP WORK IN THE VICINITY OF THE SUSPECT MATERIAL TO AVOID FURTHER SPREADING OF THE MATERIAL AND COMPLY WITH THE REQUIREMENTS SET FORTH IN THE GENERAL AND SUPPLEMENTARY CONDITIONS.
4. COORDINATE WITH OWNER OR ENGINEER ON STAGING AREA AND STOCKPILE AREA.



ISSUE FOR BID



REV	DESCRIPTION	DATE
	DESIGNED BY: BS	CHECKED BY: MAP
	DRAWN BY: ASM	22313307 SITE OWN PLANNING

SITE PREPARATION AND DEMOLITION PLAN

GREATER NEW HAVEN WATER
POLLUTION CONTROL AUTHORITY

EAST STREET PUMP STATION
FUEL STORAGE TANK REPLACEMENT

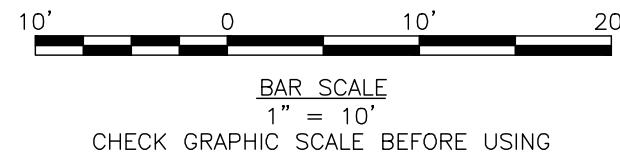
JOB NO.: 223133.07

DATE: MAY 201

SCALE: 1" = 10'

SHEET: 3 OF 11

C-101



C-102

EAST STREET PUMP STATION
FUEL STORAGE TANK REPLACEMENT

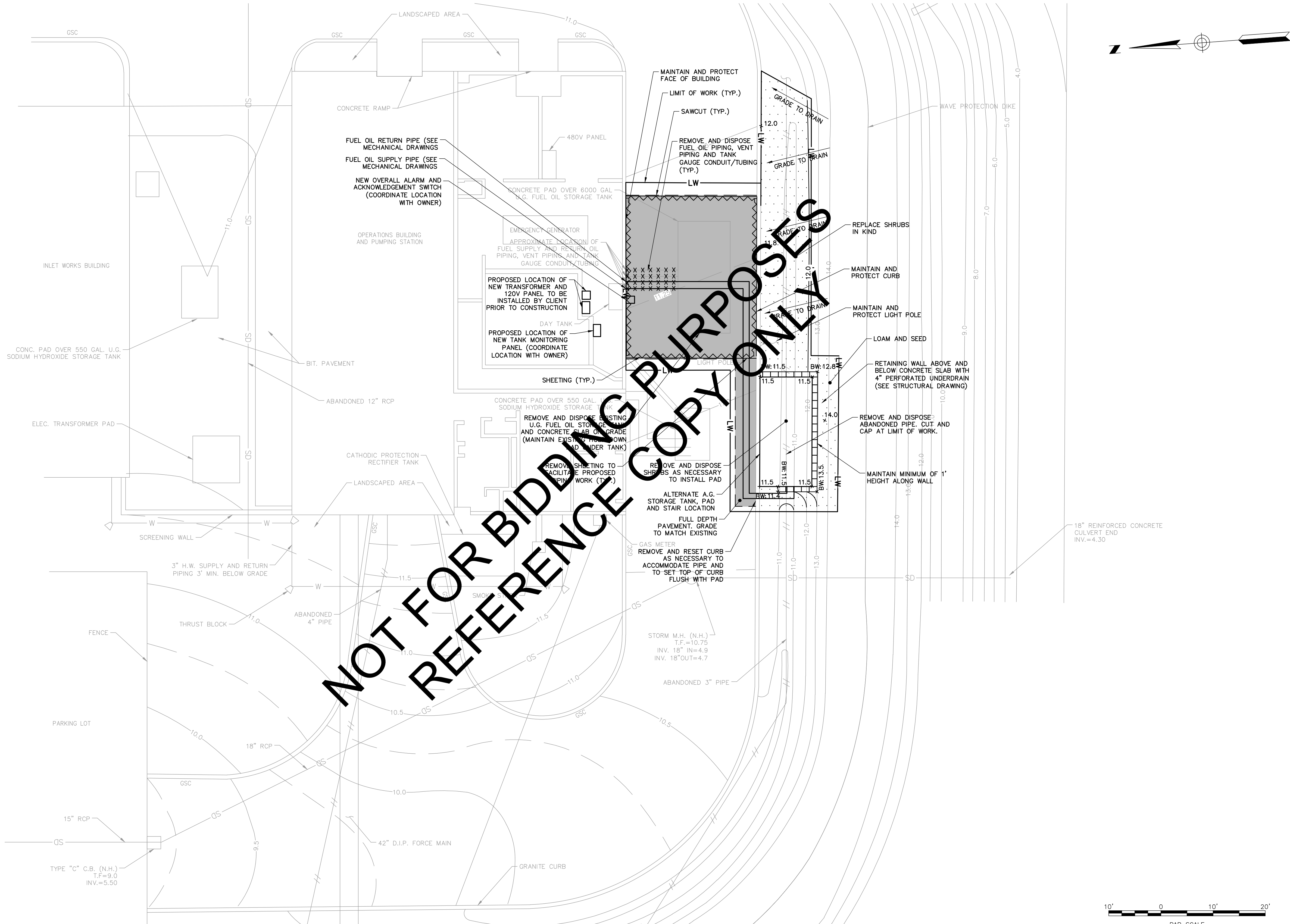
C-102

REV	DESCRIPTION	DATE
DESIGNED BY: BS		CHECKED BY: MAP

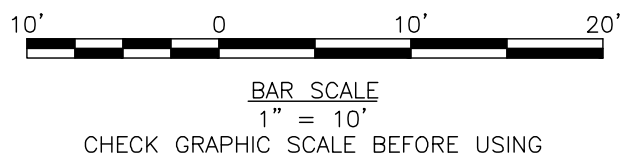
[illegible]

COMMITMENT & INTELLIGENT DRIVE RESULTS

COMMITMENT & INTELLIGENT DRIVE RESULTS



NOTES:
1. CONFIRM LOCATION AND RELOCATE SUBSURFACE ELECTRIC LINE AS NECESSARY TO FACILITATE WORK.



ISSUE FOR BID

980 Washington Street, Suite 325
Dedham, Massachusetts 02026
800.446.5518 | www.woodardcurran.com

WOODARD & CURRAN

COMMITMENT & INTEGRITY DRIVE RESULTS

THIS DOCUMENT IS THE PROPERTY OF WOODARD & CURRAN, INC. AND ITS CLIENT. REPRODUCTION OR MODIFICATION WITHOUT WRITTEN PERMISSION IS PROHIBITED.

6/19/2015

REV.	DESCRIPTION	DATE

DESIGNED BY: BS

DRAWN BY: ASM

CHECKED BY: MAP

223133.07 SITE CIVIL PLANNING

SITE PREPARATION, DEMOLITION, LAYOUT AND GRADING PLAN FOR ALTERNATIVE WORK

GREATER NEW HAVEN WATER POLLUTION CONTROL AUTHORITY

EAST STREET PUMP STATION FUEL STORAGE TANK REPLACEMENT

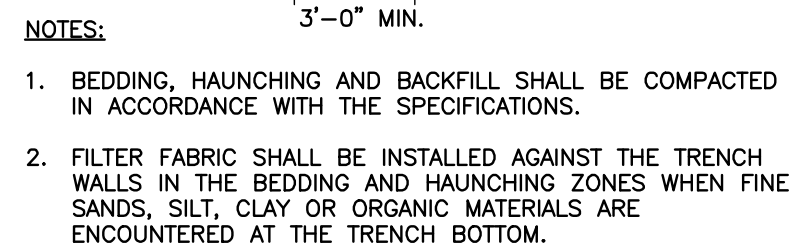
JOB NO.: 223133.07

DATE: MAY 2015

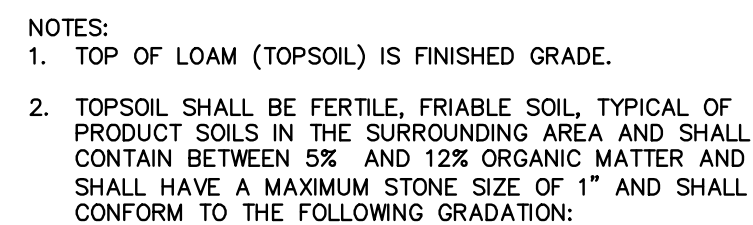
SCALE: 1" = 10'

SHEET: 5 OF 11

C-103



NOT TO SCALE



<u>SIEVE</u>	<u>% PASSING</u>
1"	100
NO. 4	85-100
NO. 40	60-85
NO. 100	38-60
NO. 200	28-40

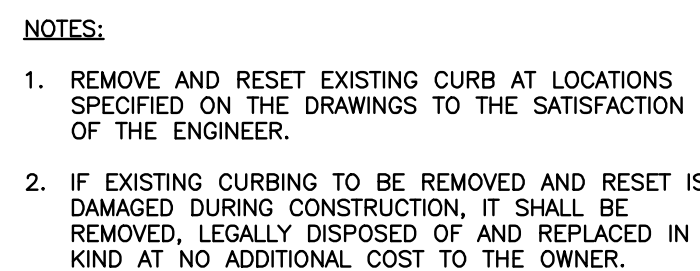
NOT TO SCALE



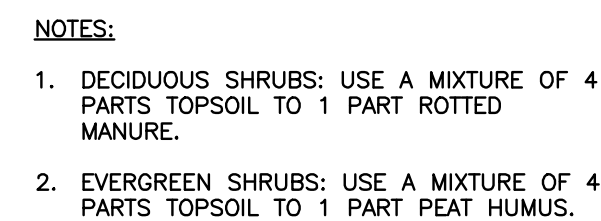
NOT TO SCALE



NOT TO SCALE



NOT TO SCALE



NOT TO SCALE

[illegible]

SITE CIVIL DETAILS

GREATER NEW HAVEN WATER
POLLUTION CONTROL AUTHORITY

EAST STREET PUMP STATION
FUEL STORAGE TANK REPLACEMENT

JOB NO: 223133.07

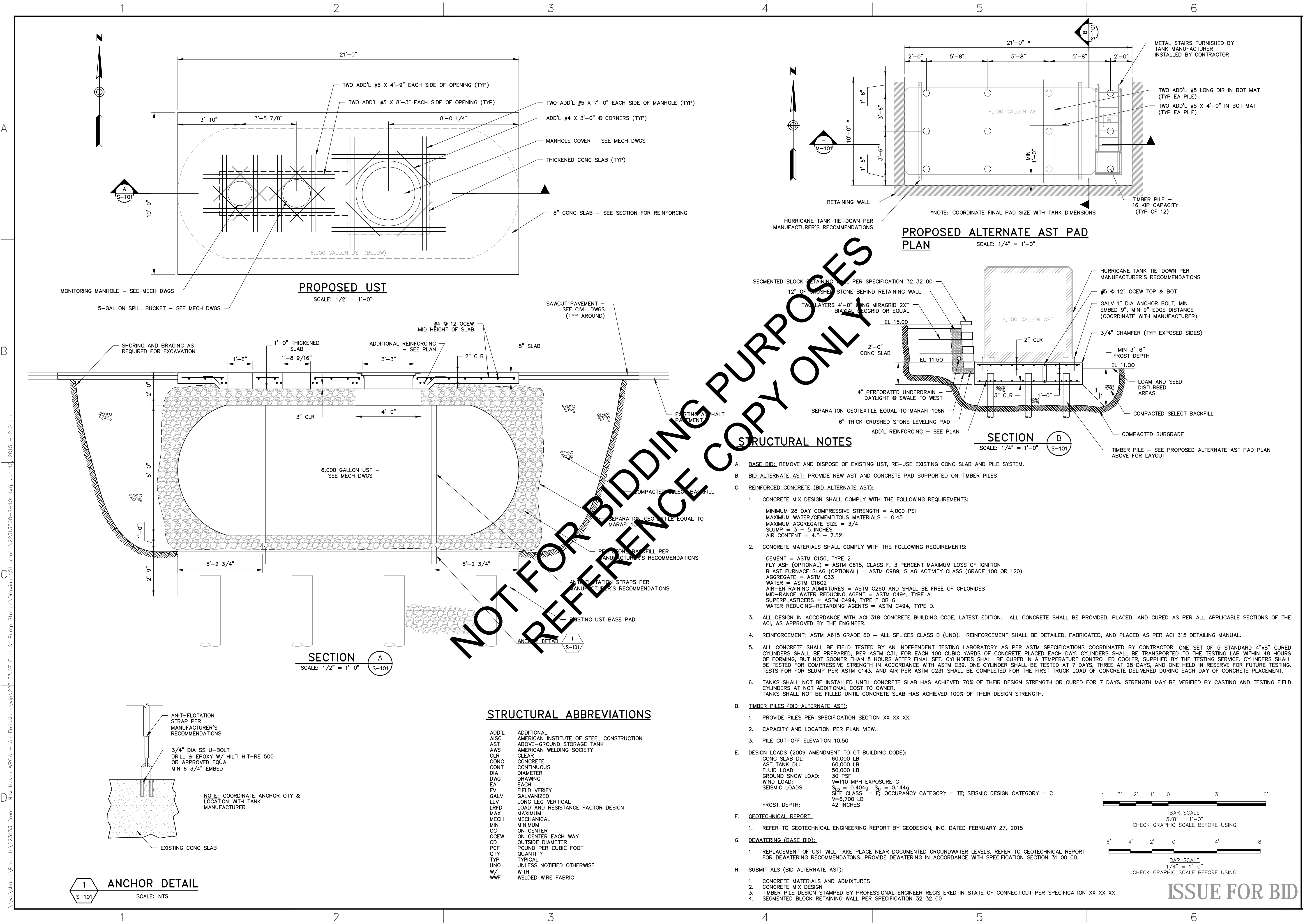
DATE: MAY 2015

SCALE: N/A

SHEET: 6 OF 11

ISSUE FOR BID

C-201



980 Washington Street, Suite 325
Dedham, Massachusetts 02026
800.446.5518 | www.woodardcurran.com

**WOODARD
& CURRAN**

COMMITMENT & INTEGRITY DRIVE RESULTS
REPRODUCTION OR MODIFICATION WITHOUT WRITTEN PERMISSION IS PROHIBITED.

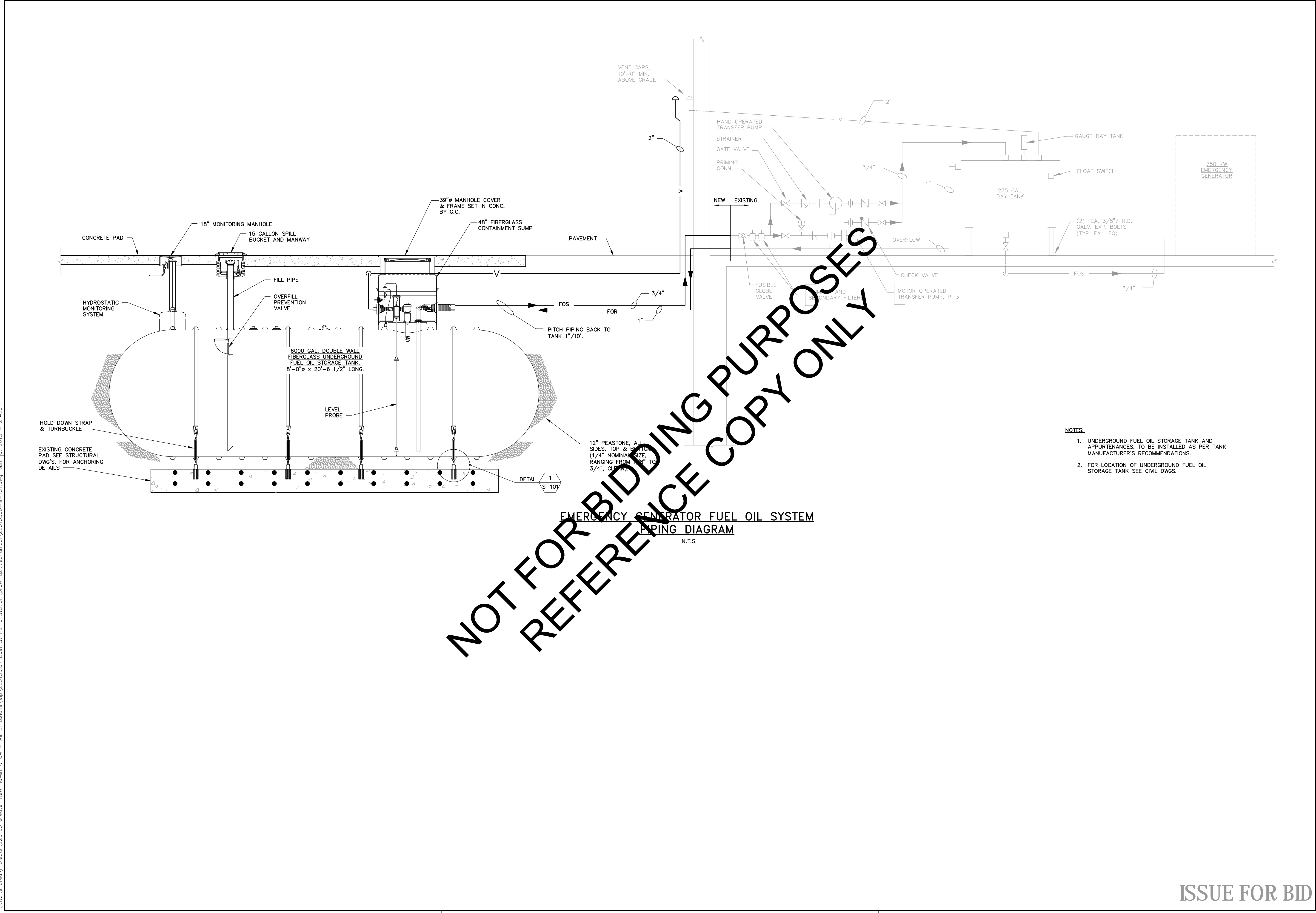
DESIGNED BY: SUT
CHECKED BY: SMH
DRAWN BY: DMB
DATE: 6/9/15
JOB NO.: 223133.07
DATE: MAY 2015
SCALE: AS NOTED
SHEET: 7 OF 11

GREATER NEW HAVEN WATER
POLLUTION CONTROL AUTHORITY

EAST STREET PUMP STATION
FUEL STORAGE TANK REPLACEMENT

S-101

1
2
3
4
5
6
A
B
C
D



- NOTES:
- 1. UNDERGROUND FUEL OIL STORAGE TANK AND APPURTENANCES, TO BE INSTALLED AS PER TANK MANUFACTURER'S RECOMMENDATIONS.
 - 2. FOR LOCATION OF UNDERGROUND FUEL OIL STORAGE TANK SEE CIVIL DWGS.

NOT FOR BIDDING PURPOSES
REFERENCE COPY ONLY

EMERGENCY GENERATOR FUEL OIL SYSTEM
PIPING DIAGRAM
N.T.S.

980 Washington Street, Suite 325
Dorham, Massachusetts 02026
800.446.5518 | www.woodardcurran.com

**WOODARD
& CURRAN**

WOODARD & CURRAN
COMMITMENT & INTEGRITY DRIVE RESULTS
WOODARD & CURRAN IS AN EQUAL OPPORTUNITY EMPLOYER. REPRODUCTION OF THIS DRAWING WITHOUT WRITTEN PERMISSION IS PROHIBITED.

REV	DESCRIPTION	DATE
0	ISSUE FOR BID	6/9/15

DESIGNED BY: BRS	CHECKED BY: BRS
DRAWN BY: JAR	22313300-M-101.DWG

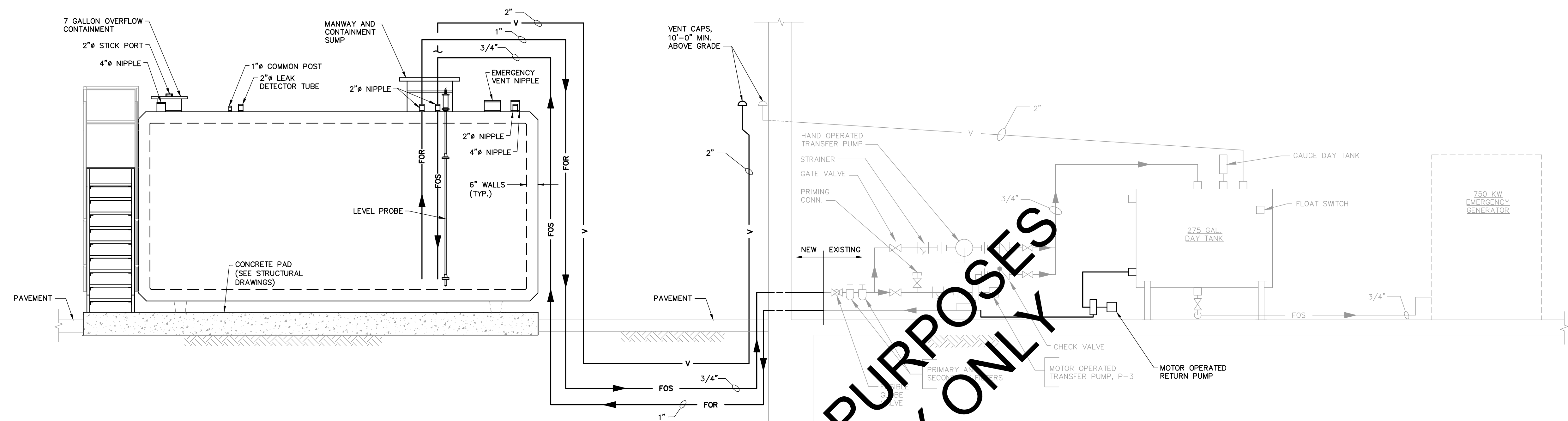
UNDERGROUND STORAGE TANK
(BASE BID)

GREATER NEW HAVEN WATER
POLLUTION CONTROL AUTHORITY

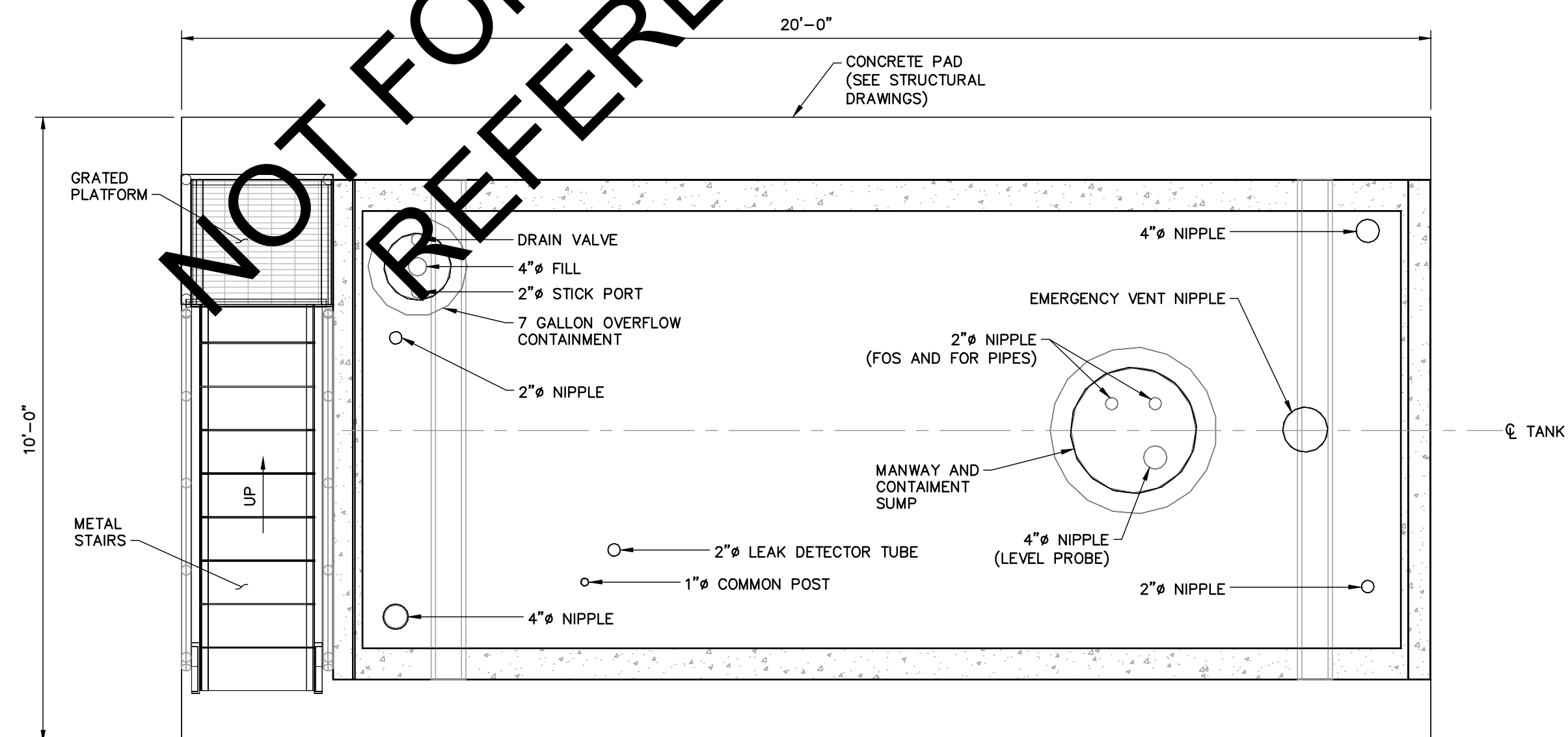
EAST STREET PUMP STATION
FUEL STORAGE TANK REPLACEMENT

JOB NO.: 223133.07
DATE: MAY 2015
SCALE: AS NOTED
SHEET: 8 OF 11

M-101

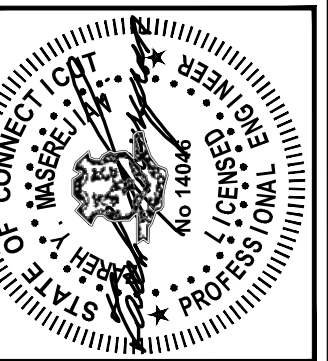


CONVAULT STORAGE TANK (6,000 GALLON)
PIPING DIAGRAM
NOT TO SCALE



PLAN
CONVAULT STORAGE TANK (6,000 GALLON)
SCALE: 1/2" = 1'-0"

- NOTES:
1. ABOVEGROUND FUEL OIL STORAGE TANK AND APPURTENANCES, TO BE INSTALLED AS PER TANK MANUFACTURER'S RECOMMENDATIONS.
 2. FOR LOCATION OF ABOVEGROUND FUEL OIL STORAGE TANK SEE CIVIL DWGS.

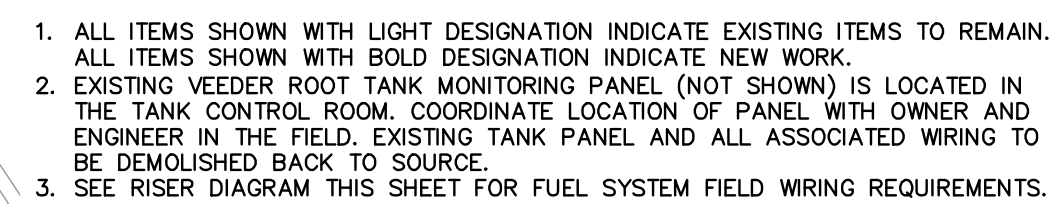
[illegible]

STRUCTURAL PLANS AND SECTIONS

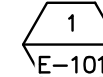
POLLUTION CONTROL AUTHORITY

FUEL STORAGE TANK REPLACEMENT

JOB NO.: 223133.07
DATE: MAY 2015
SCALE: NO SCALE
SHEET: 10 OF 11
E-001



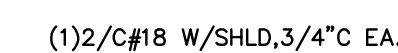
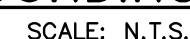
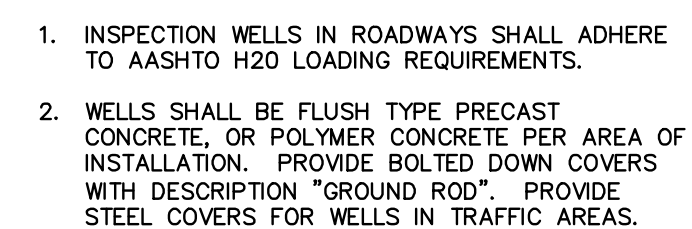
1. VEEDER ROOT TANK MONITORING PANEL TO BE INSTALLED IN THE TANK CONTROL ROOM. COORDINATE LOCATION OF PANEL WITH OWNER AND ENGINEER IN THE FIELD. REFER TO THE MANUFACTURER'S INSTALLATION/OPERATION MANUAL FOR ALL REQUIRED ELECTRICAL CONNECTIONS AND INSTALLATION PROCEDURES.
2. CONDUIT ROUTES ARE SHOWN DIAGRAMMATICALLY ONLY. COORDINATE FINAL DUCTBANK ROUTING WITH OWNER AND ENGINEER IN FIELD. SEE CIVIL SHEET C-101 FOR EXISTING UNDERGROUND UTILITIES.
3. COORDINATE FINAL REMOTE OVERFILL ALARM & ACKNOWLEDGMENT SWITCH LOCATION WITH OWNER IN THE FIELD.



SCALE: 1"=10'

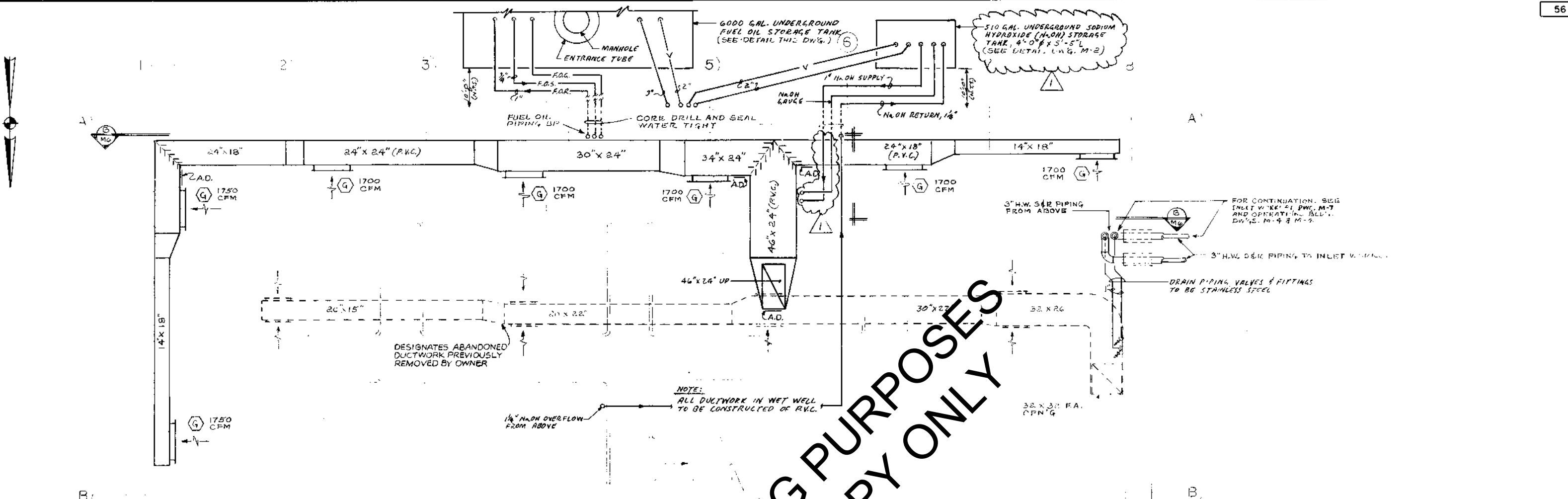


SCALE: N.T.S.



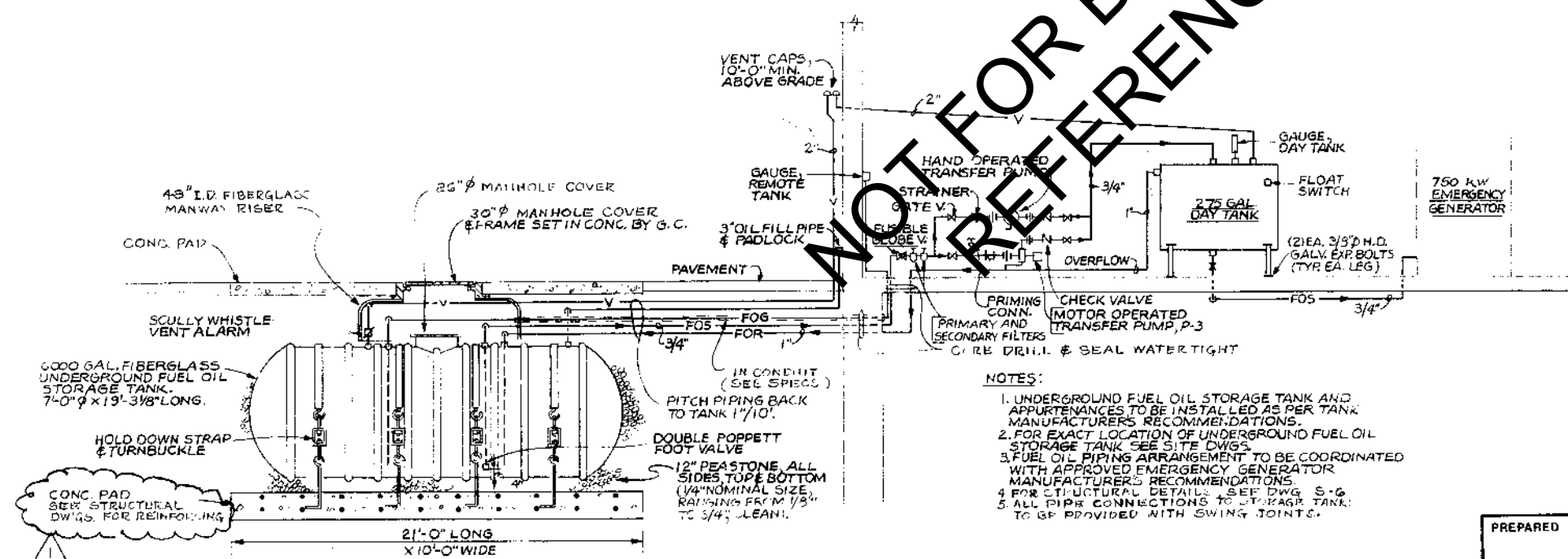
SCALE: N.T.S

E-101



PARTIAL PLAN AT ELEV. 2.500'

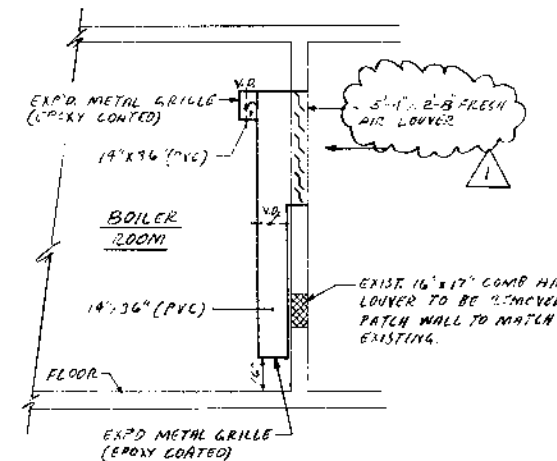
SCALE: 1/4" = 1'-0"



EMERGENCY GENERATOR FUEL OIL SYSTEM PIPING DIAGRAM

NO SCALE

REFERENCE DRAWING

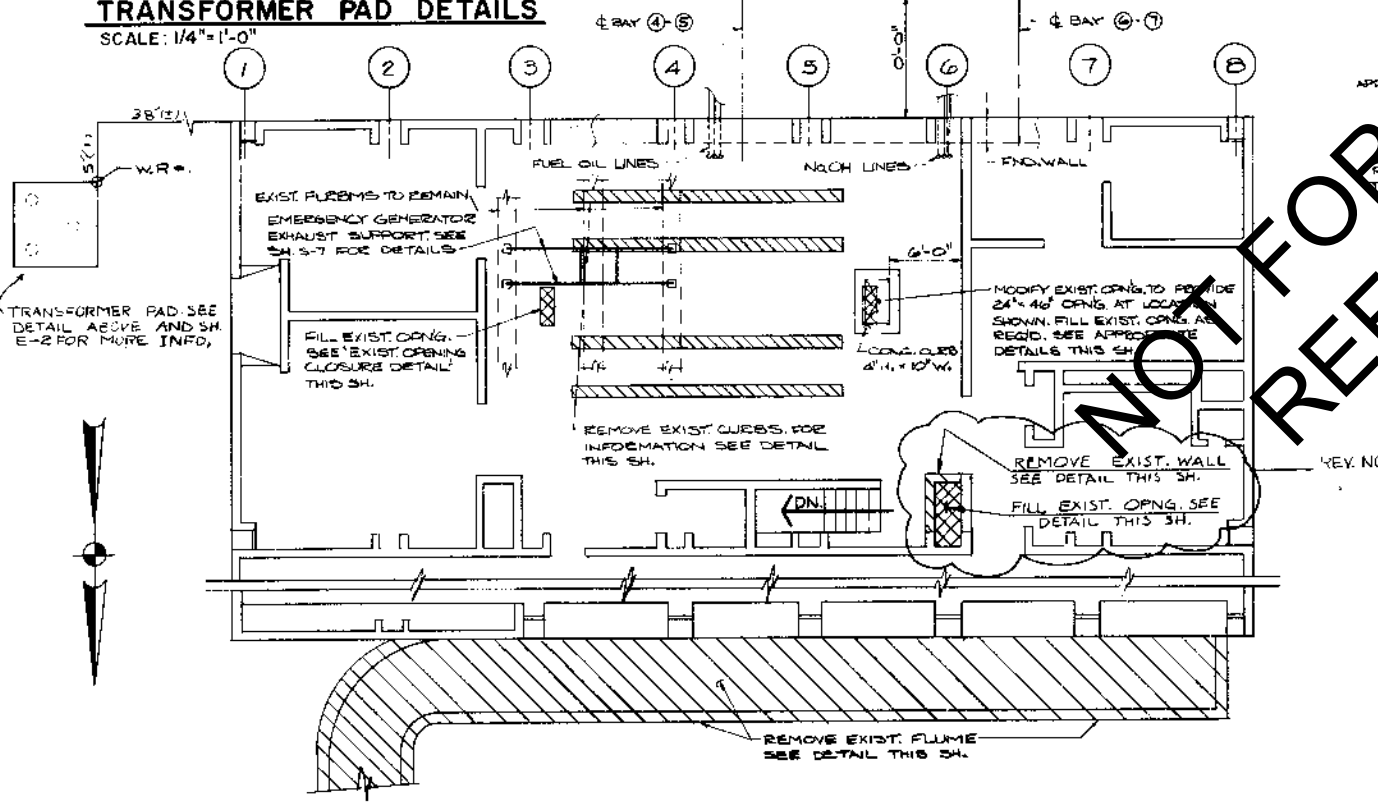
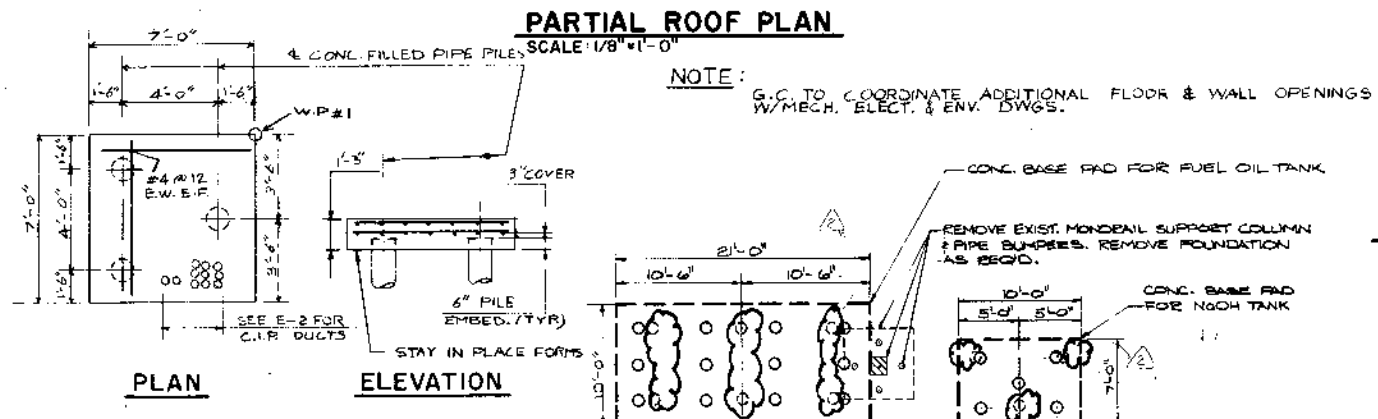
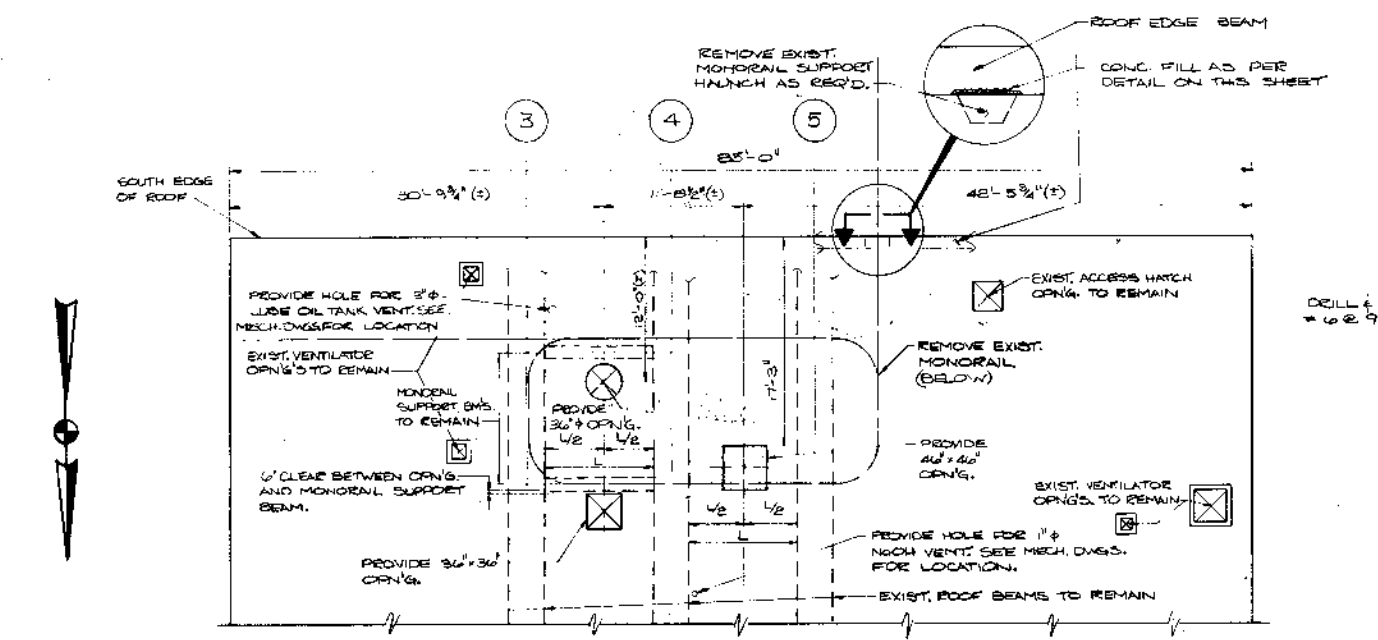


SECTION A-A

SCALE: 1/4" = 1'-0"

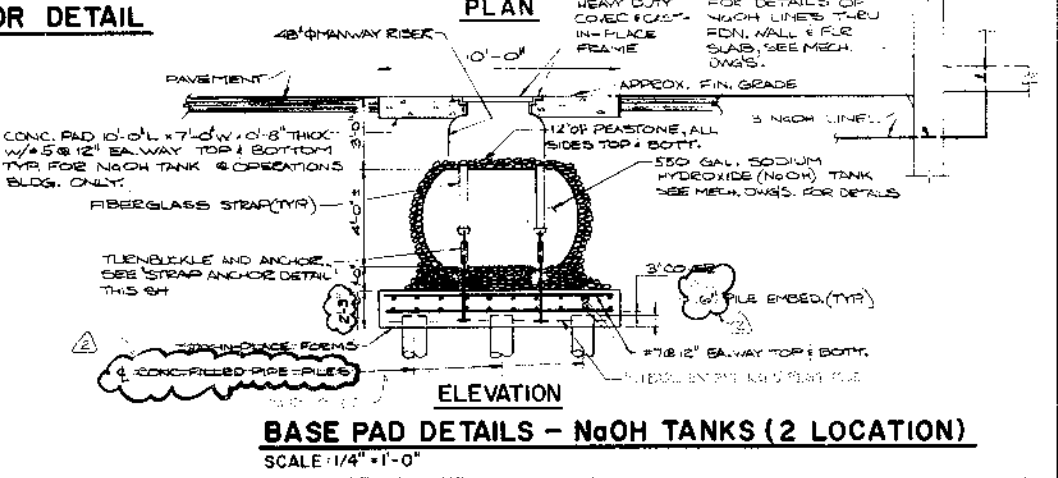
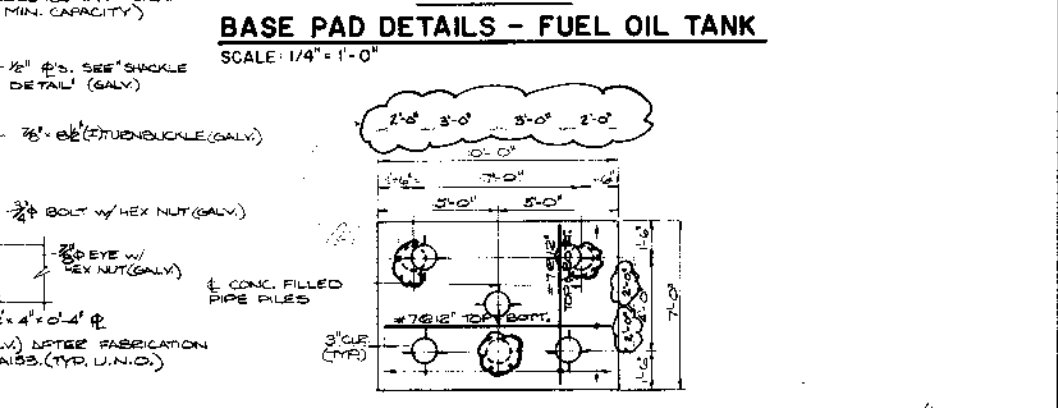
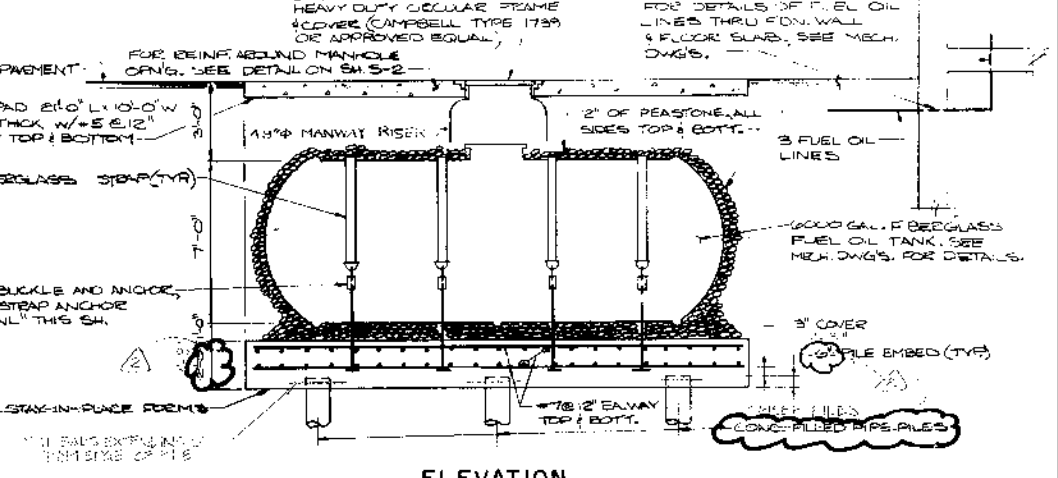
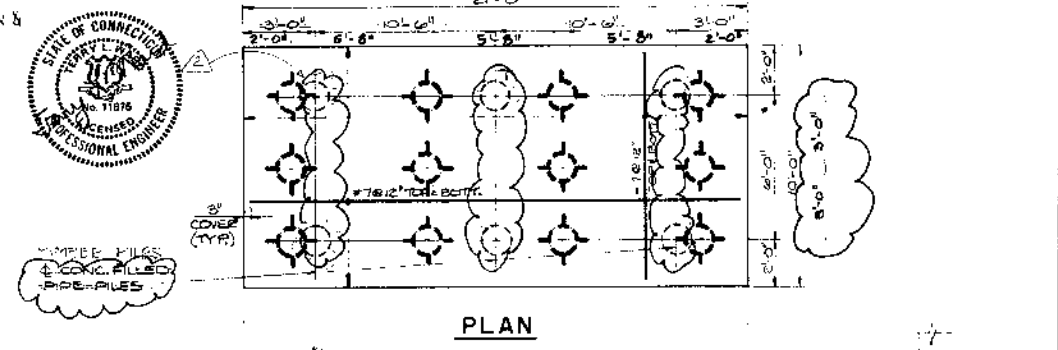
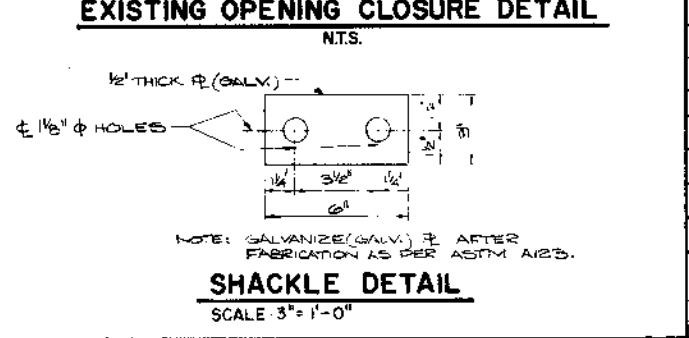
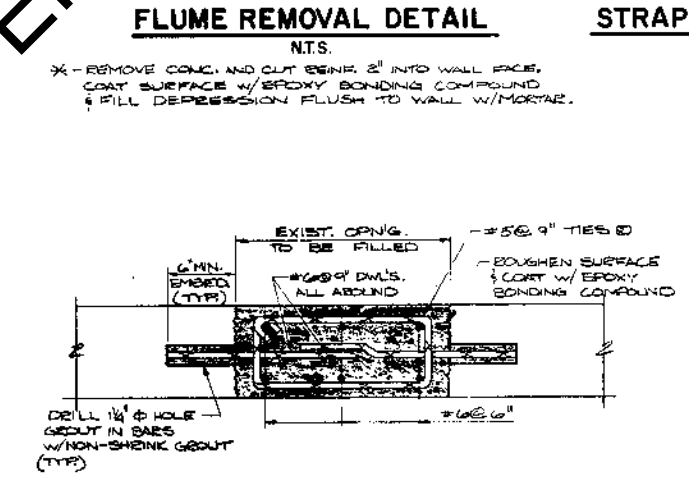
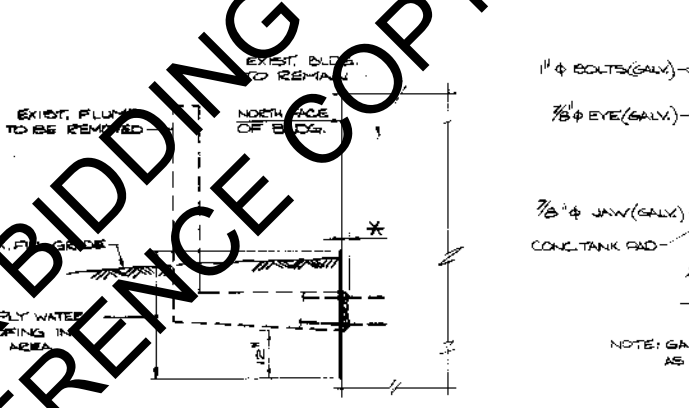
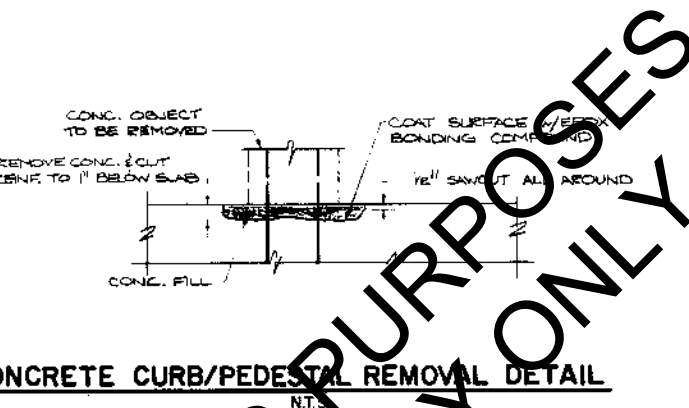
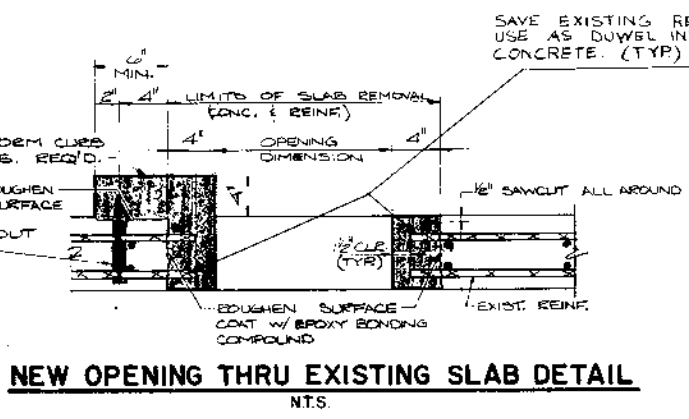


PREPARED BY:		DATE: 3/30/83		BY: R.D.		ADDENDUM NO. 2	
REV. NO.	DATE	MADE BY	CHECKED BY	DESCRIPTION			
DESIGNED BY:	R.D.		SCALE:		AS NOTED		
DRAWN BY:	C.A.		CONTRACT NO. 1		CEM NO. 3940		
CHECKED BY:	P.T.B.		APPROVED FOR CEM:		FEB. 1, 1983		
REG. PROF. ENG.		GATE					
CITY OF NEW HAVEN, CONNECTICUT BUREAU OF ENGINEERING BOULEVARD-EAST STREET WATER POLLUTION ABATEMENT PROJECT PROJECT NO. 79-154-41							
EAST STREET PUMP STATION OPERATIONS BUILDING MODIFICATIONS MECHANICAL PLAN & DETAILS							
MAGUIRE Engineers - Planners CE MAGUIRE, INC. New Britain, Connecticut							



NOTE
FOR APPLICABLE NOTES AND TYPICAL DETAILS, SEE DWG. NO. S-1, S-2 & S-3.

REFERENCE DRAWING



CITY OF NEW HAVEN, CONNECTICUT BUREAU OF ENGINEERING BOULEVARD - EAST STREET WATER POLLUTION ABATEMENT PROJECT PROJECT NO. 79-154-41			
EAST STREET PUMP STATION OPERATIONS BUILDING STRUCTURAL - PLANS AND DETAILS			
MAGUIRE Engineers - Planners CE MAGUIRE, INC.			
New Britain, Connecticut			
2 1 3/30/83 P.B. H.M.P. AS EXIST. REVISIONS ADDENDUM NO. 2	REV. NO. DATE MADE BY CHECKED BY CONTRACT NO. 1 APPROVED FOR CEM	SCALE AS SHOWN CEM NO. 3940 2/1/83 DATE	STATE OF CONNECTICUT REGISTERED PROFESSIONAL ENGINEER NO. 0136