



ADDENDUM NO. 2

Greater New Haven Water Pollution Control Authority

2018 Manhole Rehabilitation Project No. SSR 2018-08

TO: ALL PLAN HOLDERS
DATE: November 2, 2018

This addendum shall be attached to the Contract Documents of Project No. SSR 2018-08. Each bidder shall acknowledge receipt of this Addendum by entering the Addendum number and date received in the space provided in **Section §102-20 Itemized Proposal**.

The Specifications and Contract Documents are hereby modified as follows:

1. Bidder's Checklist

All Contractors shall submit with their bid a copy of the manufacturer's technical data of the proposed manhole rehabilitation lining system they plan to use for this project.

2. Modification to Item 524M Sanitary Sewer Manhole Rehabilitation Specification

MATERIALS

I. Manhole Frame Chimney Seal Material

The Authority approves the use of Raven 581 as an equal product.

CONSTRUCTION DETAILS

H. Manhole Frame Chimney Seal

Add the following sentence to the beginning of the first paragraph:
A Manhole frame chimney seal shall be installed only on those manholes directed by the Engineer, if any.

3. Modifications to Appendix B. Prevailing Wage Rates

Project SSR 2018-08 Prevailing Wage Rates are enclosed (Attachment 1).

4. GNHWPCA Standard Construction Details

Standard construction detail SD523-08 & SD523-09 are included as part of the bidding documents (Attachment 2).

Project No. SSR 2018-08 provided for questions or requests for clarification to be received in writing by the Authority through November 2, 2018 at 12:00 PM. The following is provided in response to questions received.

Questions submitted by Brett Vallow, Kim Construction Company

1. Cementitious liner - Can you verify min thickness of underlayment cement liner material?

Response: one-inch as stated on Item 524M specification.

2. Does a Secondary Corrosion Protection (Antimicrobial Liquid or Acid Mitigation System) have to be applied to the finished surface of the Geopolymer material?

Response: No.

3. Section H. Manhole Frame Chimney Seal - Section States" the minimal Coverage shall be 12 inches". Since this is per each bid item can you define what the maximum amount of height per unit shall be? Or would you consider revising this bid item to VF and the chimney liner height is paid accordingly at each required manhole?

Response: Our inspection records show that there is one frame/chimney that is 14"; and one additional that is 17". The rest are 1 foot or less. We will keep the per EACH bid item.

4. Please see attached submittal for Raven 581, can you please review as equal for chimney seal bid item??

Response: Raven 581 will be considered an approved product for Manhole Frame Chimney Seal.

Questions submitted by Kyle Rome, PIM Corporation

5. Does the Traffic Men allowance cover uniformed police officers? Are police officers required for flagging operations?

Response: Yes, in our service area ONLY Police officers perform the work of a Trafficperson. Flaggers will only be needed if requested by the police department.

6. What are the allowed work hours for the project?

Response: In our service area the allowed work hours are 7am to 7pm except on major roadways where the work hours are 9am to 4pm. Contractor must follow City of New Haven Traffic and Parking Department requirements at all times.

7. Manhole rehabilitation during the winter months is difficult bordering impossible, specifically the cleaning operations and concrete mixing in cold weather. Can the completion date be extended to late spring?

Response: Yes, the Authority will work with the low-bidder to finalize a schedule acceptable to both parties.

8. Is lining required in the manhole inverts? Bypass pumping for large diameter pipelines (over 24") significantly increases the project cost.

Response: Yes, manhole inverts are included as stated in the standard specifications. As stated in the pre-bid meeting, manholes with large diameter sewer mains are only to be rehabilitated to a depth to be determined in the field. The Authority expects the Contractor to use flow-through plugs and/or standard 2" pumps to handle temporary bypass flows. Any bypass flow that requires larger pumps are not included in the scope of work.

Questions submitted by Connor Collier, Vortex Companies

1. Will Quadex Chimney Guard be accepted as an approved chimney seal product?

Response: No, the deadline to submit "Equal Product's" technical specifications and material safety data has already passed.

Questions submitted by Hayden Malone, Vortex Companies

1. What is the contract duration?

Response: The Authority will work with the low-bidder to finalize a schedule acceptable to both parties.

2. Are all these manholes accessible?

Response: Yes.

3. What material are the existing drop connections and what material should they be replaced with? Where can I find Authority's standard construction detail SD523-08 & SD523-09?

Response: Standard construction details are attached. All manhole inside drops, existing to be replaced and new ones, shall meet the requirements of the Authority's details.

4. Do we have certain Prevailing Wage Rates guidelines we need to follow for this project? If yes, where can we find this document showcasing \$/Hr for various crew personnel?

Response: Prevailing Wage Rates are attached.

5. Vacuum tests required on 10% of MHs. Is this the contractor's responsibility to pay for or the owner? Spec does not specify.

Response: Yes, it is the Contractor's responsibility as stated in the description of Item 524M Sanitary Sewer Manhole Rehabilitation, and under Section 102-16 Special Specifications and Notes, item 3. Scope of Work.

6. Are all manholes required to have Chimney Seal?

Response: Only 51 manholes may be selected to receive a manhole frame chimney seal instead of complete manhole rehabilitation lining.

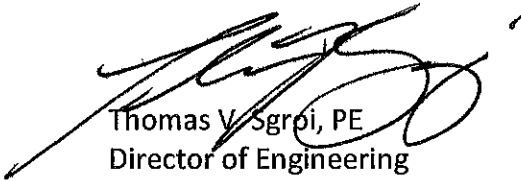
7. What does pay item "Traffic Men" include? How many men?

Response: This is a pass through cost without mark up. The bid item is an allowance.

- END OF ADDENDUM No. 2 -

ADDENDUM No. 2 ISSUED BY:

GREATER NEW HAVEN WATER POLLUTION CONTROL AUTHORITY



Thomas V. Sgrbi, PE
Director of Engineering

ATTACHMENT 1



Opportunity * Guidance * Support



THIS IS A PUBLIC WORKS PROJECT

Covered by the

PREVAILING WAGE LAW

CT General Statutes Section 31-53

**If you have QUESTIONS regarding your wages
CALL (860) 263-6790**

Section 31-55 of the CT State Statutes requires every contractor or subcontractor performing work for the state to post in a prominent place the prevailing wages as determined by the Labor Commissioner.

Project: 2018 Manhole Rehabilitation

**Minimum Rates and Classifications
for Heavy/Highway Construction**

ID#: H 25363

**Connecticut Department of Labor
Wage and Workplace Standards Division**

By virtue of the authority vested in the Labor Commissioner under provisions of Section 31-53 of the General Statutes of Connecticut, as amended, the following are declared to be the prevailing rates and welfare payments and will apply only where the contract is advertised for bid within 20 days of the date on which the rates are established. Any contractor or subcontractor not obligated by agreement to pay to the welfare and pension fund shall pay this amount to each employee as part of his/her hourly wages.

Project Number: SSR 2018-02

Project Town: New Haven

FAP Number:

State Number:

Project: 2018 Manhole Rehabilitation

CLASSIFICATION

Hourly Rate

Benefits

01) Asbestos/Toxic Waste Removal Laborers: Asbestos removal and encapsulation (except its removal from mechanical systems which are not to be scrapped), toxic waste removers, blasters. ****See Laborers Group 5 and 7****

1) Boilermaker	33.79	34% + 8.96
----------------	-------	------------

1a) Bricklayer, Cement Masons, Cement Finishers, Plasterers, Stone Masons	33.48	31.66
---	-------	-------

2) Carpenters, Piledrivermen	32.60	25.34
------------------------------	-------	-------

As of:

Monday, October 22, 2018

Project: 2018 Manhole Rehabilitation

2a) Diver Tenders	32.60	25.34
-------------------	-------	-------

3) Divers	41.06	25.34
-----------	-------	-------

03a) Millwrights	33.14	25.74
------------------	-------	-------

4) Painters: (Bridge Construction) Brush, Roller, Blasting (Sand, Water, etc.), Spray	49.75	21.05
--	-------	-------

4a) Painters: Brush and Roller	33.62	21.05
--------------------------------	-------	-------

4b) Painters: Spray Only	36.62	21.05
--------------------------	-------	-------

4c) Painters: Steel Only	35.62	21.05
--------------------------	-------	-------

As of:

Monday, October 22, 2018

Project: 2018 Manhole Rehabilitation

4d) Painters: Blast and Spray	36.62	21.05
-------------------------------	-------	-------

4e) Painters: Tanks, Tower and Swing	35.62	21.05
--------------------------------------	-------	-------

5) Electrician (Trade License required: E-1,2 L-5,6 C-5,6 T-1,2 L-1,2 V-1,2,7,8,9)	37.50	27.91+3% of gross wage
--	-------	------------------------

6) Ironworkers: Ornamental, Reinforcing, Structural, and Precast Concrete Erection	35.47	35.14 + a
--	-------	-----------

7) Plumbers (Trade License required: (P-1,2,6,7,8,9 J-1,2,3,4 SP-1,2) and Pipefitters (Including HVAC Work) (Trade License required: S-1,2,3,4,5,6,7,8 B-1,2,3,4 D-1,2,3,4 G-1, G-2, G-8, G-9)	42.62	31.21
--	-------	-------

---LABORERS----

8) Group 1: Laborer (Unskilled), Common or General, acetylene burner, concrete specialist	30.05	20.10
---	-------	-------

Project: 2018 Manhole Rehabilitation

9) Group 2: Chain saw operators, fence and guard rail erectors, pneumatic tool operators, powdermen	30.30	20.10
<hr/>		
10) Group 3: Pipelayers	30.55	20.10
<hr/>		
11) Group 4: Jackhammer/Pavement breaker (handheld); mason tenders (cement/concrete), catch basin builders, asphalt rakers, air track operators, block paver, curb setter and forklift operators	30.55	20.10
<hr/>		
12) Group 5: Toxic waste removal (non-mechanical systems)	32.05	20.10
<hr/>		
13) Group 6: Blasters	31.80	20.10
<hr/>		
Group 7: Asbestos/lead removal, non-mechanical systems (does not include leaded joint pipe)	31.05	20.10
<hr/>		
Group 8: Traffic control signalmen	16.00	20.10
<hr/>		

As of:

Monday, October 22, 2018

Project: 2018 Manhole Rehabilitation

Group 9: Hydraulic Drills	29.30	18.90
---------------------------	-------	-------

---LABORERS (TUNNEL CONSTRUCTION, FREE AIR). Shield Drive and
Liner Plate Tunnels in Free Air.---

13a) Miners, Motormen, Mucking Machine Operators, Nozzle Men, Grout Men, Shaft & Tunnel Steel & Rodmen, Shield & Erector, Arm Operator, Cable Tenders	32.22	20.10 + a
---	-------	-----------

13b) Brakemen, Trackmen	31.28	20.10 + a
-------------------------	-------	-----------

---CLEANING, CONCRETE AND CAULKING TUNNEL---

14) Concrete Workers, Form Movers, and Strippers	31.28	20.10 + a
--	-------	-----------

15) Form Erectors	31.60	20.10 + a
-------------------	-------	-----------

Project: 2018 Manhole Rehabilitation

---ROCK SHAFT LINING, CONCRETE, LINING OF SAME AND TUNNEL
IN FREE AIR:----

16) Brakemen, Trackmen, Tunnel Laborers, Shaft Laborers	31.28	20.10 + a
---	-------	-----------

17) Laborers Topside, Cage Tenders, Bellman	31.17	20.10 + a
---	-------	-----------

18) Miners	32.22	20.10 + a
------------	-------	-----------

---TUNNELS, CAISSON AND CYLINDER WORK IN COMPRESSED
AIR: ----

18a) Blaster	38.53	20.10 + a
--------------	-------	-----------

19) Brakemen, Trackmen, Groutman, Laborers, Outside Lock Tender, Gauge Tenders	38.34	20.10 + a
---	-------	-----------

As of: Monday, October 22, 2018

Project: 2018 Manhole Rehabilitation

20) Change House Attendants, Powder Watchmen, Top on Iron Bolts	36.41	20.10 + a
---	-------	-----------

21) Mucking Machine Operator	39.11	20.10 + a
------------------------------	-------	-----------

---TRUCK DRIVERS---(*see note below)

Two axle trucks	29.13	23.33 + a
-----------------	-------	-----------

Three axle trucks; two axle ready mix	29.23	23.33 + a
---------------------------------------	-------	-----------

Three axle ready mix	29.28	23.33 + a
----------------------	-------	-----------

Four axle trucks, heavy duty trailer (up to 40 tons)	29.33	23.33 + a
--	-------	-----------

As of:

Monday, October 22, 2018

Project: 2018 Manhole Rehabilitation

Four axle ready-mix	29.38	23.33 + a
<hr/>		
Heavy duty trailer (40 tons and over)	29.58	23.33 + a
<hr/>		
Specialized earth moving equipment other than conventional type on-the road trucks and semi-trailer (including Euclids)	29.38	23.33 + a
<hr/>		
---POWER EQUIPMENT OPERATORS---		
<hr/>		
Group 1: Crane handling or erecting structural steel or stone, hoisting engineer (2 drums or over), front end loader (7 cubic yards or over), Work Boat 26 ft. & Over, Tunnel Boring Machines. (Trade License Required)	39.55	24.05 + a
<hr/>		
Group 2: Cranes (100 ton rate capacity and over); Excavator over 2 cubic yards; Piledriver (\$3.00 premium when operator controls hammer); Bauer Drill/Caisson. (Trade License Required)	39.23	24.05 + a
<hr/>		
Group 3: Excavator/Backhoe under 2 cubic yards; Cranes (under 100 ton rated capacity), Gradall; Master Mechanic; Hoisting Engineer (all types of equipment where a drum and cable are used to hoist or drag material regardless of motive power of operation), Rubber Tire Excavator (Drott-1085 or similar); Grader Operator; Bulldozer Fine Grade (slopes, shaping, laser or GPS, etc.). (Trade License Required)	38.49	24.05 + a
<hr/>		

As of:

Monday, October 22, 2018

Project: 2018 Manhole Rehabilitation

Group 4: Trenching Machines; Lighter Derrick; Concrete Finishing Machine; CMI Machine or Similar; Koehring Loader (Skooper)	38.10	24.05 + a
---	-------	-----------

Group 5: Specialty Railroad Equipment; Asphalt Paver; Asphalt Spreader; Asphalt Reclaiming Machine; Line Grinder; Concrete Pumps; Drills with Self Contained Power Units; Boring Machine; Post Hole Digger; Auger; Pounder; Well Digger; Milling Machine (over 24" Mandrell)	37.51	24.05 + a
--	-------	-----------

Group 5 continued: Side Boom; Combination Hoe and Loader; Directional Driller.	37.51	24.05 + a
--	-------	-----------

Group 6: Front End Loader (3 up to 7 cubic yards); Bulldozer (rough grade dozer).	37.20	24.05 + a
---	-------	-----------

Group 7: Asphalt Roller; Concrete Saws and Cutters (ride on types); Vermeer Concrete Cutter; Stump Grinder; Scraper; Snooper; Skidder; Milling Machine (24" and Under Mandrel).	36.86	24.05 + a
---	-------	-----------

Group 8: Mechanic, Grease Truck Operator, Hydroblaster, Barrier Mover, Power Stone Spreader; Welder; Work Boat under 26 ft.; Transfer Machine.	36.46	24.05 + a
--	-------	-----------

Group 9: Front End Loader (under 3 cubic yards), Skid Steer Loader regardless of attachments (Bobcat or Similar); Fork Lift, Power Chipper; Landscape Equipment (including hydroseeder).	36.03	24.05 + a
--	-------	-----------

Project: 2018 Manhole Rehabilitation

Group 10: Vibratory Hammer, Ice Machine, Diesel and Air Hammer, etc. 33.99 24.05 + a

Group 11: Conveyor, Earth Roller; Power Pavement Breaker (whiphammer), Robot Demolition Equipment. 33.99 24.05 + a

Group 12: Wellpoint Operator. 33.93 24.05 + a

Group 13: Compressor Battery Operator. 33.35 24.05 + a

Group 14: Elevator Operator; Tow Motor Operator (Solid Tire No Rough Terrain). 32.21 24.05 + a

Group 15: Generator Operator; Compressor Operator; Pump Operator; Welding Machine Operator; Heater Operator. 31.80 24.05 + a

Group 16: Maintenance Engineer/Oiler 31.15 24.05 + a

Project: 2018 Manhole Rehabilitation

Group 17: Portable asphalt plant operator; portable crusher plant operator; portable concrete plant operator.	35.46	24.05 + a
---	-------	-----------

Group 18: Power Safety Boat; Vacuum Truck; Zim Mixer; Sweeper; (minimum for any job requiring CDL license).	33.04	24.05 + a
---	-------	-----------

**NOTE: SEE BELOW

---LINE CONSTRUCTION---(Railroad Construction and Maintenance)---

20) Lineman, Cable Splicer, Technician	48.19	6.5% + 22.00
--	-------	--------------

21) Heavy Equipment Operator	42.26	6.5% + 19.88
------------------------------	-------	--------------

22) Equipment Operator, Tractor Trailer Driver, Material Men	40.96	6.5% + 19.21
--	-------	--------------

Project: 2018 Manhole Rehabilitation

23) Driver Groundmen	26.50	6.5% + 9.00
----------------------	-------	-------------

23a) Truck Driver	40.96	6.5% + 17.76
-------------------	-------	--------------

---LINE CONSTRUCTION---

24) Driver Groundmen	30.92	6.5% + 9.70
----------------------	-------	-------------

25) Groundmen	22.67	6.5% + 6.20
---------------	-------	-------------

26) Heavy Equipment Operators	37.10	6.5% + 10.70
-------------------------------	-------	--------------

27) Linemen, Cable Splicers, Dynamite Men	41.22	6.5% + 12.20
---	-------	--------------

Project: 2018 Manhole Rehabilitation

28) Material Men, Tractor Trailer Drivers, Equipment Operators

35.04

6.5% + 10.45

As of:

Monday, October 22, 2018

Project: 2018 Manhole Rehabilitation

Welders: Rate for craft to which welding is incidental.

**Note: Hazardous waste removal work receives additional \$1.25 per hour for truck drivers.*

***Note: Hazardous waste premium \$3.00 per hour over classified rate*

ALL Cranes: When crane operator is operating equipment that requires a fully licensed crane operator to operate he receives an extra \$4.00 premium in addition to the hourly wage rate and benefit contributions:

1) Crane handling or erecting structural steel or stone; hoisting engineer (2 drums or over)

2) Cranes (100 ton rate capacity and over) Bauer Drill/Caisson

3) Cranes (under 100 ton rated capacity)

Crane with 150 ft. boom (including jib) - \$1.50 extra

Crane with 200 ft. boom (including jib) - \$2.50 extra

Crane with 250 ft. boom (including jib) - \$5.00 extra

Crane with 300 ft. boom (including jib) - \$7.00 extra

Crane with 400 ft. boom (including jib) - \$10.00 extra

All classifications that indicate a percentage of the fringe benefits must be calculated at the percentage rate times the "base hourly rate".

Apprentices duly registered under the Commissioner of Labor's regulations on "Work Training Standards for Apprenticeship and Training Programs" Section 31-51-d-1 to 12, are allowed to be paid the appropriate percentage of the prevailing journeymen hourly base and the full fringe benefit rate, providing the work site ratio shall not be less than one full-time journeyman instructing and supervising the work of each apprentice in a specific trade.

~~Connecticut General Statute Section 31-55a: Annual Adjustments to wage rates by contractors doing state work ~~

The Prevailing wage rates applicable to this project are subject to annual adjustments each July 1st for the duration of the project.

Each contractor shall pay the annual adjusted prevailing wage rate that is in effect each July 1st, as posted by the Department of Labor.

It is the contractor's responsibility to obtain the annual adjusted prevailing wage rate increases directly from the Department of Labor's website.

The annual adjustments will be posted on the Department of Labor's Web page: www.ct.gov/dol.

The Department of Labor will continue to issue the initial prevailing wage rate schedule to the Contracting Agency for the project.

All subsequent annual adjustments will be posted on our Web Site for contractor access.

Contracting Agencies are under no obligation pursuant to State labor law to pay any increase due to the annual adjustment provision.

As of: Monday, October 22, 2018

Project: 2018 Manhole Rehabilitation

Effective October 1, 2005 - Public Act 05-50: any person performing the work of any mechanic, laborer, or worker shall be paid prevailing wage

All Person who perform work ON SITE must be paid prevailing wage for the appropriate mechanic, laborer, or worker classification.

All certified payrolls must list the hours worked and wages paid to All Persons who perform work ON SITE regardless of their ownership i.e.: (Owners, Corporate Officers, LLC Members, Independent Contractors, et. al)

Reporting and payment of wages is required regardless of any contractual relationship alleged to exist between the contractor and such person.

~~Unlisted classifications needed for work not included within the scope of the classifications listed may be added after award only as provided in the labor standards contract clause (29 CFR 5.5 (a) (1) (ii)).

Please direct any questions which you may have pertaining to classification of work and payment of prevailing wages to the Wage and Workplace Standards Division, telephone (860)263-6790.

As of:

Monday, October 22, 2018

Project: 2018 Manhole Rehabilitation

**Minimum Rates and Classifications
for Heavy/Highway Construction**

ID#: H 25364

**Connecticut Department of Labor
Wage and Workplace Standards Division**

By virtue of the authority vested in the Labor Commissioner under provisions of Section 31-53 of the General Statutes of Connecticut, as amended, the following are declared to be the prevailing rates and welfare payments and will apply only where the contract is advertised for bid within 20 days of the date on which the rates are established. Any contractor or subcontractor not obligated by agreement to pay to the welfare and pension fund shall pay this amount to each employee as part of his/her hourly wages.

Project Number: SSR 2018-08

Project Town: Hamden

FAP Number:

State Number:

Project: 2018 Manhole Rehabilitation

CLASSIFICATION

Hourly Rate

Benefits

01) Asbestos/Toxic Waste Removal Laborers: Asbestos removal and encapsulation (except its removal from mechanical systems which are not to be scrapped), toxic waste removers, blasters. ****See Laborers Group 5 and 7****

1) Boilermaker	33.79	34% + 8.96
----------------	-------	------------

1a) Bricklayer, Cement Masons, Cement Finishers, Plasterers, Stone Masons	33.48	31.66
---	-------	-------

2) Carpenters, Piledrivermen	32.60	25.34
------------------------------	-------	-------

As of:

Monday, October 22, 2018

Project: 2018 Manhole Rehabilitation

2a) Diver Tenders	32.60	25.34
-------------------	-------	-------

3) Divers	41.06	25.34
-----------	-------	-------

03a) Millwrights	33.14	25.74
------------------	-------	-------

4) Painters: (Bridge Construction) Brush, Roller, Blasting (Sand, Water, etc.), Spray	49.75	21.05
--	-------	-------

4a) Painters: Brush and Roller	33.62	21.05
--------------------------------	-------	-------

4b) Painters: Spray Only	36.62	21.05
--------------------------	-------	-------

4c) Painters: Steel Only	35.62	21.05
--------------------------	-------	-------

As of:

Monday, October 22, 2018

Project: 2018 Manhole Rehabilitation

4d) Painters: Blast and Spray 36.62 21.05

4e) Painters: Tanks, Tower and Swing 35.62 21.05

5) Electrician (Trade License required: E-1,2 L-5,6 C-5,6 T-1,2 L-1,2 V-1,2,7,8,9) 37.50 27.91+3% of gross wage

6) Ironworkers: Ornamental, Reinforcing, Structural, and Precast Concrete Erection 35.47 35.14 + a

7) Plumbers (Trade License required: (P-1,2,6,7,8,9 J-1,2,3,4 SP-1,2) and Pipefitters (Including HVAC Work) (Trade License required: S-1,2,3,4,5,6,7,8 B-1,2,3,4 D-1,2,3,4 G-1, G-2, G-8, G-9) 42.62 31.21

---LABORERS----

8) Group 1: Laborer (Unskilled), Common or General, acetylene burner, concrete specialist 30.05 20.10

Project: 2018 Manhole Rehabilitation

9) Group 2: Chain saw operators, fence and guard rail erectors, pneumatic tool operators, powdermen	30.30	20.10
<hr/>		
10) Group 3: Pipelayers	30.55	20.10
<hr/>		
11) Group 4: Jackhammer/Pavement breaker (handheld); mason tenders (cement/concrete), catch basin builders, asphalt rakers, air track operators, block paver, curb setter and forklift operators	30.55	20.10
<hr/>		
12) Group 5: Toxic waste removal (non-mechanical systems)	32.05	20.10
<hr/>		
13) Group 6: Blasters	31.80	20.10
<hr/>		
Group 7: Asbestos/lead removal, non-mechanical systems (does not include leaded joint pipe)	31.05	20.10
<hr/>		
Group 8: Traffic control signalmen	16.00	20.10
<hr/>		

As of:

Monday, October 22, 2018

Project: 2018 Manhole Rehabilitation

Group 9: Hydraulic Drills	29.30	18.90
---------------------------	-------	-------

---LABORERS (TUNNEL CONSTRUCTION, FREE AIR). Shield Drive and
Liner Plate Tunnels in Free Air.---

13a) Miners, Motormen, Mucking Machine Operators, Nozzle Men, Grout Men, Shaft & Tunnel Steel & Rodmen, Shield & Erector, Arm Operator, Cable Tenders	32.22	20.10 + a
---	-------	-----------

13b) Brakemen, Trackmen	31.28	20.10 + a
-------------------------	-------	-----------

---CLEANING, CONCRETE AND CAULKING TUNNEL---

14) Concrete Workers, Form Movers, and Strippers	31.28	20.10 + a
--	-------	-----------

15) Form Erectors	31.60	20.10 + a
-------------------	-------	-----------

Project: 2018 Manhole Rehabilitation

---ROCK SHAFT LINING, CONCRETE, LINING OF SAME AND TUNNEL
IN FREE AIR:----

16) Brakemen, Trackmen, Tunnel Laborers, Shaft Laborers	31.28	20.10 + a
---	-------	-----------

17) Laborers Topside, Cage Tenders, Bellman	31.17	20.10 + a
---	-------	-----------

18) Miners	32.22	20.10 + a
------------	-------	-----------

---TUNNELS, CAISSON AND CYLINDER WORK IN COMPRESSED
AIR: ----

18a) Blaster	38.53	20.10 + a
--------------	-------	-----------

19) Brakemen, Trackmen, Groutman, Laborers, Outside Lock Tender, Gauge Tenders	38.34	20.10 + a
---	-------	-----------

As of:

Monday, October 22, 2018

Project: 2018 Manhole Rehabilitation

20) Change House Attendants, Powder Watchmen, Top on Iron Bolts	36.41	20.10 + a
---	-------	-----------

21) Mucking Machine Operator	39.11	20.10 + a
------------------------------	-------	-----------

---TRUCK DRIVERS---(*see note below)

Two axle trucks	29.13	23.33 + a
-----------------	-------	-----------

Three axle trucks; two axle ready mix	29.23	23.33 + a
---------------------------------------	-------	-----------

Three axle ready mix	29.28	23.33 + a
----------------------	-------	-----------

Four axle trucks, heavy duty trailer (up to 40 tons)	29.33	23.33 + a
--	-------	-----------

As of:

Monday, October 22, 2018

Project: 2018 Manhole Rehabilitation

Four axle ready-mix	29.38	23.33 + a
<hr/>		
Heavy duty trailer (40 tons and over)	29.58	23.33 + a
<hr/>		
Specialized earth moving equipment other than conventional type on-the road trucks and semi-trailer (including Euclids)	29.38	23.33 + a
<hr/>		
---POWER EQUIPMENT OPERATORS---		
<hr/>		
Group 1: Crane handling or erecting structural steel or stone, hoisting engineer (2 drums or over), front end loader (7 cubic yards or over), Work Boat 26 ft. & Over, Tunnel Boring Machines. (Trade License Required)	39.55	24.05 + a
<hr/>		
Group 2: Cranes (100 ton rate capacity and over); Excavator over 2 cubic yards; Piledriver (\$3.00 premium when operator controls hammer); Bauer Drill/Caisson. (Trade License Required)	39.23	24.05 + a
<hr/>		
Group 3: Excavator/Backhoe under 2 cubic yards; Cranes (under 100 ton rated capacity), Gradall; Master Mechanic; Hoisting Engineer (all types of equipment where a drum and cable are used to hoist or drag material regardless of motive power of operation), Rubber Tire Excavator (Drott-1085 or similar); Grader Operator; Bulldozer Fine Grade (slopes, shaping, laser or GPS, etc.). (Trade License Required)	38.49	24.05 + a
<hr/>		

As of:

Monday, October 22, 2018

Project: 2018 Manhole Rehabilitation

Group 4: Trenching Machines; Lighter Derrick; Concrete Finishing Machine; CMI Machine or Similar; Koehring Loader (Skooper)	38.10	24.05 + a
---	-------	-----------

Group 5: Specialty Railroad Equipment; Asphalt Paver; Asphalt Spreader; Asphalt Reclaiming Machine; Line Grinder; Concrete Pumps; Drills with Self Contained Power Units; Boring Machine; Post Hole Digger; Auger; Pounder; Well Digger; Milling Machine (over 24" Mandrell)	37.51	24.05 + a
--	-------	-----------

Group 5 continued: Side Boom; Combination Hoe and Loader; Directional Driller.	37.51	24.05 + a
--	-------	-----------

Group 6: Front End Loader (3 up to 7 cubic yards); Bulldozer (rough grade dozer).	37.20	24.05 + a
---	-------	-----------

Group 7: Asphalt Roller; Concrete Saws and Cutters (ride on types); Vermeer Concrete Cutter; Stump Grinder; Scraper; Snooper; Skidder; Milling Machine (24" and Under Mandrel).	36.86	24.05 + a
---	-------	-----------

Group 8: Mechanic, Grease Truck Operator, Hydroblaster, Barrier Mover, Power Stone Spreader; Welder; Work Boat under 26 ft.; Transfer Machine.	36.46	24.05 + a
--	-------	-----------

Group 9: Front End Loader (under 3 cubic yards), Skid Steer Loader regardless of attachments (Bobcat or Similar); Fork Lift, Power Chipper; Landscape Equipment (including hydroseeder).	36.03	24.05 + a
--	-------	-----------

Project: 2018 Manhole Rehabilitation

Group 10: Vibratory Hammer, Ice Machine, Diesel and Air Hammer, etc. 33.99 24.05 + a

Group 11: Conveyor, Earth Roller; Power Pavement Breaker (whiphammer), Robot Demolition Equipment. 33.99 24.05 + a

Group 12: Wellpoint Operator. 33.93 24.05 + a

Group 13: Compressor Battery Operator. 33.35 24.05 + a

Group 14: Elevator Operator; Tow Motor Operator (Solid Tire No Rough Terrain). 32.21 24.05 + a

Group 15: Generator Operator; Compressor Operator; Pump Operator; Welding Machine Operator; Heater Operator. 31.80 24.05 + a

Group 16: Maintenance Engineer/Oiler 31.15 24.05 + a

Project: 2018 Manhole Rehabilitation

Group 17: Portable asphalt plant operator; portable crusher plant operator; portable concrete plant operator.	35.46	24.05 + a
---	-------	-----------

Group 18: Power Safety Boat; Vacuum Truck; Zim Mixer; Sweeper; (minimum for any job requiring CDL license).	33.04	24.05 + a
---	-------	-----------

**NOTE: SEE BELOW

---LINE CONSTRUCTION---(Railroad Construction and Maintenance)---

20) Lineman, Cable Splicer, Technician	48.19	6.5% + 22.00
--	-------	--------------

21) Heavy Equipment Operator	42.26	6.5% + 19.88
------------------------------	-------	--------------

22) Equipment Operator, Tractor Trailer Driver, Material Men	40.96	6.5% + 19.21
--	-------	--------------

Project: 2018 Manhole Rehabilitation

23) Driver Groundmen	26.50	6.5% + 9.00
----------------------	-------	-------------

23a) Truck Driver	40.96	6.5% + 17.76
-------------------	-------	--------------

---LINE CONSTRUCTION---

24) Driver Groundmen	30.92	6.5% + 9.70
----------------------	-------	-------------

25) Groundmen	22.67	6.5% + 6.20
---------------	-------	-------------

26) Heavy Equipment Operators	37.10	6.5% + 10.70
-------------------------------	-------	--------------

27) Linemen, Cable Splicers, Dynamite Men	41.22	6.5% + 12.20
---	-------	--------------

Project: 2018 Manhole Rehabilitation

28) Material Men, Tractor Trailer Drivers, Equipment Operators

35.04

6.5% + 10.45

As of:

Monday, October 22, 2018

Project: 2018 Manhole Rehabilitation

Welders: Rate for craft to which welding is incidental.

**Note: Hazardous waste removal work receives additional \$1.25 per hour for truck drivers.*

***Note: Hazardous waste premium \$3.00 per hour over classified rate*

ALL Cranes: When crane operator is operating equipment that requires a fully licensed crane operator to operate he receives an extra \$4.00 premium in addition to the hourly wage rate and benefit contributions:

1) Crane handling or erecting structural steel or stone; hoisting engineer (2 drums or over)

2) Cranes (100 ton rate capacity and over) Bauer Drill/Caisson

3) Cranes (under 100 ton rated capacity)

Crane with 150 ft. boom (including jib) - \$1.50 extra

Crane with 200 ft. boom (including jib) - \$2.50 extra

Crane with 250 ft. boom (including jib) - \$5.00 extra

Crane with 300 ft. boom (including jib) - \$7.00 extra

Crane with 400 ft. boom (including jib) - \$10.00 extra

All classifications that indicate a percentage of the fringe benefits must be calculated at the percentage rate times the "base hourly rate".

Apprentices duly registered under the Commissioner of Labor's regulations on "Work Training Standards for Apprenticeship and Training Programs" Section 31-51-d-1 to 12, are allowed to be paid the appropriate percentage of the prevailing journeymen hourly base and the full fringe benefit rate, providing the work site ratio shall not be less than one full-time journeyman instructing and supervising the work of each apprentice in a specific trade.

~~Connecticut General Statute Section 31-55a: Annual Adjustments to wage rates by contractors doing state work ~~

The Prevailing wage rates applicable to this project are subject to annual adjustments each July 1st for the duration of the project.

Each contractor shall pay the annual adjusted prevailing wage rate that is in effect each July 1st, as posted by the Department of Labor.

It is the contractor's responsibility to obtain the annual adjusted prevailing wage rate increases directly from the Department of Labor's website.

The annual adjustments will be posted on the Department of Labor's Web page: www.ct.gov/dol.

The Department of Labor will continue to issue the initial prevailing wage rate schedule to the Contracting Agency for the project.

All subsequent annual adjustments will be posted on our Web Site for contractor access.

Contracting Agencies are under no obligation pursuant to State labor law to pay any increase due to the annual adjustment provision.

As of: Monday, October 22, 2018

Project: 2018 Manhole Rehabilitation

Effective October 1, 2005 - Public Act 05-50: any person performing the work of any mechanic, laborer, or worker shall be paid prevailing wage

All Person who perform work ON SITE must be paid prevailing wage for the appropriate mechanic, laborer, or worker classification.

All certified payrolls must list the hours worked and wages paid to All Persons who perform work ON SITE regardless of their ownership i.e.: (Owners, Corporate Officers, LLC Members, Independent Contractors, et. al)

Reporting and payment of wages is required regardless of any contractual relationship alleged to exist between the contractor and such person.

~~Unlisted classifications needed for work not included within the scope of the classifications listed may be added after award only as provided in the labor standards contract clause (29 CFR 5.5 (a) (1) (ii)).

Please direct any questions which you may have pertaining to classification of work and payment of prevailing wages to the Wage and Workplace Standards Division, telephone (860)263-6790.

As of:

Monday, October 22, 2018

Project: 2018 Manhole Rehabilitation

**Minimum Rates and Classifications
for Heavy/Highway Construction**

ID#: H 25365

**Connecticut Department of Labor
Wage and Workplace Standards Division**

By virtue of the authority vested in the Labor Commissioner under provisions of Section 31-53 of the General Statutes of Connecticut, as amended, the following are declared to be the prevailing rates and welfare payments and will apply only where the contract is advertised for bid within 20 days of the date on which the rates are established. Any contractor or subcontractor not obligated by agreement to pay to the welfare and pension fund shall pay this amount to each employee as part of his/her hourly wages.

Project Number: SSR 2018-08

Project Town: East Haven

FAP Number:

State Number:

Project: 2018 Manhole Rehabilitation

CLASSIFICATION	Hourly Rate	Benefits
01) Asbestos/Toxic Waste Removal Laborers: Asbestos removal and encapsulation (except its removal from mechanical systems which are not to be scrapped), toxic waste removers, blasters. **See Laborers Group 5 and 7**		
1) Boilermaker	33.79	34% + 8.96
1a) Bricklayer, Cement Masons, Cement Finishers, Plasterers, Stone Masons	33.48	31.66
2) Carpenters, Piledrivermen	32.60	25.34

As of:

Monday, October 22, 2018

Project: 2018 Manhole Rehabilitation

2a) Diver Tenders	32.60	25.34
-------------------	-------	-------

3) Divers	41.06	25.34
-----------	-------	-------

03a) Millwrights	33.14	25.74
------------------	-------	-------

4) Painters: (Bridge Construction) Brush, Roller, Blasting (Sand, Water, etc.), Spray	49.75	21.05
--	-------	-------

4a) Painters: Brush and Roller	33.62	21.05
--------------------------------	-------	-------

4b) Painters: Spray Only	36.62	21.05
--------------------------	-------	-------

4c) Painters: Steel Only	35.62	21.05
--------------------------	-------	-------

As of:

Monday, October 22, 2018

Project: 2018 Manhole Rehabilitation

4d) Painters: Blast and Spray 36.62 21.05

4e) Painters: Tanks, Tower and Swing 35.62 21.05

5) Electrician (Trade License required: E-1,2 L-5,6 C-5,6 T-1,2 L-1,2 V-1,2,7,8,9) 37.50 27.91+3% of gross wage

6) Ironworkers: Ornamental, Reinforcing, Structural, and Precast Concrete Erection 35.47 35.14 + a

7) Plumbers (Trade License required: (P-1,2,6,7,8,9 J-1,2,3,4 SP-1,2) and Pipefitters (Including HVAC Work) (Trade License required: S-1,2,3,4,5,6,7,8 B-1,2,3,4 D-1,2,3,4 G-1, G-2, G-8, G-9) 42.62 31.21

---LABORERS----

8) Group 1: Laborer (Unskilled), Common or General, acetylene burner, concrete specialist 30.05 20.10

Project: 2018 Manhole Rehabilitation

9) Group 2: Chain saw operators, fence and guard rail erectors, pneumatic tool operators, powdermen	30.30	20.10
<hr/>		
10) Group 3: Pipelayers	30.55	20.10
<hr/>		
11) Group 4: Jackhammer/Pavement breaker (handheld); mason tenders (cement/concrete), catch basin builders, asphalt rakers, air track operators, block paver, curb setter and forklift operators	30.55	20.10
<hr/>		
12) Group 5: Toxic waste removal (non-mechanical systems)	32.05	20.10
<hr/>		
13) Group 6: Blasters	31.80	20.10
<hr/>		
Group 7: Asbestos/lead removal, non-mechanical systems (does not include leaded joint pipe)	31.05	20.10
<hr/>		
Group 8: Traffic control signalmen	16.00	20.10
<hr/>		

As of:

Monday, October 22, 2018

Project: 2018 Manhole Rehabilitation

Group 9: Hydraulic Drills	29.30	18.90
---------------------------	-------	-------

---LABORERS (TUNNEL CONSTRUCTION, FREE AIR). Shield Drive and
Liner Plate Tunnels in Free Air.---

13a) Miners, Motormen, Mucking Machine Operators, Nozzle Men, Grout Men, Shaft & Tunnel Steel & Rodmen, Shield & Erector, Arm Operator, Cable Tenders	32.22	20.10 + a
---	-------	-----------

13b) Brakemen, Trackmen	31.28	20.10 + a
-------------------------	-------	-----------

---CLEANING, CONCRETE AND CAULKING TUNNEL---

14) Concrete Workers, Form Movers, and Strippers	31.28	20.10 + a
--	-------	-----------

15) Form Erectors	31.60	20.10 + a
-------------------	-------	-----------

Project: 2018 Manhole Rehabilitation

---ROCK SHAFT LINING, CONCRETE, LINING OF SAME AND TUNNEL
IN FREE AIR:----

16) Brakemen, Trackmen, Tunnel Laborers, Shaft Laborers	31.28	20.10 + a
---	-------	-----------

17) Laborers Topside, Cage Tenders, Bellman	31.17	20.10 + a
---	-------	-----------

18) Miners	32.22	20.10 + a
------------	-------	-----------

---TUNNELS, CAISSON AND CYLINDER WORK IN COMPRESSED
AIR: ----

18a) Blaster	38.53	20.10 + a
--------------	-------	-----------

19) Brakemen, Trackmen, Groutman, Laborers, Outside Lock Tender, Gauge Tenders	38.34	20.10 + a
---	-------	-----------

As of: Monday, October 22, 2018

Project: 2018 Manhole Rehabilitation

20) Change House Attendants, Powder Watchmen, Top on Iron Bolts	36.41	20.10 + a
---	-------	-----------

21) Mucking Machine Operator	39.11	20.10 + a
------------------------------	-------	-----------

---TRUCK DRIVERS---(*see note below)

Two axle trucks	29.13	23.33 + a
-----------------	-------	-----------

Three axle trucks; two axle ready mix	29.23	23.33 + a
---------------------------------------	-------	-----------

Three axle ready mix	29.28	23.33 + a
----------------------	-------	-----------

Four axle trucks, heavy duty trailer (up to 40 tons)	29.33	23.33 + a
--	-------	-----------

Project: 2018 Manhole Rehabilitation

Four axle ready-mix	29.38	23.33 + a
<hr/>		
Heavy duty trailer (40 tons and over)	29.58	23.33 + a
<hr/>		
Specialized earth moving equipment other than conventional type on-the road trucks and semi-trailer (including Euclids)	29.38	23.33 + a
<hr/>		
---POWER EQUIPMENT OPERATORS---		
<hr/>		
Group 1: Crane handling or erecting structural steel or stone, hoisting engineer (2 drums or over), front end loader (7 cubic yards or over), Work Boat 26 ft. & Over, Tunnel Boring Machines. (Trade License Required)	39.55	24.05 + a
<hr/>		
Group 2: Cranes (100 ton rate capacity and over); Excavator over 2 cubic yards; Piledriver (\$3.00 premium when operator controls hammer); Bauer Drill/Caisson. (Trade License Required)	39.23	24.05 + a
<hr/>		
Group 3: Excavator/Backhoe under 2 cubic yards; Cranes (under 100 ton rated capacity), Gradall; Master Mechanic; Hoisting Engineer (all types of equipment where a drum and cable are used to hoist or drag material regardless of motive power of operation), Rubber Tire Excavator (Drott-1085 or similar); Grader Operator; Bulldozer Fine Grade (slopes, shaping, laser or GPS, etc.). (Trade License Required)	38.49	24.05 + a
<hr/>		

As of:

Monday, October 22, 2018

Project: 2018 Manhole Rehabilitation

Group 4: Trenching Machines; Lighter Derrick; Concrete Finishing Machine; CMI Machine or Similar; Koehring Loader (Skooper)	38.10	24.05 + a
---	-------	-----------

Group 5: Specialty Railroad Equipment; Asphalt Paver; Asphalt Spreader; Asphalt Reclaiming Machine; Line Grinder; Concrete Pumps; Drills with Self Contained Power Units; Boring Machine; Post Hole Digger; Auger; Pounder; Well Digger; Milling Machine (over 24" Mandrell)	37.51	24.05 + a
--	-------	-----------

Group 5 continued: Side Boom; Combination Hoe and Loader; Directional Driller.	37.51	24.05 + a
--	-------	-----------

Group 6: Front End Loader (3 up to 7 cubic yards); Bulldozer (rough grade dozer).	37.20	24.05 + a
---	-------	-----------

Group 7: Asphalt Roller; Concrete Saws and Cutters (ride on types); Vermeer Concrete Cutter; Stump Grinder; Scraper; Snooper; Skidder; Milling Machine (24" and Under Mandrel).	36.86	24.05 + a
---	-------	-----------

Group 8: Mechanic, Grease Truck Operator, Hydroblaster, Barrier Mover, Power Stone Spreader; Welder; Work Boat under 26 ft.; Transfer Machine.	36.46	24.05 + a
--	-------	-----------

Group 9: Front End Loader (under 3 cubic yards), Skid Steer Loader regardless of attachments (Bobcat or Similar); Fork Lift, Power Chipper; Landscape Equipment (including hydroseeder).	36.03	24.05 + a
--	-------	-----------

Project: 2018 Manhole Rehabilitation

Group 10: Vibratory Hammer, Ice Machine, Diesel and Air Hammer, etc. 33.99 24.05 + a

Group 11: Conveyor, Earth Roller; Power Pavement Breaker (whiphammer),
Robot Demolition Equipment. 33.99 24.05 + a

Group 12: Wellpoint Operator. 33.93 24.05 + a

Group 13: Compressor Battery Operator. 33.35 24.05 + a

Group 14: Elevator Operator; Tow Motor Operator (Solid Tire No Rough
Terrain). 32.21 24.05 + a

Group 15: Generator Operator; Compressor Operator; Pump Operator; Welding
Machine Operator; Heater Operator. 31.80 24.05 + a

Group 16: Maintenance Engineer/Oiler 31.15 24.05 + a

Project: 2018 Manhole Rehabilitation

Group 17: Portable asphalt plant operator; portable crusher plant operator; portable concrete plant operator.	35.46	24.05 + a
---	-------	-----------

Group 18: Power Safety Boat; Vacuum Truck; Zim Mixer; Sweeper; (minimum for any job requiring CDL license).	33.04	24.05 + a
---	-------	-----------

**NOTE: SEE BELOW

---LINE CONSTRUCTION---(Railroad Construction and Maintenance)---

20) Lineman, Cable Splicer, Technician	48.19	6.5% + 22.00
--	-------	--------------

21) Heavy Equipment Operator	42.26	6.5% + 19.88
------------------------------	-------	--------------

22) Equipment Operator, Tractor Trailer Driver, Material Men	40.96	6.5% + 19.21
--	-------	--------------

Project: 2018 Manhole Rehabilitation

23) Driver Groundmen	26.50	6.5% + 9.00
----------------------	-------	-------------

23a) Truck Driver	40.96	6.5% + 17.76
-------------------	-------	--------------

---LINE CONSTRUCTION---

24) Driver Groundmen	30.92	6.5% + 9.70
----------------------	-------	-------------

25) Groundmen	22.67	6.5% + 6.20
---------------	-------	-------------

26) Heavy Equipment Operators	37.10	6.5% + 10.70
-------------------------------	-------	--------------

27) Linemen, Cable Splicers, Dynamite Men	41.22	6.5% + 12.20
---	-------	--------------

Project: 2018 Manhole Rehabilitation

28) Material Men, Tractor Trailer Drivers, Equipment Operators

35.04

6.5% + 10.45

As of:

Monday, October 22, 2018

Project: 2018 Manhole Rehabilitation

Welders: Rate for craft to which welding is incidental.

**Note: Hazardous waste removal work receives additional \$1.25 per hour for truck drivers.*

***Note: Hazardous waste premium \$3.00 per hour over classified rate*

ALL Cranes: When crane operator is operating equipment that requires a fully licensed crane operator to operate he receives an extra \$4.00 premium in addition to the hourly wage rate and benefit contributions:

1) Crane handling or erecting structural steel or stone; hoisting engineer (2 drums or over)

2) Cranes (100 ton rate capacity and over) Bauer Drill/Caisson

3) Cranes (under 100 ton rated capacity)

Crane with 150 ft. boom (including jib) - \$1.50 extra

Crane with 200 ft. boom (including jib) - \$2.50 extra

Crane with 250 ft. boom (including jib) - \$5.00 extra

Crane with 300 ft. boom (including jib) - \$7.00 extra

Crane with 400 ft. boom (including jib) - \$10.00 extra

All classifications that indicate a percentage of the fringe benefits must be calculated at the percentage rate times the "base hourly rate".

Apprentices duly registered under the Commissioner of Labor's regulations on "Work Training Standards for Apprenticeship and Training Programs" Section 31-51-d-1 to 12, are allowed to be paid the appropriate percentage of the prevailing journeymen hourly base and the full fringe benefit rate, providing the work site ratio shall not be less than one full-time journeyman instructing and supervising the work of each apprentice in a specific trade.

~~Connecticut General Statute Section 31-55a: Annual Adjustments to wage rates by contractors doing state work ~~

The Prevailing wage rates applicable to this project are subject to annual adjustments each July 1st for the duration of the project.

Each contractor shall pay the annual adjusted prevailing wage rate that is in effect each July 1st, as posted by the Department of Labor.

It is the contractor's responsibility to obtain the annual adjusted prevailing wage rate increases directly from the Department of Labor's website.

The annual adjustments will be posted on the Department of Labor's Web page: www.ct.gov/dol.

The Department of Labor will continue to issue the initial prevailing wage rate schedule to the Contracting Agency for the project.

All subsequent annual adjustments will be posted on our Web Site for contractor access.

Contracting Agencies are under no obligation pursuant to State labor law to pay any increase due to the annual adjustment provision.

As of: Monday, October 22, 2018

Project: 2018 Manhole Rehabilitation

Effective October 1, 2005 - Public Act 05-50: any person performing the work of any mechanic, laborer, or worker shall be paid prevailing wage

All Person who perform work ON SITE must be paid prevailing wage for the appropriate mechanic, laborer, or worker classification.

All certified payrolls must list the hours worked and wages paid to All Persons who perform work ON SITE regardless of their ownership i.e.: (Owners, Corporate Officers, LLC Members, Independent Contractors, et. al)

Reporting and payment of wages is required regardless of any contractual relationship alleged to exist between the contractor and such person.

~~Unlisted classifications needed for work not included within the scope of the classifications listed may be added after award only as provided in the labor standards contract clause (29 CFR 5.5 (a) (1) (ii)).

Please direct any questions which you may have pertaining to classification of work and payment of prevailing wages to the Wage and Workplace Standards Division, telephone (860)263-6790.

As of:

Monday, October 22, 2018

Sec. 31-53b. Construction safety and health course. New miner training program. Proof of completion required for mechanics, laborers and workers on public works projects. Enforcement. Regulations. Exceptions. (a) Each contract for a public works project entered into on or after July 1, 2009, by the state or any of its agents, or by any political subdivision of the state or any of its agents, described in subsection (g) of section 31-53, shall contain a provision requiring that each contractor furnish proof with the weekly certified payroll form for the first week each employee begins work on such project that any person performing the work of a mechanic, laborer or worker pursuant to the classifications of labor under section 31-53 on such public works project, pursuant to such contract, has completed a course of at least ten hours in duration in construction safety and health approved by the federal Occupational Safety and Health Administration or, has completed a new miner training program approved by the Federal Mine Safety and Health Administration in accordance with 30 CFR 48 or, in the case of telecommunications employees, has completed at least ten hours of training in accordance with 29 CFR 1910.268.

(b) Any person required to complete a course or program under subsection (a) of this section who has not completed the course or program shall be subject to removal from the worksite if the person does not provide documentation of having completed such course or program by the fifteenth day after the date the person is found to be in noncompliance. The Labor Commissioner or said commissioner's designee shall enforce this section.

(c) Not later than January 1, 2009, the Labor Commissioner shall adopt regulations, in accordance with the provisions of chapter 54, to implement the provisions of subsections (a) and (b) of this section. Such regulations shall require that the ten-hour construction safety and health courses required under subsection (a) of this section be conducted in accordance with federal Occupational Safety and Health Administration Training Institute standards, or in accordance with Federal Mine Safety and Health Administration Standards or in accordance with 29 CFR 1910.268, as appropriate. The Labor Commissioner shall accept as sufficient proof of compliance with the provisions of subsection (a) or (b) of this section a student course completion card issued by the federal Occupational Safety and Health Administration Training Institute, or such other proof of compliance said commissioner deems appropriate, dated no earlier than five years before the commencement date of such public works project.

(d) This section shall not apply to employees of public service companies, as defined in section 16-1, or drivers of commercial motor vehicles driving the vehicle on the public works project and delivering or picking up cargo from public works projects provided they perform no labor relating to the project other than the loading and unloading of their cargo.

(P.A. 06-175, S. 1; P.A. 08-83, S. 1.)

History: P.A. 08-83 amended Subsec. (a) by making provisions applicable to public works project contracts entered into on or after July 1, 2009, replacing provision re total cost of work with reference to Sec. 31-53(g), requiring proof in certified payroll form that new mechanic, laborer or worker has completed a 10-hour or more construction safety course and adding provision re new miner training program, amended Subsec. (b) by substituting "person" for "employee" and adding "or program", amended Subsec. (c) by adding "or in accordance with Federal Mine Safety and Health Administration Standards" and setting new deadline of January 1, 2009, deleted former Subsec. (d) re "public building", added new Subsec. (d) re exemptions for public service company employees and delivery drivers who perform no labor other than delivery and made conforming and technical changes, effective January 1, 2009.

Informational Bulletin

THE 10-HOUR OSHA CONSTRUCTION SAFETY AND HEALTH COURSE

(applicable to public building contracts entered into *on or after July 1, 2007*, where the total cost of all work to be performed is at least \$100,000)

- (1) This requirement was created by Public Act No. 06-175, which is codified in Section 31-53b of the Connecticut General Statutes (pertaining to the prevailing wage statutes);
- (2) The course is required for public building construction contracts (projects funded in whole or in part by the state or any political subdivision of the state) entered into on or after July 1, 2007;
- (3) It is required of private employees (not state or municipal employees) and apprentices who perform manual labor for a general contractor or subcontractor on a public building project where the total cost of all work to be performed is at least \$100,000;
- (4) The ten-hour construction course pertains to the ten-hour Outreach Course conducted in accordance with federal OSHA Training Institute standards, and, for telecommunications workers, a ten-hour training course conducted in accordance with federal OSHA standard, 29 CFR 1910.268;
- (5) The internet website for the federal OSHA Training Institute is http://www.osha.gov/fso/ote/training/edcenters/fact_sheet.html;
- (6) The statutory language leaves it to the contractor and its employees to determine who pays for the cost of the ten-hour Outreach Course;
- (7) Within 30 days of receiving a contract award, a general contractor must furnish proof to the Labor Commissioner that all employees and apprentices performing manual labor on the project will have completed such a course;
- (8) Proof of completion may be demonstrated through either: (a) the presentation of a *bona fide* student course completion card issued by the federal OSHA Training Institute; *or* (2) the presentation of documentation provided to an employee by a trainer certified by the Institute pending the actual issuance of the completion card;
- (9) Any card with an issuance date more than 5 years prior to the commencement date of the construction project shall not constitute proof of compliance;

- (10) Each employer shall affix a copy of the construction safety course completion card to the certified payroll submitted to the contracting agency in accordance with Conn. Gen. Stat. § 31-53(f) on which such employee's name first appears;
- (11) Any employee found to be in non-compliance shall be subject to removal from the worksite if such employee does not provide satisfactory proof of course completion to the Labor Commissioner by the fifteenth day after the date the employee is determined to be in noncompliance;
- (12) Any such employee who is determined to be in noncompliance may continue to work on a public building construction project for a maximum of fourteen consecutive calendar days while bringing his or her status into compliance;
- (13) The Labor Commissioner may make complaint to the prosecuting authorities regarding any employer or agent of the employer, or officer or agent of the corporation who files a false certified payroll with respect to the status of an employee who is performing manual labor on a public building construction project;
- (14) The statute provides the minimum standards required for the completion of a safety course by manual laborers on public construction contracts; any contractor can exceed these minimum requirements; and
- (15) Regulations clarifying the statute are currently in the regulatory process, and shall be posted on the CTDOL website as soon as they are adopted in final form.
- (16) Any questions regarding this statute may be directed to the Wage and Workplace Standards Division of the Connecticut Labor Department via the internet website of <http://www.ctdol.state.ct.us/wgwkstnd/wgemenu.htm>; or by telephone at (860)263-6790.

THE ABOVE INFORMATION IS PROVIDED EXCLUSIVELY AS AN EDUCATIONAL RESOURCE, AND IS NOT INTENDED AS A SUBSTITUTE FOR LEGAL INTERPRETATIONS WHICH MAY ULTIMATELY ARISE CONCERNING THE CONSTRUCTION OF THE STATUTE OR THE REGULATIONS.

November 29, 2006

Notice
To All Mason Contractors and Interested Parties
Regarding Construction Pursuant to Section 31-53 of the
Connecticut General Statutes (Prevailing Wage)

The Connecticut Labor Department Wage and Workplace Standards Division is empowered to enforce the prevailing wage rates on projects covered by the above referenced statute.

Over the past few years the Division has withheld enforcement of the rate in effect for workers who operate a forklift on a prevailing wage rate project due to a potential jurisdictional dispute.

The rate listed in the schedules and in our Occupational Bulletin (see enclosed) has been as follows:

Forklift Operator:

- **Laborers (Group 4) Mason Tenders** - operates forklift solely to assist a mason to a maximum height of nine feet only.

- **Power Equipment Operator (Group 9)** - operates forklift to assist any trade and to assist a mason to a height over nine feet.

The U.S. Labor Department conducted a survey of rates in Connecticut but it has not been published and the rate in effect remains as outlined in the above Occupational Bulletin.

Since this is a classification matter and not one of jurisdiction, effective January 1, 2007 the Connecticut Labor Department will enforce the rate on each schedule in accordance with our statutory authority.

Your cooperation in filing appropriate and accurate certified payrolls is appreciated.

STATUTE 31-55a

- SPECIAL NOTICE -

To: All State and Political Subdivisions, Their Agents, and Contractors

Connecticut General Statute 31-55a - Annual adjustments to wage rates by contractors doing state work.

Each contractor that is awarded a contract on or after October 1, 2002, for (1) the construction of a state highway or bridge that falls under the provisions of section 31-54 of the general statutes, or (2) the construction, remodeling, refinishing, refurbishing, rehabilitation, alteration or repair of any public works project that falls under the provisions of section 31-53 of the general statutes shall contact the Labor Commissioner on or before July first of each year, for the duration of such contract, to ascertain the prevailing rate of wages on an hourly basis and the amount of payment or contributions paid or payable on behalf of each mechanic, laborer or worker employed upon the work contracted to be done, and shall make any necessary adjustments to such prevailing rate of wages and such payment or contributions paid or payable on behalf of each such employee, effective each July first.

- The prevailing wage rates applicable to any contract or subcontract awarded on or after October 1, 2002 are subject to annual adjustments each July 1st for the duration of any project which was originally advertised for bids on or after October 1, 2002.
- Each contractor affected by the above requirement shall pay the annual adjusted prevailing wage rate that is in effect each July 1st, as posted by the Department of Labor.
- It is the **contractor's** responsibility to obtain the annual adjusted prevailing wage rate increases directly from the Department of Labor's Web Site. The annual adjustments will be posted on the Department of Labor Web page: www.ctdol.state.ct.us. For those without internet access, please contact the division listed below.
- The Department of Labor will continue to issue the initial prevailing wage rate schedule to the Contracting Agency for the project. All subsequent annual adjustments will be posted on our Web Site for contractor access.

Any questions should be directed to the Contract Compliance Unit, Wage and Workplace Standards Division, Connecticut Department of Labor, 200 Folly Brook Blvd., Wethersfield, CT 06109 at (860)263-6790.

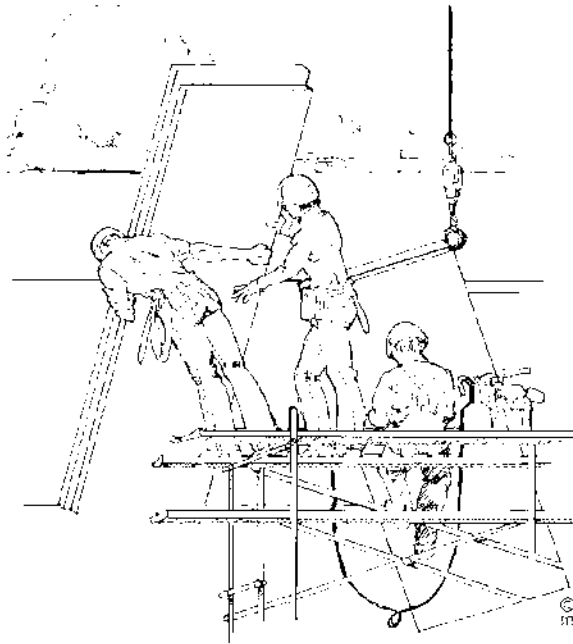
~NOTICE~

TO ALL CONTRACTING AGENCIES

Please be advised that Connecticut General Statutes Section 31-53, requires the contracting agency to certify to the Department of Labor, the total dollar amount of work to be done in connection with such public works project, regardless of whether such project consists of one or more contracts.

Please find the attached “Contracting Agency Certification Form” to be completed and returned to the Department of Labor, Wage and Workplace Standards Division, Public Contract Compliance Unit.

 Inquiries can be directed to (860)263-6543.



CONNECTICUT DEPARTMENT OF LABOR
WAGE AND WORKPLACE STANDARDS DIVISION
CONTRACT COMPLIANCE UNIT

CONTRACTING AGENCY CERTIFICATION FORM

I, _____, acting in my official capacity as _____,
authorized representative title

for _____, located at _____,
contracting agency address

do hereby certify that the total dollar amount of work to be done in connection with
_____, located at _____,
project name and number address

shall be \$_____, which includes all work, regardless of whether such project
consists of one or more contracts.

CONTRACTOR INFORMATION

Name: _____

Address: _____

Authorized Representative: _____

Approximate Starting Date: _____

Approximate Completion Date: _____

Signature

Date

Return To: Connecticut Department of Labor
Wage & Workplace Standards Division
Contract Compliance Unit
200 Folly Brook Blvd.
Wethersfield, CT 06109

Date Issued: _____

CONNECTICUT DEPARTMENT OF LABOR
WAGE AND WORKPLACE STANDARDS DIVISION

CONTRACTORS WAGE CERTIFICATION FORM
Construction Manager at Risk/General Contractor/Prime Contractor

I, _____ of _____
Officer, Owner, Authorized Rep. Company Name

do hereby certify that the _____
Company Name

Street

City

and all of its subcontractors will pay all workers on the

Project Name and Number

Street and City

the wages as listed in the schedule of prevailing rates required for such project (a copy of which is attached hereto).

Signed

Subscribed and sworn to before me this _____ day of _____, _____.

Notary Public

Return to:
Connecticut Department of Labor
Wage & Workplace Standards Division
200 Folly Brook Blvd.
Wethersfield, CT 06109

Rate Schedule Issued (Date): _____

[New] In accordance with Section 31-53b(a) of the C.G.S. each contractor shall provide a copy of the OSHA 10 Hour Construction Safety and Health Card for each employee, to be attached to the first certified payroll on the project.

In accordance with Connecticut General Statutes, 31-53 Certified Payrolls with a statement of compliance shall be submitted monthly to the contracting agency.

PAYROLL CERTIFICATION FOR PUBLIC WORKS PROJECTS

Connecticut Department of Labor
Wage and Workplace Standards Division
200 Folly Brook Blvd.
Wethersfield, CT 06109

WEEKLY PAYROLL

CONTRACTOR NAME AND ADDRESS:											SUBCONTRACTOR NAME & ADDRESS					WORKER'S COMPENSATION INSURANCE CARRIER							
PAYROLL NUMBER		Week-Ending Date	PROJECT NAME & ADDRESS											POLICY #					EFFECTIVE DATE: EXPIRATION DATE:				
PERSON/WORKER, ADDRESS and SECTION	APPR RATE %	MALE/FEMALE AND RACE*	WORK CLASSIFICATION	DAY AND DATE							Total ST Hours	BASE HOURLY RATE	TYPE OF FRINGE BENEFITS Per Hour 1 through 6 (see back)	GROSS PAY FOR ALL WORK PERFORMED THIS WEEK	TOTAL DEDUCTIONS				GROSS PAY FOR THIS PREVAILING RATE JOB	CHECK # AND NET PAY			
				S	M	T	W	TH	F	S					FICA	FEDERAL WITH-HOLDING	STATE WITH-HOLDING	LIST OTHER					
			Trade License Type & Number - OSHA 10 Certification Number	HOURS WORKED EACH DAY							Total O/T Hours	TOTAL FRINGE BENEFIT PLAN CASH											
												\$	1. \$										
												Base Rate	2. \$										
													3. \$										
													4. \$										
												\$	5. \$										
												Cash Fringe	6. \$										
												\$	1. \$										
												Base Rate	2. \$										
													3. \$										
													4. \$										
												\$	5. \$										
												Cash Fringe	6. \$										

12/9/2013 *IF REQUIRED
WWS-CPI

*SEE REVERSE SIDE

PAGE NUMBER ____ OF

***FRINGE BENEFITS EXPLANATION (P):**

Bona fide benefits paid to approved plans, funds or programs, except those required by Federal or State Law (unemployment tax, worker’s compensation, income taxes, etc.).

Please specify the type of benefits provided:

- 1) Medical or hospital care _____ 4) Disability _____
- 2) Pension or retirement _____ 5) Vacation, holiday _____
- 3) Life Insurance _____ 6) Other (please specify) _____

CERTIFIED STATEMENT OF COMPLIANCE

For the week ending date of _____,

I, _____ of _____, (hereafter known as Employer) in my capacity as _____ (title) do hereby certify and state:

Section A:

1. All persons employed on said project have been paid the full weekly wages earned by them during the week in accordance with Connecticut General Statutes, section 31-53, as amended. Further, I hereby certify and state the following:

- a) The records submitted are true and accurate;
- b) The rate of wages paid to each mechanic, laborer or workman and the amount of payment or contributions paid or payable on behalf of each such person to any employee welfare fund, as defined in Connecticut General Statutes, section 31-53 (h), are not less than the prevailing rate of wages and the amount of payment or contributions paid or payable on behalf of each such person to any employee welfare fund, as determined by the Labor Commissioner pursuant to subsection Connecticut General Statutes, section 31-53 (d), and said wages and benefits are not less than those which may also be required by contract;
- c) The Employer has complied with all of the provisions in Connecticut General Statutes, section 31-53 (and Section 31-54 if applicable for state highway construction);
- d) Each such person is covered by a worker’s compensation insurance policy for the duration of his employment which proof of coverage has been provided to the contracting agency;
- e) The Employer does not receive kickbacks, which means any money, fee, commission, credit, gift, gratuity, thing of value, or compensation of any kind which is provided directly or indirectly, to any prime contractor, prime contractor employee, subcontractor, or subcontractor employee for the purpose of improperly obtaining or rewarding favorable treatment in connection with a prime contract or in connection with a prime contractor in connection with a subcontractor relating to a prime contractor; and
- f) The Employer is aware that filing a certified payroll which he knows to be false is a class D felony for which the employer may be fined up to five thousand dollars, imprisoned for up to five years or both.

2. OSHA~The employer shall affix a copy of the construction safety course, program or training completion document to the certified payroll required to be submitted to the contracting agency for this project on which such persons name first appears.

_____ Submitted on (Date)

(Signature) (Title)

Weekly Payroll Certification For
Public Works Projects (Continued)

PAYROLL CERTIFICATION FOR PUBLIC WORKS PROJECTS

Week-Ending Date: _____
Contractor or Subcontractor Business Name: _____

WEEKLY PAYROLL

PERSON/WORKER, ADDRESS and SECTION	APPR RATE %	MALE/ FEMALE AND RACE*	WORK CLASSIFICATION Trade License Type & Number - OSHA 10 Certification Number	DAY AND DATE							Total ST Hours	BASE HOURLY RATE	TYPE OF FRINGE BENEFITS Per Hour 1 through 6 (see back)	GROSS PAY FOR ALL WORK PERFORMED THIS WEEK	TOTAL DEDUCTIONS				GROSS PAY FOR THIS PREVAILING RATE JOB	CHECK # AND NET PAY								
				S	M	T	W	TH	F	S					FICA	FEDERAL WITH- HOLDING	STATE WITH- HOLDING	OTHER										
				HOURS WORKED EACH DAY											Total O/T Hours	TOTAL FRINGE BENEFIT PLAN CASH	1. \$	2. \$			3. \$	4. \$	5. \$	6. \$				
												\$	Base Rate	1. \$	2. \$	3. \$	4. \$	5. \$	6. \$									
												\$	Cash Fringe	1. \$	2. \$	3. \$	4. \$	5. \$	6. \$									
												\$	Base Rate	1. \$	2. \$	3. \$	4. \$	5. \$	6. \$									
												\$	Cash Fringe	1. \$	2. \$	3. \$	4. \$	5. \$	6. \$									
												\$	Base Rate	1. \$	2. \$	3. \$	4. \$	5. \$	6. \$									
												\$	Cash Fringe	1. \$	2. \$	3. \$	4. \$	5. \$	6. \$									
												\$	Base Rate	1. \$	2. \$	3. \$	4. \$	5. \$	6. \$									
												\$	Cash Fringe	1. \$	2. \$	3. \$	4. \$	5. \$	6. \$									

*IF REQUIRED

[New] In accordance with Section 31-53b(a) of the C.G.S. each contractor shall provide a copy of the OSHA 10 Hour Construction Safety and Health Card for each employee, to be attached to the first certified payroll on the project.

PAYROLL CERTIFICATION FOR PUBLIC WORKS PROJECTS										Connecticut Department of Labor Wage and Workplace Standards Division 200 Folly Brook Blvd. Wethersfield, CT 06109										
In accordance with Connecticut General Statutes, 31-53 Certified Payrolls with a statement of compliance shall be submitted monthly to the contracting agency.										WEEKLY PAYROLL										
CONTRACTOR NAME AND ADDRESS: Landon Corporation, 15 Connecticut Avenue, Northford, CT 06472										SUBCONTRACTOR NAME & ADDRESS XYZ Corporation 2 Main Street Yantic, CT 06389				WORKER'S COMPENSATION INSURANCE CARRIER Travelers Insurance Company POLICY # #BAC8888928 EFFECTIVE DATE: 1/1/09 EXPIRATION DATE: 12/31/09						
PAYROLL NUMBER	Week-Ending Date	PROJECT NAME & ADDRESS DOT 105-296, Route 82								Total ST Hours	BASE HOURLY RATE	TYPE OF FRINGE BENEFITS Per Hour 1 through 6 (see back)	GROSS PAY FOR ALL WORK PERFORMED THIS WEEK	TOTAL DEDUCTIONS				GROSS PAY FOR THIS PREVAILING RATE JOB	CHECK # AND NET PAY	
														FEDERAL	STATE	LIST OTHER				
PERSON/WORKER, ADDRESS and SECTION	APPR RATE %	MALE/FEMALE AND RACE*	WORK CLASSIFICATION	DAY AND DATE							Total O/T Hours	TOTAL FRINGE BENEFIT PLAN CASH		FICA	WITH-HOLDING	WITH-HOLDING	LIST OTHER			
			Trade License Type & Number - OSHA 10 Certification Number	S	M	T	W	TH	F	S										
Robert Craft 81 Maple Street Willimantic, CT 06226		M/C	Electrical Lineman E-1 1234567 Owner OSHA 123456		8	8	8	8	8		40	S-TIME \$ 30.75 Base Rate O-TIME \$ 8.82 Cash Fringe	1. \$ 5.80 2. \$ 3. \$ 2.01 4. \$ 5. \$ 6. \$	\$1,582.80				P-xxxx	\$1,582.80	#123 \$ xxx.xx
Ronald Jones 212 Elm Street Norwich, CT 06360	65%	M/B	Electrical Apprentice OSHA 234567		8	8	8	8	8		40	S-TIME \$ 19.99 Base Rate O-TIME \$ 16.63 Cash Fringe	1. \$ 2. \$ 3. \$ 4. \$ 5. \$ 6. \$	\$1,464.80	xx.xx	xxx.xx	xx.xx	G-xxx	\$1,464.80	#124 \$xxx.xx
Franklin T. Smith 234 Washington Rd. New London, CT 06320 SECTION B		M/H	Project Manager			8					8	S-TIME \$ Base Rate O-TIME \$ Cash Fringe	1. \$ 2. \$ 3. \$ 4. \$ 5. \$ 6. \$	\$1,500.00	xx.xx	xx.xx	xx.xx	M-xx.x		#125 xxx.xx
												S-TIME \$ Base Rate O-TIME \$ Cash Fringe	1. \$ 2. \$ 3. \$ 4. \$ 5. \$ 6. \$							

7/13/2009 *IF REQUIRED
WWS-CP1

*SEE REVERSE SIDE

PAGE NUMBER 1 OF 2

OSHA 10 ~ATTACH CARD TO 1ST CERTIFIED PAYROLL

***FRINGE BENEFITS EXPLANATION (P):**

Bona fide benefits paid to approved plans, funds or programs, except those required by Federal or State Law (unemployment tax, worker's compensation, income taxes, etc.).

Please specify the type of benefits provided:

- 1) Medical or hospital care Blue Cross 4) Disability _____
- 2) Pension or retirement _____ 5) Vacation, holiday _____
- 3) Life Insurance Utopia 6) Other (please specify) _____

CERTIFIED STATEMENT OF COMPLIANCE

For the week ending date of 9/26/09,

I, Robert Craft of XYZ Corporation, (hereafter known as

Employer) in my capacity as Owner (title) do hereby certify and state:

Section A:

1. All persons employed on said project have been paid the full weekly wages earned by them during the week in accordance with Connecticut General Statutes, section 31-53, as amended. Further, I hereby certify and state the following:

- a) The records submitted are true and accurate;
- b) The rate of wages paid to each mechanic, laborer or workman and the amount of payment or contributions paid or payable on behalf of each such employee to any employee welfare fund, as defined in Connecticut General Statutes, section 31-53 (h), are not less than the prevailing rate of wages and the amount of payment or contributions paid or payable on behalf of each such employee to any employee welfare fund, as determined by the Labor Commissioner pursuant to subsection Connecticut General Statutes, section 31-53 (d), and said wages and benefits are not less than those which may also be required by contract;
- c) The Employer has complied with all of the provisions in Connecticut General Statutes, section 31-53 (and Section 31-54 if applicable for state highway construction);
- d) Each such employee of the Employer is covered by a worker's compensation insurance policy for the duration of his employment which proof of coverage has been provided to the contracting agency;
- e) The Employer does not receive kickbacks, which means any money, fee, commission, credit, gift, gratuity, thing of value, or compensation of any kind which is provided directly or indirectly, to any prime contractor, prime contractor employee, subcontractor, or subcontractor employee for the purpose of improperly obtaining or rewarding favorable treatment in connection with a prime contract or in connection with a prime contractor in connection with a subcontractor relating to a prime contractor; and
- f) The Employer is aware that filing a certified payroll which he knows to be false is a class D felony for which the employer may be fined up to five thousand dollars, imprisoned for up to five years or both.

2. OSHA~The employer shall affix a copy of the construction safety course, program or training completion document to the certified payroll required to be submitted to the contracting agency for this project on which such employee's name first appears.

Robert Craft owner 10/2/09
 (Signature) (Title) Submitted on (Date)

Section B: Applies to CONNDOT Projects ONLY

That pursuant to CONNDOT contract requirements for reporting purposes only, all employees listed under Section B who performed work on this project are not covered under the prevailing wage requirements defined in Connecticut General Statutes Section 31-53.

Robert Craft owner 10/2/09
 (Signature) (Title) Submitted on (Date)

Note: CTDOL will assume all hours worked were performed under Section A unless clearly delineated as Section B WWS-CP1 as such. Should an employee perform work under both Section A and Section B, the hours worked and wages paid must be segregated for reporting purposes.

*****THIS IS A PUBLIC DOCUMENT***
 DO NOT INCLUDE SOCIAL SECURITY NUMBERS**

**Connecticut Department of Labor
Wage and Workplace Standards Division
FOOTNOTES**

⇒ Please Note: If the “Benefits” listed on the schedule for the following occupations includes a letter(s) (+ a or + a+b for instance), refer to the information below.

Benefits to be paid at the appropriate prevailing wage rate for the listed occupation.

If the “Benefits” section for the occupation lists only a dollar amount, disregard the information below.

Bricklayers, Cement Masons, Cement Finishers, Concrete Finishers, Stone Masons
(Building Construction) and
(Residential- Hartford, Middlesex, New Haven, New London and Tolland Counties)

- a. Paid Holiday: Employees shall receive 4 hours for Christmas Eve holiday provided the employee works the regularly scheduled day before and after the holiday. Employers may schedule work on Christmas Eve and employees shall receive pay for actual hours worked in addition to holiday pay.

Elevator Constructors: Mechanics

- a. Paid Holidays: New Year’s Day, Memorial Day, Independence Day, Labor Day, Veterans’ Day, Thanksgiving Day, Christmas Day, plus the Friday after Thanksgiving.
- b. Vacation: Employer contributes 8% of basic hourly rate for 5 years or more of service or 6% of basic hourly rate for 6 months to 5 years of service as vacation pay credit.

Glaziers

- a. Paid Holidays: Labor Day and Christmas Day.

Power Equipment Operators
(Heavy and Highway Construction & Building Construction)

- a. Paid Holidays: New Year’s Day, Good Friday, Memorial day, Independence Day, Labor Day, Thanksgiving Day and Christmas Day, provided the employee works 3 days during the week in which the holiday falls, if scheduled, and if scheduled, the working day before and the working day after the holiday. Holidays falling on Saturday may be observed on Saturday, or if the employer so elects, on the preceding Friday.

Ironworkers

- a. Paid Holiday: Labor Day provided employee has been on the payroll for the 5 consecutive work days prior to Labor Day.

Laborers (Tunnel Construction)

- a. Paid Holidays: New Year's Day, Memorial Day, Independence Day, Labor Day, Thanksgiving Day and Christmas Day. No employee shall be eligible for holiday pay when he fails, without cause, to work the regular work day preceding the holiday or the regular work day following the holiday.

Roofers

- a. Paid Holidays: July 4th, Labor Day, and Christmas Day provided the employee is employed 15 days prior to the holiday.

Sprinkler Fitters

- a. Paid Holidays: Memorial Day, July 4th, Labor Day, Thanksgiving Day and Christmas Day, provided the employee has been in the employment of a contractor 20 working days prior to any such paid holiday.

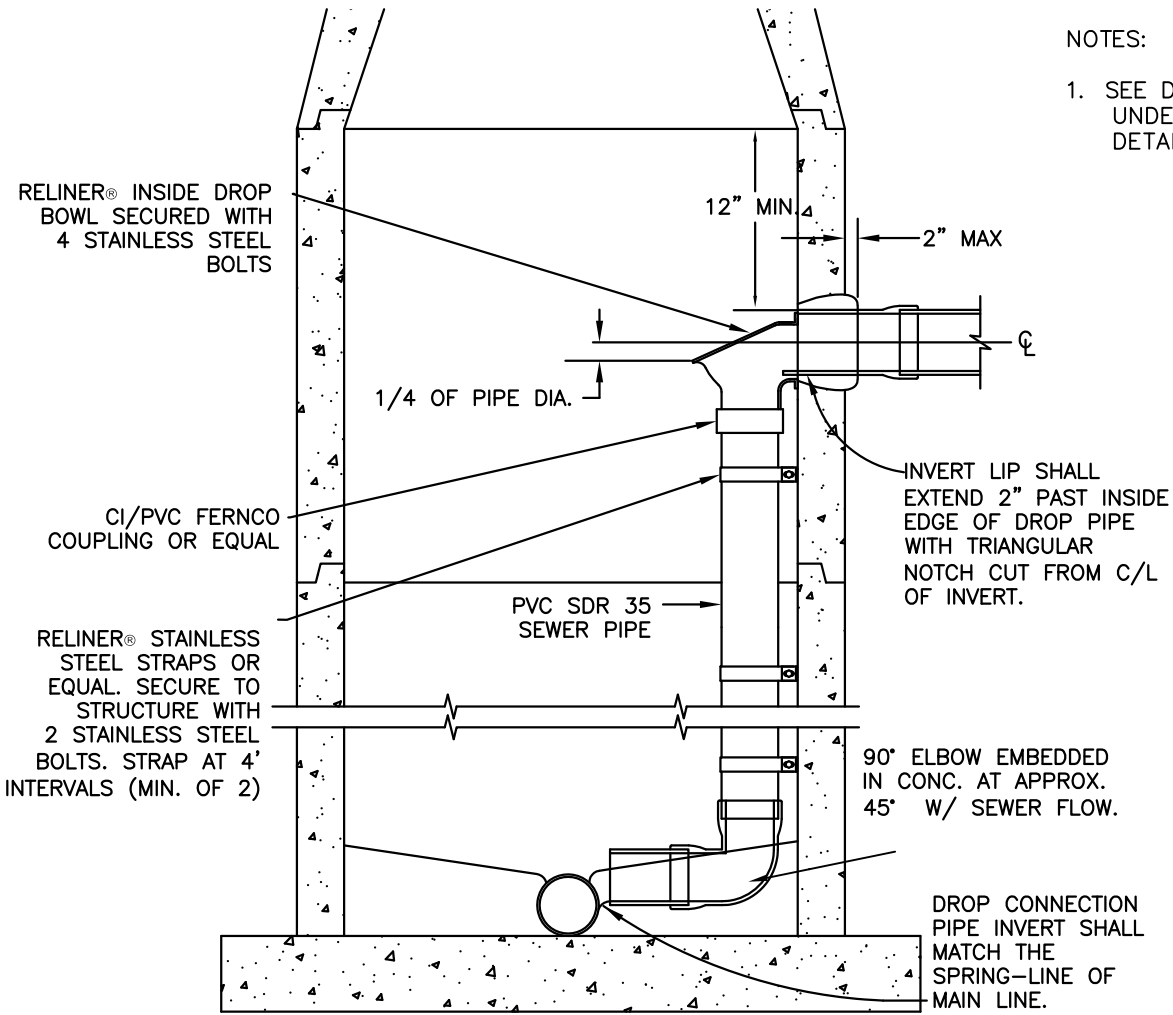
Truck Drivers

(Heavy and Highway Construction & Building Construction)

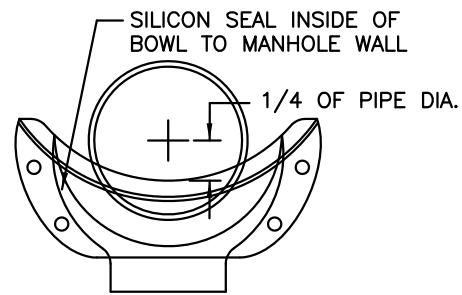
- a. Paid Holidays: New Year's Day, Memorial Day, Independence Day, Labor Day, Thanksgiving Day, Christmas day, and Good Friday, provided the employee has at least 31 calendar days of service and works the last scheduled day before and the first scheduled day after the holiday, unless excused.

ATTACHMENT 2

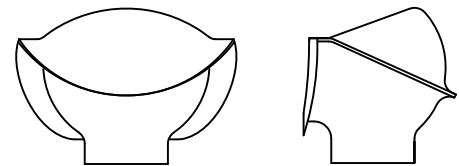
GREATER NEW HAVEN WATER POLLUTION CONTROL AUTHORITY CONSTRUCTION DETAILS



- NOTES:
1. SEE DETAIL NOTES UNDER STANDARD DETAIL SD523-09.



DROP BOWL
MOUNTING POSITION



DROP BOWL
W/ HOOD

REVISIONS	
NO.	DATE
1	JUNE 2008
2	JULY 28, 2014

MANHOLE INSIDE DROP CONNECTION (1)
NTS

GREATER NEW HAVEN WATER POLLUTION CONTROL AUTHORITY CONSTRUCTION DETAILS



NOTES:

1. DETAIL SD523-08 SHALL BE USED ONLY WHERE APPROVED BY GNHWPCA.
2. DROP PIPE AND NECESSARY FITTINGS SHALL BE SCH. 40 PVC OR PVC SDR 35 PIPE.
3. PIPE CONNECTIONS THROUGH EXISTING MH WALLS SHALL BE MADE W/ GROUTING RING (WS WATERSTOP) AS MANUFACTURED BY PRESS-SEAL GASKET CORPORATION OR APPROVED EQUAL AND NON-SHRINK GROUT.
4. ALL MH CONNECTIONS SHALL BE CORED WITH A CONCRETE CORING MACHINE.
5. MH INVERT SHALL BE: FORMED OUT OF MH BRICK. SHELF TO BE BUILT TO 0.8 OF THE DIAMETER OF PIPE EXITING THE MH.
6. ALL INSIDE DROP CONNECTIONS FOR SERVICES AND COLLECTOR SEWERS SHALL USE THE "DROP BOWL" MANUFACTURED BY RELINER-DURAN, INC. OR APPROVED EQUAL.
7. DROP BOWL MODEL "A-4" SHALL BE USED FOR ALL LINES UP THROUGH FULL 6" INLETS. DROP BOWL MODEL "A-6" SHALL BE USED FOR ALL 8" INLETS. DROP BOWL MODEL "B-8" SHALL BE USED FOR ALL 10" INLETS.
8. THE FORCE LINE HOOD SHALL BE ATTACHED ON MODELS "A-4" & "A-6" WHEN THE INCOMING LINE IS A FORCE MAIN OR THE SLOPE OF A GRAVITY LINE IS 5% OR GREATER.
9. SECURE DROP PIPE TO MANHOLE WALL WITH RELINER-DURAN, INC STAINLESS STEEL ADJUSTABLE CLAMPING BRACKETS OR EQUAL.
10. ATTACH THE DROP BOWL & EACH CLAMPING BRACKET TO THE MANHOLE WALL WITH 3/8" X 3 3/4" RAMSET/RED HEAD BOLTS HELD IN PLACE WITH 2 STAGE EPOXY PASTE. EPOXY PASTE SHALL BE A TWO COMPONENT, 100% SOLID SYSTEM. SIKADUR 31 HI-MOD GEL BY SIKA CORPORATION OR EQUAL.

REVISIONS	
NO.	DATE
1	JUNE 2008

MANHOLE INSIDE DROP CONNECTION (2)

NTS