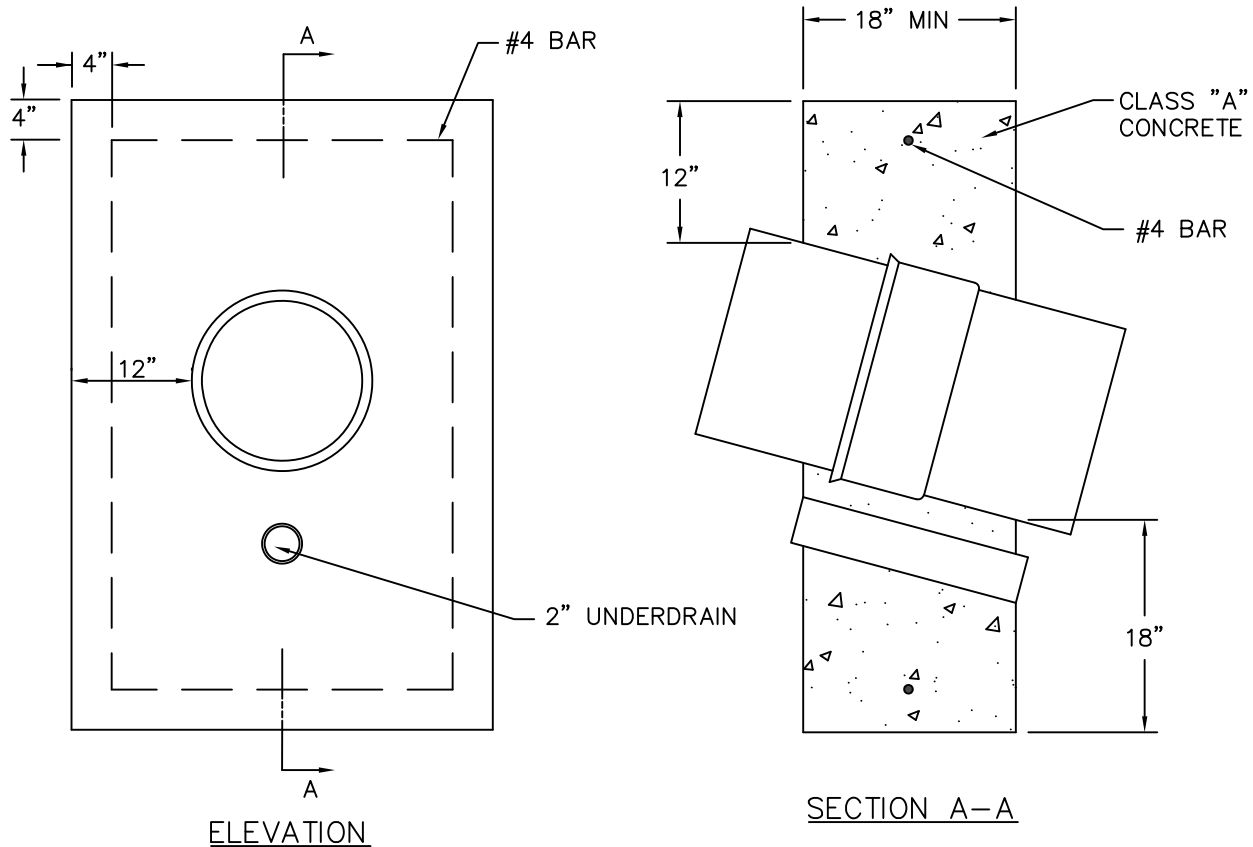


GREATER NEW HAVEN WATER POLLUTION CONTROL AUTHORITY CONSTRUCTION DETAILS



NOTE:

1. ANCHORS SHALL BE PLACED AT JOINTS
2. SEWERS ON 20 PERCENT SLOPES OR GREATER SHALL BE ANCHORED SECURELY WITH CONCRETE ANCHORS SPACED AS FOLLOWS:
 - NOT GREATER THAN 36 FEET CENTER TO CENTER ON GRADES 21% TO 35%;
 - NOT GREATER THAN 24 FEET CENTER TO CENTER ON GRADES 35% TO 50%;
 - NOT GREATER THAN 16 FEET CENTER TO CENTER ON GRADES 50% AND OVER.

CONCRETE ANCHORS FOR STEEPLY SLOPED PIPES

NTS

REVISIONS	
NO.	DATE
2	JANUARY, 2020