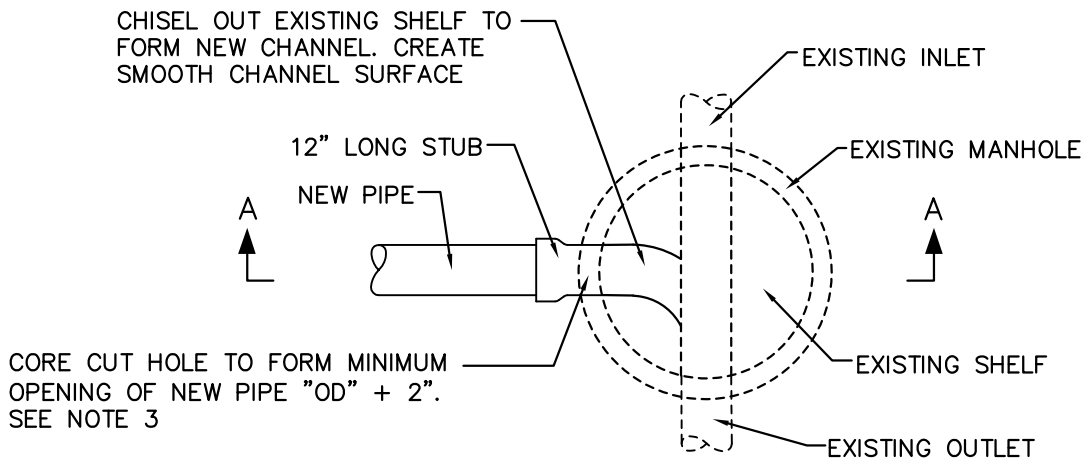
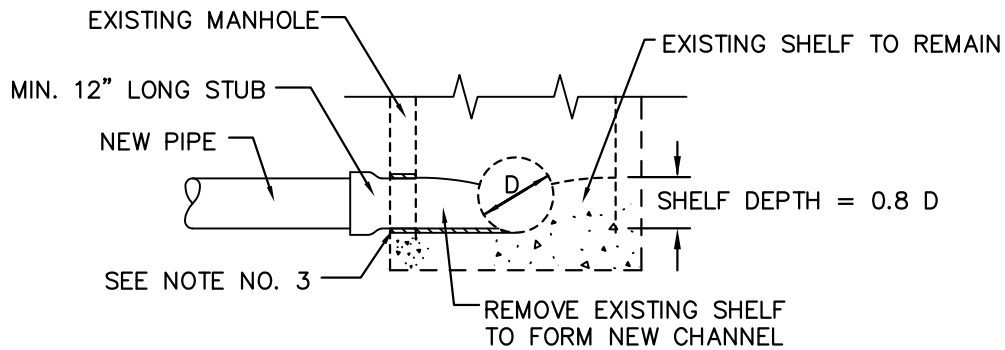


# GREATER NEW HAVEN WATER POLLUTION CONTROL AUTHORITY CONSTRUCTION DETAILS



PLAN



SECTION A-A

NOTES:

1. INVERT ELEVATION OF 12" LONG STUB AT THE INSIDE FACE OF MANHOLE TO BE 1 1/4" (MIN.) HIGHER THAN EXISTING OUTLET INVERT ELEVATION.
2. THE CORE CUT HOLE SHALL BE MADE WITH EQUIPMENT SPECIALLY DESIGNED TO CORE A SMOOTH HOLE WITHOUT SPALLING OR DAMAGE TO THE SHELL OR STRUCTURE.
3. PIPE CONNECTIONS THROUGH MH WALLS SHALL BE MADE W/ GROUTING RING (WS WATERSTOP) AS MANUFACTURED BY PRESS-SEAL GASKET CORPORATION OR APPROVED EQUAL AND NON-SHRINK GROUT.
4. MH INVERT SHALL BE FORMED OUT OF MH BRICK. SHELF TO BE BUILT TO 0.8 OF THE DIAMETER OF PIPE EXITING THE MH.

## CONNECTION TO EXISTING MANHOLE NTS

REVISIONS	
NO.	DATE
4	JANUARY, 2020