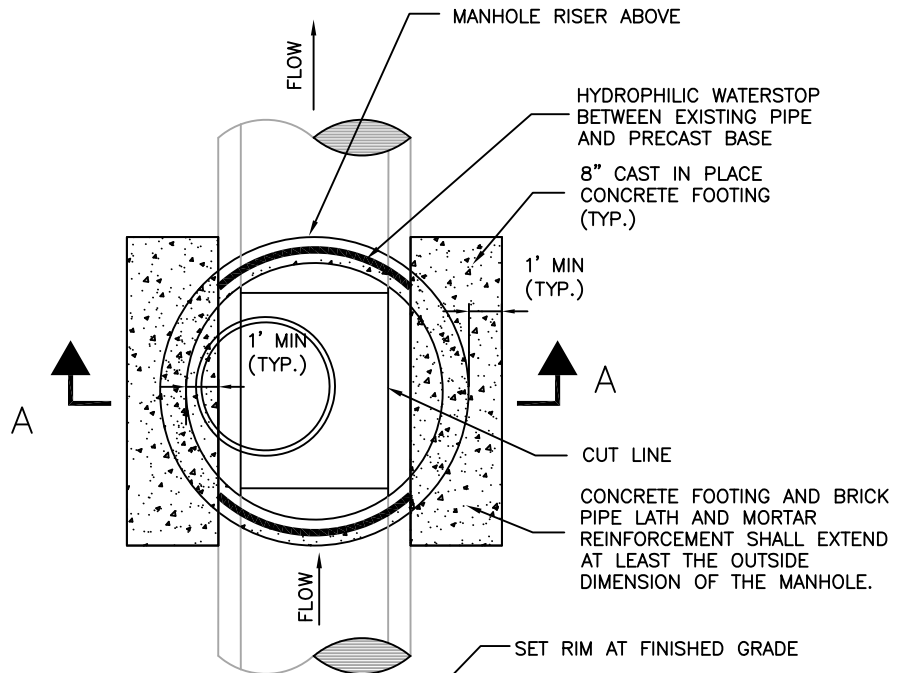


# GREATER NEW HAVEN WATER POLLUTION CONTROL AUTHORITY CONSTRUCTION DETAILS



**DOGHOUSE MANHOLE OVER BRICK SEWER MAIN  
CONSTRUCTION SEQUENCE NOTES:**

1. CONFIRM DRY WEATHER PATTERN FOR DURATION OF MANHOLE CONSTRUCTION.
2. EXCAVATE AND EXPOSE TOP OF PIPE AND SHORE EXCAVATION.
3. HAND DIG ALONG SIDES TO VERIFY WITH AND SECURE EXCAVATION.
4. EXCAVATE NO DEEPER THAN SPRING LINE OF BRICK SEWER PIPE.
5. INSTALL STONE BASE AND CONSOLIDATE.
6. PLACE AND CURE CONCRETE FOOTING.
7. CLEAN BRICK SEWER PIPE AND COVER WITH LATH. APPLY LATEX BONDING AGENT TO BRICK AND COAT WITH 1/2" THICK MORTAR.
8. INSTALL MANHOLE BASE AND SEAL AROUND SEWER.
9. PLACE CONCRETE FILL AROUND OUTSIDE AND INSIDE BASE TO BELOW BRICK SHELF.
10. CUT OPENING IN BRICK SEWER WITH DIAMOND SAW WITHOUT DROPPING BRICKS INTO SEWER.
11. INSTALL BRICK SHELF.
12. COMPLETE MANHOLE INSTALL. SEE SD523-01 FOR REMAINDER MH DETAILS



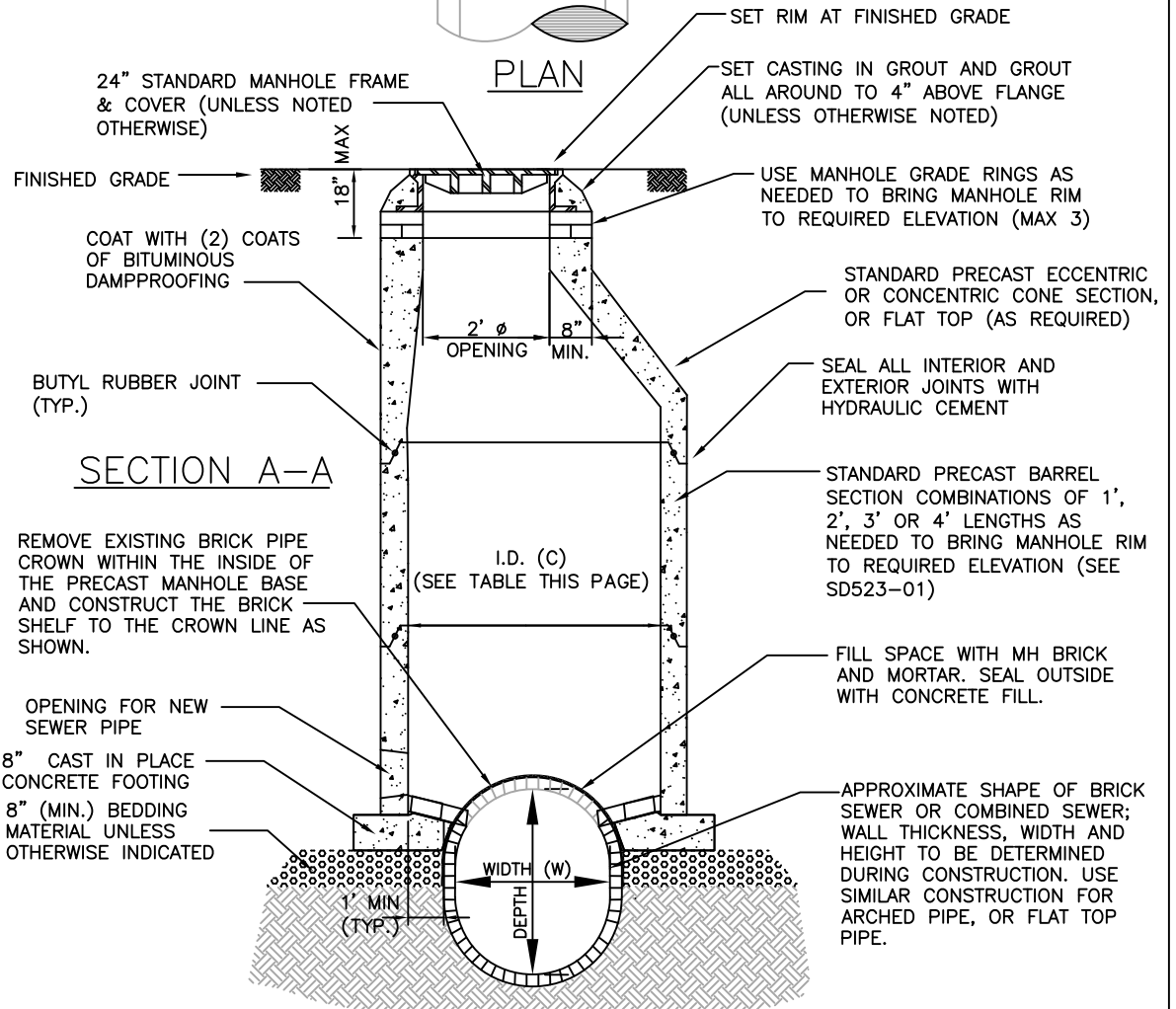
**PRECAST BASE INSIDE  
DIMENSION TABLE**

WIDTH (W)	I.D. (C)
8" TO 24"	4' $\phi$
27" TO 36"	5' $\phi$
48" TO 66"	6' $\phi$
66" TO 72"	8' $\phi$
> 72"	10' $\phi$

I.D. = INSIDE DIMENSION

**NOTES:**

1. OPENINGS IN PRECAST BASE SHALL BE MANUFACTURED TO ACCOMMODATE DIMENSIONS OF EXISTING PIPE. REFER TO PRECAST BASE INSIDE DIMENSION TABLE FOR WIDTH REQUIREMENTS.



REVISIONS	
NO.	DATE

## DOGHOUSE MANHOLE OVER BRICK SEWER MAIN

NTS

SD523-14