

# CONSTRUCTION NOTIFICATION

## WORK IN YOUR NEIGHBORHOOD



---

## PROJECT SSR 2021-01: LOWER MILL RIVER TRUNK SEWER CURED IN PLACE PIPE LINING – PHASE 1

---

PROJECT AREA: HAMDEN – ALONG LAKE WHITNEY FROM INTERSECTION OF WAITE ST AND WHITNEY AVE TO ARMORY ST AND WHITNEY AVE

### PROJECT OVERVIEW

This Project will rehabilitate the portion of the Mill River Trunk Sewer which extends from the intersection of Whitney Ave and Waite Street south along Lake Whitney to about the intersection of Whitney Ave and Armory Street. This 2,734-foot-long section of 42” diameter concrete pipe will be rehabilitated using a Cured in Place Pipe (CIPP) lining technology. Sewer bypass work will be required and access to the sewer manholes will be difficult since most of the pipe is located in wooded easements. This Project is Phase 1 of a three-phase approach to rehabilitate a total of approximately 7,600 linear feet of the Mill River Trunk Sewer.

### BENEFITS

- Rehabilitates aging infrastructure.
- Allows for increased sewer flow capacity.
- Further protects the areas tributary to the Mill River.

### IMPACTS

- Some traffic and hiking impacts are expected.
- Signs and fencing will be erected to maintain safety.
- Notices will be handed to nearby residents providing additional information/guidance on how to prevent potential sewer and styrene odors from potentially back drafting into homes.

### TIMING AND COORDINATION

**Construction Start:** Monday, October 25, 2021

**Duration:** The entire project is expected to take approximately 1 month.

**Schedule:** Mon-Fri from 7 am to 7 pm

*\*Due to dynamics of construction schedule, weather and other factors, dates and times are subject to change.*

### FOR MORE INFORMATION

Contact the Engineering Department at: 203-466-5280

[engineering@gnhwpc.com](mailto:engineering@gnhwpc.com)

or, visit the GNHWPCA website at [www.gnhwpc.com](http://www.gnhwpc.com)

Sewer Emergencies (24/7) Call: 203-466-5260

---

GNHWPCA | 260 East Street | New Haven, CT 06511 | 203-466-5280 | [www.gnhwpc.com](http://www.gnhwpc.com)

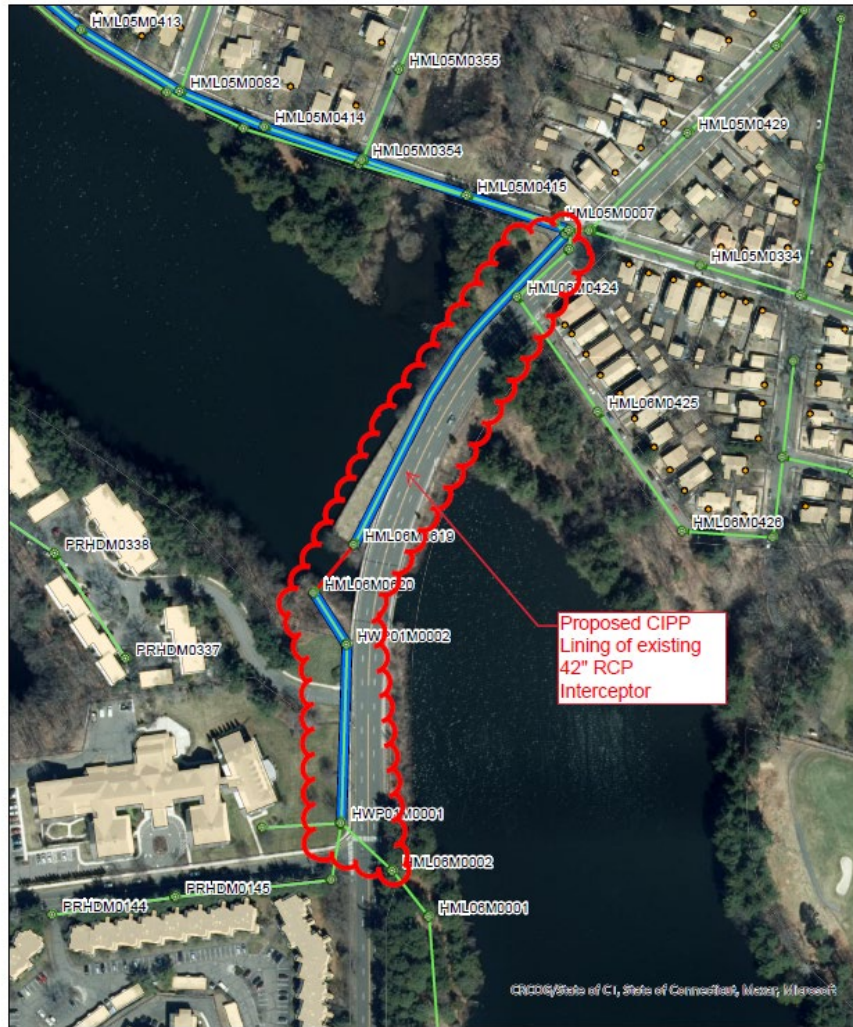
---

*“To protect the environment, to serve the public and to maintain a reputation for quality and value”*

SSR 2021-01: LOWER MILL RIVER TRUCK SEWER CURED IN PLACE PIPE LINING – PHASE 1  
PROJECT LOCATIONS



SSR 2021-01: LOWER MILL RIVER TRUCK SEWER CURED IN PLACE PIPE LINING – PHASE 1  
PROJECT LOCATIONS



SSR 2021-01  
LOWER MILL RIVER INTERCEPTOR REHABILITATION PHASE 1.1



1:2,259